

Sulfur-bearing species in molecular clouds

Bilalbegović, Goranka; Baranović, Goran

Source / Izvornik: **Monthly Notices of the Royal Astronomical Society, 2015, 446, 3118 - 3129**

Journal article, Published version

Rad u časopisu, Objavljena verzija rada (izdavačev PDF)

<https://doi.org/10.1093/mnras/stu2313>

Permanent link / Trajna poveznica: <https://um.nsk.hr/um:nbn:hr:217:037214>

Rights / Prava: [In copyright](#) / [Zaštićeno autorskim pravom.](#)

Download date / Datum preuzimanja: **2024-12-19**



Repository / Repozitorij:

[Repository of the Faculty of Science - University of Zagreb](#)



Sulphur-bearing species in molecular clouds

G. Bilalbegović¹★ and G. Baranović²

¹*Department of Physics, Faculty of Science, University of Zagreb, Bijenička 32, 10000 Zagreb, Croatia*

²*Rudjer Bošković Institute, Division of Organic Chemistry and Biochemistry, Bijenička 54, 10000 Zagreb, Croatia*

Accepted 2014 October 28. Received 2014 October 27; in original form 2014 June 29

ABSTRACT

We study several molecules that could help in the solution of the missing sulphur problem in dense clouds and circumstellar regions, as well as in the clarification of the sulphur chemistry in comets. These sulphur molecules are the trimer $(\text{CH}_2\text{S})_3$ and the tetramer $(\text{CH}_2\text{S})_4$ of thioformaldehyde, pentathian S_5CH_2 , hexathiepan S_6CH_2 , thiirane $\text{C}_2\text{H}_4\text{S}$, trisulfane HSSSH , and thioacetone $(\text{CH}_3)_2\text{CS}$. Infrared spectra of these species are calculated using the density functional theory methods. The majority of calculated bands belong to the mid-infrared, with some of them occurring in the near- and far-infrared region. We suggest that some of unidentified spectral features measured by *Infrared Space Observatory* in several active galactic nuclei and starburst galaxies could be caused by 1,3,5-trithiane $((\text{CH}_2\text{S})_3)$, 1,3,5,7-tetrathiocane $((\text{CH}_2\text{S})_4)$, and thiirane ($\text{C}_2\text{H}_4\text{S}$). The objects whose unidentified infrared features we compare with calculated bands are NGC 253, M82, NGC 1068, Circinus, Arp 220, 30 Doradus, Orion KL, and Sgr B2.

Key words: line: identification – molecular data – methods: data analysis – methods: numerical – ISM: molecules – galaxies: ISM.

1 INTRODUCTION

More than 180 molecules have been discovered in space (Tielens 2013). With an exception of fullerenes, the largest molecule confirmed to exist in space till now consist of 13 atoms (Bell et al. 1997). Several sulphur-bearing molecules and ions have been observed in the interstellar medium and circumstellar shells in the Milky Way, as well as in other galaxies. The ethyl mercaptan, $\text{CH}_3\text{CH}_2\text{SH}$, the largest astrophysical molecule containing sulphur, was recently observed in Orion (Kolesnikova et al. 2014). Interstellar methyl mercaptan, CH_3SH , was discovered long time ago by measuring lines in the millimetre range of the spectrum towards the Sgr B2 (Linke, Frerking & Thaddeus 1979). Methyl mercaptan was also detected in other environments, for example in the organic-rich hot core G327.3-0.6 (Gibb et al. 2000), and in Orion (Kolesnikova et al. 2014). It was suggested that methyl mercaptan forms in interstellar ices and then evaporates in hot cores (Gibb et al. 2000).

Although the first interstellar sulphur-bearing molecule CS was detected a long time ago (Penzias et al. 1971), the chemistry of interstellar sulphur is still undetermined. The observed abundance of sulphur-bearing species in dense clouds is only about 0.1 per cent of the same quantity in diffuse clouds (Tieftrunk et al. 1994; Charnley 1997). Therefore, the main sulphur species in dense regions of interstellar medium are still unknown. Molecules OCS (Palumbo, Geballe & Tielens 1997) and SO_2 (Zasowski et al. 2009) were

detected in interstellar ices, but their abundances are not sufficient to account for the missing sulphur. Various species have been suggested as a possible reservoir of sulphur, for example polysulphanes H_2S_n , sulphur polymers S_n , solid H_2SO_4 , and FeS (Keller et al. 2002; Scappini et al. 2003; Druard & Wakelam 2012). The presence of S^+ and its efficient sticking to dust grains has also been proposed (Ruffle et al. 1999), as well as the existence of a substantial amount of atomic sulphur in shocked gases (Anderson et al. 2013).

Sulphur species have also been observed in comets (Festou, Uwe Keller & Weaver 2004). A cometary ice of the Hale–Bopp (C/1995 O1) had a similar IR (infrared) spectrum as interstellar ices in dense clouds (Crovisier et al. 1997; Bockelée-Morvan et al. 2000). Molecules H_2S , CS, OCS, H_2CS , and SO were observed in the comet Hale–Bopp using radio telescopes (Biver et al. 1997; Woodney et al. 1997). The low abundance of H_2CS in comparison to H_2S , as well as large daily variations in profiles and intensities of lines for H_2S and CS were found (Woodney et al. 1997). Therefore, an intensive sulphur chemistry was in progress when the comet Hale–Bopp was observed from Earth.

Models of interstellar ices containing H_2S , SO_2 , CO, CO_2 , CH_3OH , H_2O , and/or NH_3 were studied in laboratories on Earth by protons irradiation (Ferrante et al. 2008; Garozzo et al. 2010), under UV (Jiménez-Escobar & Muñoz Caro 2011; Jiménez-Escobar, Muñoz Caro & Chen 2014), and soft X-rays (Jiménez-Escobar et al. 2012). The effects of irradiation and of thermal processing were explored by measuring IR and mass spectra. It was found that the amount of H_2S , SO_2 , and CO decreased and new molecules

★E-mail: goranka.bilalbegovic@gmail.com

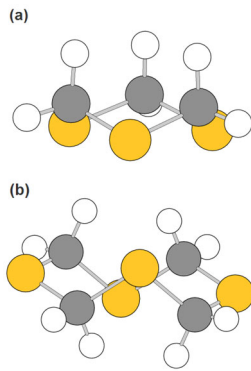


Figure 1. The optimized structures: (a) $(\text{CH}_2\text{S})_3$ (thioformaldehyde trimer, 1,3,5-trithiane), (b) $(\text{CH}_2\text{S})_4$ (thioformaldehyde tetramer, 1,3,5,7-tetrathiane). Small white balls represent hydrogen atoms, light grey (yellow in the colour figure) are for sulphur atoms, and dark grey for carbon atoms.

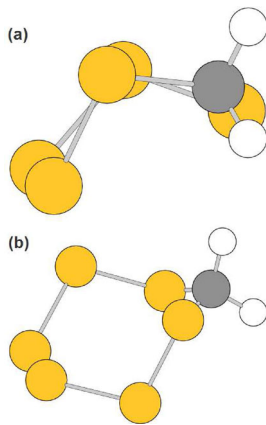


Figure 2. The optimized structures: (a) S_5CH_2 (pentathian), (b) S_6CH_2 (hexathiepan). Details as in Fig. 1.

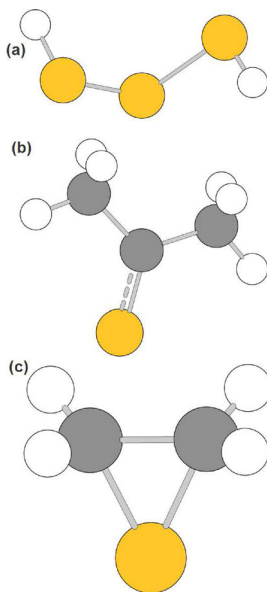


Figure 3. The optimized structures: (a) *trans*-HSSSH, (b) $(\text{CH}_3)_2\text{CS}$ (thioacetone), (c) $\text{C}_2\text{H}_4\text{S}$ (thiirane). A double C–S bond in $(\text{CH}_3)_2\text{CS}$ is shown. Details as in Fig. 1.

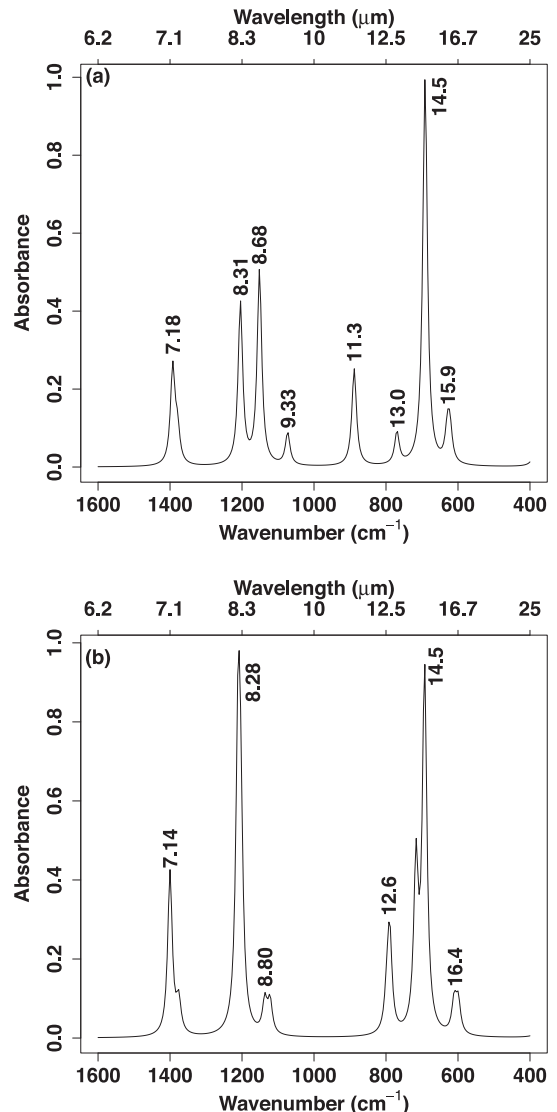


Figure 4. IR spectrum: (a) $(\text{CH}_2\text{S})_3$, (b) $(\text{CH}_2\text{S})_4$. Positions at the peaks are in μm .

appeared. Depending on the initial ice composition, the radiation dose, and the temperature, some of detected molecules were: OCS , SO_3 , O_3 , H_2S_2 , HS_2 , CS_2 , H_2CO , CH_4 , CO_2 , S_n , $n=2-8$. A sulphur rich residuum without IR bands also formed when the ice containing H_2S was irradiated by protons (Garozzo et al. 2010).

The thioformaldehyde molecule, H_2CS , in our Galaxy was detected by measuring a higher transition $2_{11} \leftarrow 2_{12}$ at 3139.4 MHz, in the direction of Sgr B2 (Sinclair et al. 1973). H_2CS was observed in cold and hot cores, outflows of stars, and in the interstellar medium (Maeda et al. 2008). Thioformaldehyde was also observed in other galaxies (Heikkila, Johansson & Olofsson 1999; Martin et al. 2005). The H_2CS molecule is unstable under laboratory conditions on Earth (Peach, Weissflog & Pelz 1975). It is prone to polymerization and, as possible products, various cyclic molecules might occur. Among simplest ones are $(\text{CH}_2\text{S})_3$ (1,3,5-trithiane) and $(\text{CH}_2\text{S})_4$ (1,3,5,7-tetrathiane). Properties of higher polymeric thioformaldehydes, $(\text{CH}_2\text{S})_n$, have also been studied on Earth (Credali & Russo 1967; Peach et al. 1975). The cyclic structures, $(\text{CH}_2\text{S})_n$, are stable. Thus, they appear as a possible reservoir

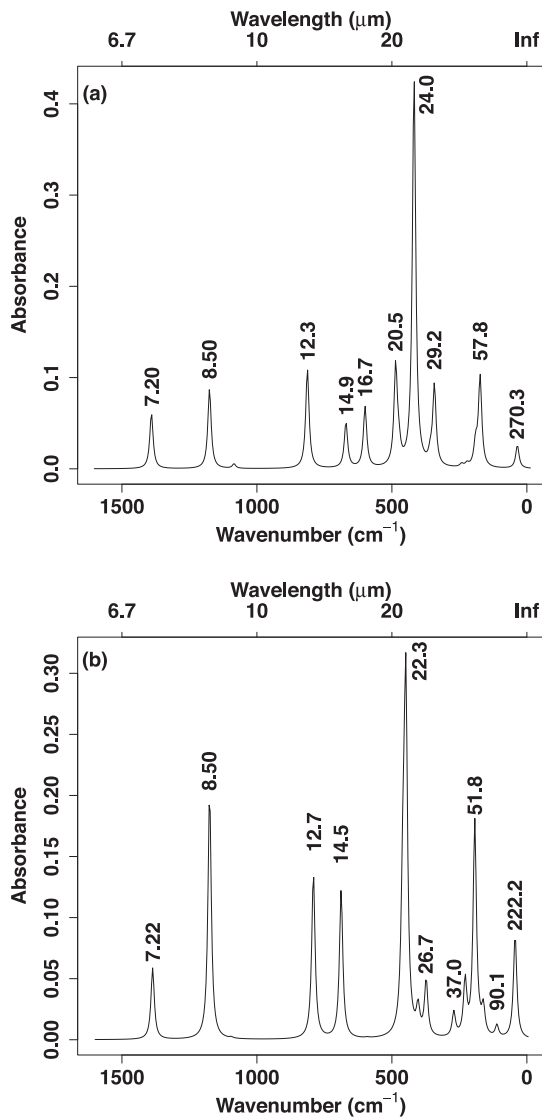


Figure 5. IR spectrum of: (a) S₅CH₂, (b) S₆CH₂. Positions at the peaks are in μm.

of sulphur in space. In laboratories (CH₂S)₃ forms when formaldehyde and hydrogen sulphide react. Various routes and catalysts for this reaction have been found. One way to form (CH₂S)₃ is the reaction between H₂CO and H₂S under irradiation (Credali & Russo 1967). Both H₂CO and H₂S have been discovered in our and other galaxies (Snyder et al. 1969; Thaddeus et al. 1972; Gardner & Whiteoak 1974; Heikkilä et al. 1999). It was proposed that formaldehyde forms in interstellar ices by hydrogenation of CO (Tielens & Whittet 1997; Watanabe & Kouchi 2002). The observed abundances of H₂S are such that it has been assumed that this molecule also forms in interstellar ices on dust grains (Charnley 1997; Buckle & Fuller 2003). We expect that, as in chemical laboratories on Earth, formaldehyde and hydrogen sulphide react in space under irradiation (such as UV, X-, or cosmic rays), and that (CH₂S)₃ and higher polymeric thioformaldehydes are present. Formaldehyde and hydrogen sulphide (Biver et al. 1997), as well as thioformaldehyde (Woodney et al. 1997), were also detected in the Hale–Bopp. In addition, several other sulphur-bearing species and changes of intensities for H₂S during observations were detected in this comet.

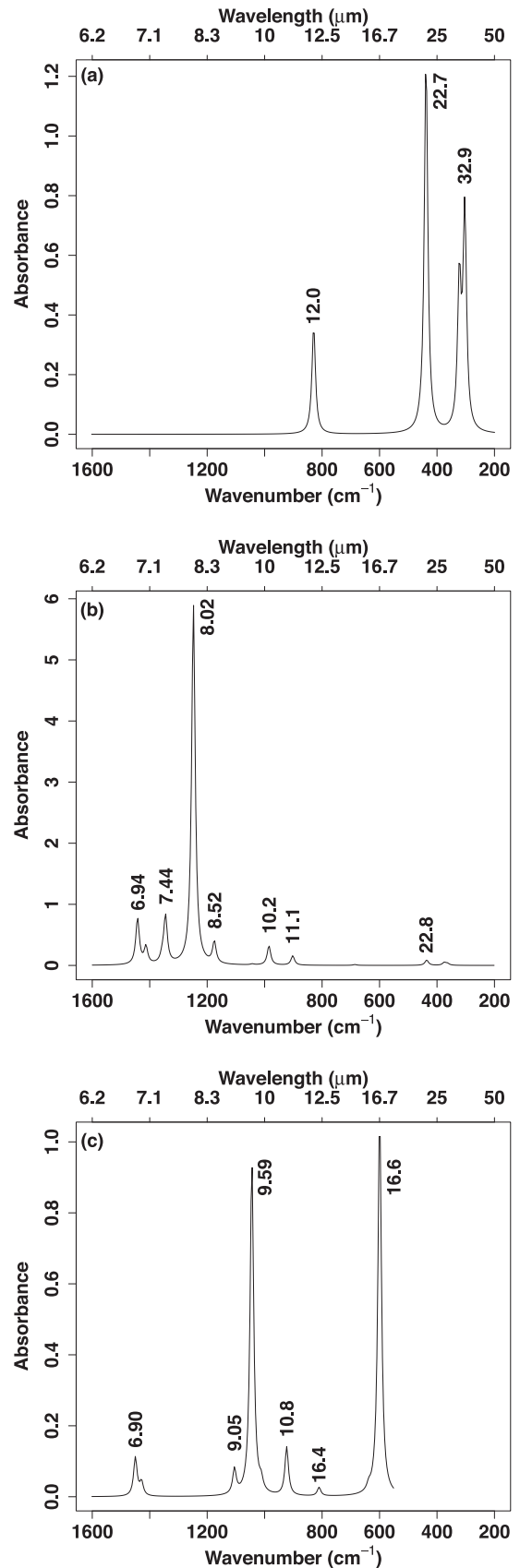


Figure 6. IR spectrum of: (a) *trans*-HSSSH, (b) (CH₃)₂CS, (c) C₂H₄S. Positions at the peaks are in μm.

Table 1. Calculated (scaled by 0.9687) and measured ^a(Klaboe 1969; Ellestad et al. 1972) vibrational fundamentals for 1,3,5 trithiane, (CH₂S)₃. After IR measurements in vapour ^a(Klaboe 1969; Ellestad et al. 1972), we labelled relative intensities of experimental bands with s (strong), m (medium), w (weak), and v (very). Three IR inactive A₂ modes (from 8 to 10) are omitted.

Mode	Calculated				Measured ^a			
	Symm.	$\tilde{\nu}$ (cm ⁻¹)	λ (μ m)	IR int. (km mol ⁻¹)	Rel. int.	$\tilde{\nu}$ (cm ⁻¹)	λ (μ m)	Rel. int.
1	A ₁	3027.2	3.30	1.08	3	–	–	–
2		2947.9	3.39	31.03	99	2900	3.45	vs
3		1392.5	7.18	8.95	28	1378	7.26	s
4		888.4	11.26	9.77	31	898	11.14	s
5		622.4	16.07	2.19	7	655	15.27	s
6		381.2	26.23	0.02	0	398	25.13	vw
7		274.8	36.39	1.56	5	308	32.47	m
11	E	3028.7	3.30	0.02	0	2980	3.36	s
12		2953.4	3.39	3.95	13	–	–	–
13		1379.4	7.25	2.85	9	1394	7.17	vs
14		1204.5	8.30	13.31	42	1211	8.26	vs
15		1151.7	8.68	13.84	44	1162	8.61	vs
16		769.6	13.00	0.04	0	802	12.47	w
17		691.3	14.46	31.48	100	728	13.74	vs
18		629.2	15.89	3.01	10	655	15.27	s
19		268.3	37.27	1.60	5	280	35.71	m
20		169.4	59.03	0.00	0	–	–	–

Table 2. Calculated (scaled by 0.9687) and measured ^a(Nash, Kenneth Musker & Lam 1988) vibrational A_u fundamentals for 1,3,5,7-tetrathioecane, (CH₂S)₄. 21 IR inactive A_g modes are omitted. Details for relative intensities of measured bands as in Table 1.

Mode	Calculated				Measured ^a			
	Symm.	$\tilde{\nu}$ (cm ⁻¹)	λ (μ m)	IR int. (km mol ⁻¹)	Rel. int.	$\tilde{\nu}$ (cm ⁻¹)	λ (μ m)	Rel. int.
1	A _u	3035.9	3.29	3.92	6	–	–	–
2		3031.5	3.30	2.72	4	–	–	–
3		2980.7	3.35	7.17	11	–	–	–
4		2978.1	3.36	14.39	23	–	–	–
5		1400.1	7.14	26.34	42	1397	7.16	s
6		1376.0	7.27	5.51	9	1360	7.35	m
7		1210.7	8.26	49.84	79	1212	8.25	m
8		1203.7	8.31	29.81	47	1207	8.29	s
9		1136.6	8.80	6.93	11	1137	8.80	vw
10		1122.2	8.91	6.89	11	–	–	–
11		797.4	12.54	2.22	4	804	12.44	m
12		789.7	12.66	19.86	31	750	13.33	vs
13		716.6	13.96	28.23	45	732	13.66	vs
14		692.8	14.43	63.27	100	715	13.99	m
15		610.6	16.38	8.40	13	631	15.85	w
16		599.4	16.69	7.67	12	614	16.29	vw
17		365.3	27.37	0.61	1	–	–	–
18		278.5	35.91	7.56	12	–	–	–
19		195.2	51.23	1.65	3	–	–	–
20		128.1	78.07	3.55	6	–	–	–
21		31.1	321.71	4.21	7	–	–	–

It is possible to suggest that formaldehyde and hydrogen sulphide react in the Hale–Bopp (and perhaps in some other comets) and form cyclic thioformaldehydes.

Cyclic molecules pentathian (S₅CH₂) and hexathiepan (S₆CH₂) were detected in laboratory astrophysics experiments on interstellar ices after the UV irradiation at $T = 12$ K, which was followed by heating to room temperature (Muñoz Caro 2002). Mass spectra were measured and, among pentathian, hexathiepan, and some known molecules, several unidentified species were found. This opens a possibility that (CH₂S)₃, (CH₂S)₄, and other sulphur-bearing species were also present, or could form under suitable

conditions. Disulphane, H₂S₂, was also detected in laboratory experiments on interstellar ices (Ferrante et al. 2008; Garozzo et al. 2010; Jiménez-Escobar & Muñoz Caro 2011; Jiménez-Escobar et al. 2012, 2014). The presence of polysulphanes, H₂S_n, was suggested (Druard & Wakelam 2012). The results of calculations on chemical networks predicted that H₂S₃ is more abundant than H₂S₂ in less dense clouds at $T = 20$ K (Druard & Wakelam 2012). Therefore, H₂S₃ is an important molecule for further studies of sulphur species in molecular clouds. We investigate the most stable conformation *trans*-HSSSH (Liedtke et al. 1993). Thioacetone, (CH₃)₂CS, in the form we study, consists of the two methyl groups and the sulphur

Table 3. Calculated (scaled by 0.9687) vibrational fundamentals bands for pentathian, S₅CH₂.

Mode	$\tilde{\nu}$ (cm ⁻¹)	λ (μm)	IR int. (km mol ⁻¹)	Rel. int.
1	3024.4	3.31	0.39	4
2	2960.1	3.38	8.75	86
3	1390.7	7.19	1.43	14
4	1175.6	8.51	2.06	20
5	1084.8	9.22	0.12	1
6	813.0	12.30	2.58	25
7	670.2	14.92	1.18	12
8	599.4	16.68	1.57	16
9	486.0	20.58	2.57	25
10	474.4	21.08	0.43	4
11	417.9	23.93	10.13	100
12	357.6	27.96	0.26	3
13	342.5	29.19	2.07	20
14	241.5	41.41	0.08	1
15	222.0	45.05	0.09	1
16	189.9	52.65	0.58	6
17	173.2	57.72	2.35	23
18	35.2	284.29	0.60	6

Table 4. Calculated (scaled by 0.9687) vibrational fundamentals bands for hexathiepan, S₆CH₂.

Mode	$\tilde{\nu}$ (cm ⁻¹)	λ (μm)	IR int. (km mol ⁻¹)	Rel. int.
1	3006.8	3.33	2.29	36
2	2951.7	3.39	2.37	37
3	1386.2	7.21	1.38	22
4	1175.2	8.51	4.78	75
5	1094.9	9.13	0.02	0
6	790.8	12.65	3.21	50
7	688.0	14.53	2.87	45
8	591.3	16.91	0.01	0
9	460.5	21.71	1.46	23
10	456.6	21.90	1.44	23
11	448.3	22.31	6.41	100
12	403.0	24.81	0.52	8
13	373.0	26.81	1.08	17
14	347.3	28.79	0.00	0
15	270.6	36.96	0.47	7
16	228.7	43.73	1.07	17
17	193.0	51.81	4.17	65
18	174.8	57.21	0.07	1
19	161.3	62.01	0.53	8
20	111.0	90.07	0.23	4
21	43.5	229.67	2.03	32

atom doubly bonded to carbon that could give rise to specific IR spectral features. Thioacetone could exist as the thioketo and thienol tautomers, but thioenol transforms to the thioketo form (Lipscomb & Sharkey 1970). We study the thioketo tautomer that is prone to polymerization, and therefore unstable. However, its lifetime is several minutes (Kroto et al. 1974). Thiirane (C₂H₄S, ethylene sulphide) is the smallest cyclic molecule containing sulphur. Its oxygen analogue oxirane (C₂H₄O) is already confirmed as an astrophysical molecule (Dickens et al. 1997; Puzzarini et al. 2014).

Most sulphur-bearing and other astrophysical molecules have been detected by radio telescopes involving rotational spectra. For some of molecules studied here by calculating their IR spectra, rotational spectra and constants are available: (CH₂S)₃ (Cervellati, Corbelli & Lister 1984; Dorofeeva & Gurvich 1995; Antolinez et al.

2002), trans-HSSSH (Liedtke et al. 1993, 1997), (CH₃)₂CS (Kroto et al. 1974), C₂H₄S (Hirose, Okiye & Maeda 1976; Kirchner et al. 1997; Hirao, Okabayashi & Tanimoto 2001).

In this work, to shed light on the missing reservoirs of sulphur in dense interstellar clouds, we study several sulphur-bearing species. This study is also important for understanding of the sulphur chemistry in comets. IR spectra of sulphur molecules are calculated using density functional theory methods (Becke 2014). In Section 2, we describe computational methods. In Section 3.1, we present the calculated properties of molecules and their IR spectra. We compare calculated bands with observed spectra of astrophysical objects and find good agreement between some calculated bands and unidentified features observed by *Infrared Space Observatory* (ISO) in several starburst and active galaxies (Fischer et al. 1999; Lutz et al. 2000; Sturm et al. 2000; ISO 2002). Therefore, in Section 3.2 we present the list of already detected sulphur-bearing species in molecular gases of these galaxies and briefly describe conditions for their formation. In Section 3.3, we list detected sulphur-bearing species in environments of our Galaxy: Orion KL and Sgr B2. The conclusions are summarized in Section 4.

2 COMPUTATIONAL METHODS

We use density functional theory methods within the GAUSSIAN code (Frisch et al. 2013) to study several sulphur-bearing molecules. The hybrid B3LYP functional (Becke 1993; Stephens et al. 1994) and the augmented correlation consistent aug-cc-pVTZ basis set (Woon & Dunning 1993) are applied. It was found that this basis set and the B3LYP functional produced accurate IR intensities (Zvereva, Shagidullin & Katsyuba 2011). Using these methods we compute harmonic vibrational frequencies.

The GAUSSIAN code and B3LYP functional have been successfully applied for studies of IR spectra of interstellar molecules and nanoparticles (Bauschlicher et al. 2010; Goumans & Bromley 2011; Ricca et al. 2012; Boersma et al. 2014). Scale factors are used in this type of calculations (Bauschlicher et al. 2010) to minimize errors due to anharmonic effects, basis set incompleteness and unknown exchange-correlation effects in density functional theory approximations. The other, more rigorous, way is to do vibrational calculations with anharmonic correction to frequencies and intensities. We tested a new implementation of full anharmonic IR intensities at the second order of perturbation theory level (Barone et al. 2010; Bloino & Barone 2012). However, we found that the present implementation of this method (in the GAUSSIAN 09 code) is not suitable for the C_{3v} symmetry of (H₂CS)₃.

In this work, nine molecules [CS₂ (Shimanouchi 1972), C₂H₄S (Allen et al. 1986), C₂H₄O (Puzzarini et al. 2014), HS₂H (Jacox 1994), H₂CS (Jacox 1994), CH₃SH (Sverdlov, Kovner & Krainov 1974), CH₃SCH₃ (Sverdlov et al. 1974), SO₂ (Person & Zerbi 1982), and H₂S (Shimanouchi 1972)] were used to obtain the value of 0.9687 for the scaling factor. The mean average error, the mean absolute error, and the root-mean-square error were 7.7, 18.9 and, 23.1 cm⁻¹, respectively. The calculated intensities for the nine molecules were in good agreement with experiment what was actually expected from the chosen level of theory (B3LYP/aug-cc-pVTZ). The calculated frequencies of (CH₂S)₃, (CH₂S)₄, S₅CH₂, S₆CH₂, HSSSH, (CH₃)₂CS, and C₂H₄S were subsequently scaled with 0.9687 and, together with calculated intensities, used for astrophysical predictive purposes. For IR spectra presented in this work, we used Lorentzian band profiles with FWHM of 15 cm⁻¹.

Table 5. Calculated (scaled by 0.9687) and measured ^a(Wiesier et al. 1969) fundamental vibrational bands for HSSSH. Relative intensities of experimental bands are labelled with sh (shoulder), m (medium), and strong (s).

Mode	Symm.	Calculated			Rel. int.	Measured ^a		
		$\tilde{\nu}$ (cm ⁻¹)	λ (μ m)	IR int. (km mol ⁻¹)		$\tilde{\nu}$ (cm ⁻¹)	λ (μ m)	Rel. int.
1	A	2548.6	3.92	0.48	2	2540	3.94	sh
3		841.9	11.88	0.04	0	868	11.52	sh
5		458.8	21.79	0.10	0	487	20.53	sh
8		303.4	32.96	17.20	58	–	–	–
9		193.7	51.63	0.00	0	–	–	–
2	B	2547.1	3.93	0.90	3	2532	3.95	m
4		829.2	12.06	8.54	29	856	11.68	m
6		438.2	22.82	29.67	100	477	20.96	s
7		322.2	31.04	11.77	40	–	–	–

Table 6. Calculated (scaled by 0.9687) and measured vibrational fundamental bands for thioacetone, (CH₃)₂CS. Measured bands are from Lipscomb & Sharkey (1970)^a and NIST (2014)^b in vapour, as well as from Garrigou-Lagrange, Andrieu & Mollier (1974)^c in liquid. Relative intensities of experimental bands are labelled with m (medium), s (strong), and vs (very strong). Raman measurements in liquid are labelled by r.

Mode	Symm.	Calculated				Measured ^{a, b}		Measured ^c		Rel. int.
		$\tilde{\nu}$ (cm ⁻¹)	λ (μ m)	IR int. (km mol ⁻¹)	Rel. int.	$\tilde{\nu}$ (cm ⁻¹)	λ (μ m)	$\tilde{\nu}$ (cm ⁻¹)	λ (μ m)	
1	A ₁	3042.9	3.29	2.22	2	–	–	–	–	
2		2920.6	3.42	21.43	15	–	–	–	–	
3		1446.4	6.91	0.15	0	–	–	1423	7.03	m
4		1356.7	7.37	2.46	2	–	–	1359	7.36	r
5		1247.9	8.01	139.27	100	1274 ^a	7.85	1269	7.88	vs
6		985.0	10.15	7.46	5	–	–	–	–	–
7		685.8	14.58	0.30	0	–	–	704	14.20	r
8		363.5	27.51	0.69	0	363 ^b	27.548	380	26.32	s
9	A ₂	2953.0	3.39	0	–	–	–	–	–	
10		1420.1	7.04	0	–	–	–	1447	6.91	m
11		895.3	11.17	0	–	–	–	992	10.08	m
12		79.1	126.43	0	–	–	–	–	–	
13	B ₁	2960.0	3.38	15.87	11	–	–	–	–	
14		1442.3	6.93	17.78	13	–	–	1438	6.95	r
15		1042.9	9.59	0.34	0	–	–	1087	9.20	vs
16		435.9	22.94	2.04	1	–	–	436	22.94	m
17		152.6	65.53	0.50	0	153 ^b	65.359	–	–	–
18	B ₂	3041.2	3.29	8.59	6	–	–	–	–	
19		2912.5	3.43	1.57	1	–	–	–	–	
20		1413.2	7.08	6.56	5	–	–	1423	7.03	m
21		1345.0	7.44	18.47	13	–	–	1353	7.39	m
22		1175.1	8.51	8.36	6	–	–	1195	8.37	m
23		902.2	11.08	3.61	3	–	–	896	11.16	r
23	374.7	26.68	1.06	1	–	–	–	–	–	

3 RESULTS AND DISCUSSION

3.1 Infrared spectra

Figs 1–3 show optimized geometries of molecules we study. Both (CH₂S)₃ and (CH₂S)₄ are chair-shaped cyclic structures (Fig. 1), where rings are composed of, respectively, six and eight alternating C and S atoms. In contrast, in the rings of S₅CH₂ and S₆CH₂ (Fig. 2) only one carbon atom exists, whereas two C atoms appear in the cyclic structure of C₂H₄S (Fig. 3 c). Zig-zag (or helix) structures of either S, or C atoms exist for, respectively, HSSSH (Fig. 3 a) and C₃H₆S (Fig. 3 b). The coordinates of optimized structures for all molecules are available as the online-only Supporting Information.

We have calculated that (CH₂S)₃ has a large dipole moment of 2.1787 Debye. In contrast the dipole moment of (CH₂S)₄ is zero. It is known that molecules with a zero dipole moment are radio inactive.

Therefore, (CH₂S)₄ could only be detected in the IR spectral region and for radio telescopes this molecule would behave as the hidden part of a possible reservoir of sulphur. Dipole moments of 1.9784, 1.7086, 1.9669, 0.5085, 2.9493 Debye are calculated for S₅CH₂, S₆CH₂, C₂H₄S, HSSSH, (CH₃)₂CS, respectively.

Our results for IR spectra are shown in Figs 4–6, whereas the bands and their intensities are presented in Tables 1–7. Relative intensities of calculated bands shown in these tables are determined as percentage of the strongest band. Relative intensities of measured bands are known only qualitatively (v–very, s–strong, m–mean, w–weak, e–extremely), and were after (Klaboe 1969; Wiesier et al. 1969; Ellestad et al. 1972) assigned a quantitative measure by dividing the interval from 0 to 1 into six equal parts.

In (CH₂S)₃, the strongest calculated band at 14.46 μ m is dominantly due to the C–S stretching (Table 1). The same is valid for

Table 7. Calculated (scaled by 0.9687) and measured^a(Allen et al. 1986) vibrational fundamental bands for thiirane, C₂H₄S. Three IR inactive A₂ modes are omitted.

Mode	Symm.	Calculated		IR int. (km mol ⁻¹)	Rel. int.	Measured ^a	
		$\tilde{\nu}$ (cm ⁻¹)	λ (μ m)			$\tilde{\nu}$ (cm ⁻¹)	λ (μ m)
1	A ₁	3027.5	3.30	15.89	62	3014	3.32
2		1449.9	6.90	2.58	10	1457	6.86
3		1105.0	9.05	1.66	6	1109	9.02
4		1012.0	9.88	0.68	3	1024	9.76
5		599.6	16.68	25.59	100	627	15.95
9	B ₁	3115.5	3.21	3.36	13	3088	3.24
10		923.3	10.83	3.24	13	945	10.58
11		810.5	12.34	0.57	2	824	12.14
12	B ₂	3026.7	3.30	11.57	45	3013	3.32
13		1428.5	7.00	0.90	4	1436	6.96
14		1044.4	9.57	22.33	87	1051	9.51
15		637.6	15.68	0.38	1	–	–

the pair of the (CH₂S)₄ calculated rather strong bands at 12.66 and 13.96 μ m (Table 2). The strongest calculated band of (CH₂S)₄ is at 14.43 μ m. We are not aware of any existing measured IR vibrational data concerning pentathian and hexathiepan. The vibrational normal modes involving sulphur atoms are generally weak. This is particularly well seen in pentathian and hexathiepan where the strongest bands, respectively, at 23.93 and 22.31 μ m are only 10.13 and 6.41 km mol⁻¹ strong (Tables 3 and 4).

In the case of HSSSH, the strong band calculated at 22.82 μ m is the antisymmetric S–S stretching (Table 5). Vibrational spectra of H₂S₃ were first measured in CCl₄ and CS₂ solutions, but the *cis* conformer was assigned as a carrier (Wiesier et al. 1969). More recently, the IR spectrum of H₂S₃ was measured in the gas phase in the range from 400 to 4000 cm⁻¹, but unfortunately with a low resolution, and only frequencies measured at 2548, 865, and 480 cm⁻¹ were reported (Liedtke et al. 1993). However, both measurements (Wiesier et al. 1969; Liedtke et al. 1993) and our results show that IR frequencies of *trans* and *cis* conformers are similar. In Table 5, we compare our results with detailed measurements (Wiesier et al. 1969). Liedtke and coworkers also reported the calculated IR frequencies done using the Moller–Plesset perturbation operator (MP2) and the MC-311G(d,p) basis set. Their frequencies are unscaled and bands start at much higher (for 243 cm⁻¹) values than experimental and these we calculated.

The only band of thioacetone worth of searching for in space should be a very strong C=S stretching band calculated at 8.01 μ m (Table 6). Thiirane can be detected by measuring its two strongest bands calculated at 16.68 and 9.57 μ m (Table 7). The former can be described as a symmetric C–S stretching, while the latter as a CH₂ wagging. First, 14 modes in the IR spectra of thiirane were measured and assigned by Allen et al. (1986). Recently, far-IR modes at 760–400 and 170–10 cm⁻¹ were studied using the synchrotron light source (Bane et al. 2012). Two modes $\nu_5 = 628.1$ and $\nu_{15} = 669.7$ cm⁻¹ were measured, as well as subsequently calculated at the B3LYP/cc-pVTZ level, and then fitted.

For all molecules, we study some other rather strong bands exist, but they are typical for the C–H bonds. Thus, these bands are less suitable for a search of the sulphur-bearing species in space.

In Table 8, we compare calculated bands of (CH₂S)₃, (CH₂S)₄, and C₂H₄S with unidentified features observed by *ISO* in, either galaxies known for their starburst activity, or galaxies with active galactic nuclei: M82, NGC 253, the 30 Doradus star-forming region in the Large Magellanic Cloud, NGC 1068, Circinus, Arp 220 (Fischer et al. 1999; Lutz et al. 2000; Sturm et al. 2000; ISO

2002). We find that the interval around unidentified bands, determined by the scaling factor used within the density functional theory method, contains 10 calculated bands of (CH₂S)₃, 11 of (CH₂S)₄, and 5 of C₂H₄S. For all three species two bands with highest intensities (labelled bold in Table 8) belong to the interval around unidentified bands. Therefore, (CH₂S)₃, (CH₂S)₄, and C₂H₄S are good candidates for carriers of several unidentified bands observed by *ISO* (Fischer et al. 1999; Lutz et al. 2000; Sturm et al. 2000; ISO 2002). *ISO* observations showed that intensities of bands vary considerably depending on the extragalactic source (Sturm et al. 2000). The strongest calculated bands in Table 8 are at 3.3, 3.4, 8.3, 14.8, and 16.5 μ m. These positions agree with bands in some of objects observed by *ISO*. The band at 3.3 and its satellite at 3.4 μ m are strong in M82, NG253, 30 Doradus, and Circinus. This feature is weaker in NGC 1068. The band at 8.3 μ m was observed only in M82, and it is not strong. The band at 14.8 μ m is also not strong. It was detected in M82, NGC253, 30 Doradus, and Circinus. The band at 16.5 μ m was observed in three galaxies. It is strong in M82 and NGC 253, whereas it is weak in the 30 Doradus region. Differences of intensities in observed spectra are results of different physical conditions in extragalactic objects.

Table 9 shows that in the proposed interval around unidentified bands are positioned 5 bands of S₅CH₂, 9 of S₆CH₂, 3 of HSSSH, and 10 of (CH₃)₂CS. However, either two strongest bands (S₅CH₂, (CH₃)₂CS), or only the strongest one (S₆CH₂, HSSSH) do not belong to this interval. Because of high-quality basis set that has been shown to produce accurate IR intensities (Zvereva et al. 2011), S₅CH₂, S₆CH₂, HSSSH, and (CH₃)₂CS are less probable carriers of unidentified features observed in selected galactic sources by *ISO* (Fischer et al. 1999; Lutz et al. 2000; Sturm et al. 2000; ISO 2002).

3.2 Sulphur-bearing species in extragalactic molecular gases

Below we present the list of the presently detected (to the best of our knowledge) sulphur-bearing species in NGC 253, M82, NGC1068, Circinus, Arp 220, and 30 Doradus. These objects were observed by *ISO* and unidentified features were found (Fischer et al. 1999; Lutz et al. 2000; Sturm et al. 2000; ISO 2002). Ultraviolet, X-ray, and cosmic ray irradiations, as well as shocks, are present in these galaxies and determine the chemical processes in molecular gases for sulphur-bearing and other species. For example, it was found in laboratories on Earth that UV and X-ray irradiations catalyse the formation of (CH₂S)₃ and (CH₂S)₄ from H₂CO and H₂S (Credali

Table 8. Comparison of unidentified lines and bands in the (2–200) μm range observed by *Infrared Space Observatory*^a (Fischer et al. 1999; Lutz et al. 2000; Sturm et al. 2000; ISO 2002), and our results for the trimer and tetramer of thioformaldehyde, as well as for thiirane. The two strongest calculated bands are shown in bold and $\Delta = 18.9 \text{ cm}^{-1}$ is the mean average error after using the scaling factor within the density functional theory calculation method.

λ (μm) ^a	$\tilde{\nu}$ (cm^{-1}) ^a	$\tilde{\nu} - \Delta$ (cm^{-1})	$\tilde{\nu} + \Delta$ (cm^{-1})	(CH ₂ S) ₃ $\tilde{\nu}$ (cm^{-1})	(CH ₂ S) ₄ $\tilde{\nu}$ (cm^{-1})	C ₂ H ₄ S $\tilde{\nu}$ (cm^{-1})
3.25	3076.92	3058.0	3095.8	–	–	–
–	–	–	–	–	–	3115.5
3.3	3030.30	3011.4	3049.2	3028.7; 3027.2	3035.9; 3031.5	3027.5 ; 3026.7
–	–	–	–	–	2980.7	–
–	–	–	–	–	2978.1	–
3.4	2941.18	2922.3	2960.1	2953.4; 2947.9	–	–
3.5	2857.14	2838.2	2876.0	–	–	–
3.75	2666.67	2647.8	2685.6	–	–	–
5.25	1904.76	1885.9	1923.7	–	–	–
5.65	1769.91	1751.0	1788.8	–	–	–
6.0	1666.67	1647.8	1685.6	–	–	–
6.2	1612.90	1594.0	1631.8	–	–	–
6.3	1587.30	1568.4	1606.2	–	–	–
–	–	–	–	–	–	1449.9
7.0	1428.57	1409.7	1447.5	–	–	1428.5
–	–	–	–	–	1400.1	–
–	–	–	–	1392.5; 1379.4	1376.0	–
7.555	1323.63	1304.7	1342.5	–	–	–
7.6	1315.79	1296.9	1334.7	–	–	–
7.8	1282.05	1263.2	1301.0	–	–	–
8.3	1204.82	1185.9	1223.7	1204.5	1210.7 ; 1203.7	–
8.6	1162.79	1153.9	1181.7	–	–	–
–	–	–	–	1151.7	–	–
–	–	–	–	–	1136.6	–
–	–	–	–	–	1122.2	–
–	–	–	–	–	–	1105.0
–	–	–	–	–	–	1044.4
–	–	–	–	–	–	1012.0
10.6	943.40	924.5	962.3	–	–	–
–	–	–	–	–	–	923.3
11.05	904.98	886.1	923.9	–	–	–
11.25	888.89	870.0	907.8	888.4	–	–
12.0	833.33	814.4	852.2	–	–	–
–	–	–	–	–	–	810.5
12.7	787.40	768.5	806.3	769.6	797.4; 789.7	–
13.55	738.01	729.1	756.9	–	–	–
–	–	–	–	–	716.6	–
14.25	701.75	682.8	720.6	–	–	–
14.8	675.68	656.8	694.6	691.3	692.8	–
15.7	636.94	618.0	655.8	629.2; 622.4	–	637.6
16.5	606.06	587.2	625.0	–	610.6; 599.4	599.6
17.4	574.71	555.8	593.6	–	–	–
18.0	555.56	536.7	574.5	–	–	–
–	–	–	–	381.2	–	–
–	–	–	–	–	365.3	–
34.0	294.12	275.2	313.0	–	278.5	–
–	–	–	–	274.8	–	–
–	–	–	–	268.3	–	–
–	–	–	–	–	195.2	–
60.12	166.33	147.4	185.2	–	–	–
74.24	134.70	119.5	153.6	–	128.1	–
–	–	–	–	169.4	–	–
77.155	129.61	110.7	148.5	–	–	–
153.12	65.31	46.4	84.2	–	–	–
–	–	–	–	–	31.3	–

Table 9. Comparison of unidentified lines and bands in the (2–200) μm range observed by *Infrared Space Observatory*^a (Fischer et al. 1999; Lutz et al. 2000; Sturm et al. 2000; ISO 2002), and our results for pentathian, hexathiepan, trisulfane, and thioacetone. The two strongest calculated bands are shown in bold and $\Delta = 18.9 \text{ cm}^{-1}$ is the mean average error after using the scaling factor within the density functional theory calculation method.

λ (μm) ^a	$\tilde{\nu}$ (cm^{-1}) ^a	$\tilde{\nu} - \Delta$ (cm^{-1})	$\tilde{\nu} + \Delta$ (cm^{-1})	S ₅ CH ₂ $\tilde{\nu}$ (cm^{-1})	S ₆ CH ₂ $\tilde{\nu}$ (cm^{-1})	HSSSH $\tilde{\nu}$ (cm^{-1})	(CH ₃) ₂ CS $\tilde{\nu}$ (cm^{-1})
3.25	3076.92	3058.0	3095.8	–	–	–	–
3.3	3030.30	3011.4	3049.2	3024.4	–	–	3042.9; 3041.2
–	–	–	–	–	3006.8	–	–
–	–	–	–	2960.1	–	–	–
3.4	2941.18	2922.3	2960.1	–	2951.7	–	2960.0
–	–	–	–	–	–	–	2920.6 ; 2912.5
3.5	2857.14	2838.2	2876.0	–	–	–	–
3.75	2666.67	2647.8	2685.6	–	–	–	–
–	–	–	–	–	–	2548.6	–
–	–	–	–	–	–	2547.1	–
5.25	1904.76	1885.9	1923.7	–	–	–	–
5.65	1769.91	1751.0	1788.8	–	–	–	–
6.0	1666.67	1647.8	1685.6	–	–	–	–
6.2	1612.90	1594.0	1631.8	–	–	–	–
6.3	1587.30	1568.4	1606.2	–	–	–	–
7.0	1428.57	1409.7	1447.5	–	–	–	1446.4; 1442.3; 1413.2
–	–	–	–	1390.7	1386.2	–	1356.7; 1345.0
7.555	1323.63	1304.7	1342.5	–	–	–	–
7.6	1315.79	1296.9	1334.7	–	–	–	–
7.8	1282.05	1263.2	1301.0	–	–	–	–
–	–	–	–	–	–	–	1247.9
8.3	1204.82	1185.9	1223.7	–	–	–	–
8.6	1162.79	1153.9	1181.7	1175.6	1175.2	–	1175.1
–	–	–	–	1084.8	1094.9	–	1042.9; 985.0
10.6	943.40	924.5	962.3	–	–	–	–
11.05	904.98	886.1	923.9	–	–	–	902.2
11.25	888.89	870.0	907.8	–	–	–	–
12.0	833.33	814.4	852.2	–	–	841.9; 829.2	–
–	–	–	–	813.0	–	–	–
12.7	787.40	768.5	806.3	–	790.8	–	–
13.55	738.01	729.1	756.9	–	–	–	–
14.25	701.75	682.9	720.6	–	688.0	–	685.8
14.8	675.68	656.8	694.6	670.2	–	–	–
15.7	636.94	618.0	655.8	–	–	–	–
16.5	606.06	587.2	625.0	599.4	591.3	–	–
17.4	574.71	555.8	593.6	–	–	–	–
18.0	555.56	536.7	574.5	–	–	–	–
–	–	–	–	486.0	460.5	458.8	–
–	–	–	–	474.4	456.6	438.2	–
–	–	–	–	417.9	448.3	–	–
–	–	–	–	357.6	403.0	–	–
–	–	–	–	342.5	373.0	–	435.9
–	–	–	–	–	347.3	322.2	374.7; 363.5
34.0	294.12	275.2	313.0	–	–	303.4	–
–	–	–	–	241.5	270.6	–	–
–	–	–	–	222.0	228.7	–	–
–	–	–	–	189.9	193.0	193.7	–
60.12	166.33	147.4	185.2	173.2	174.8; 161.3	–	152.6
74.24	134.70	119.5	153.6	–	–	–	–
77.155	129.61	110.7	148.5	–	111.0	–	–
153.12	65.31	46.4	84.2	–	–	–	–
–	–	–	–	35.2	–	–	–

& Russo 1967). Therefore, favourable conditions for the formation of (CH₂S)_n exist in extragalactic molecular gases.

NGC 253 is also known as the Sculptor, or the Silver dollar galaxy. It is the bright, spiral, starburst galaxy where many molecular lines have been detected. Sulphur-bearing species H₂S, CS, C₂S, NS, SO, H₂CS, OCS, and SO₂ were observed in the

nuclear region of NGC 253 using the Institute for Radio Astronomy in the Millimeter Range (IRAM) 30 m and the Swedish-ESO Submillimetre Telescope (SEST; Martin et al. 2005, 2006). It was proposed that turbulent motions and shocks release H₂S and OCS from grain mantles into the gas phase. Then other sulphur-bearing species are formed in the gas-phase chemistry processes. Relative

abundances of sulphur-bearing molecules in different environments suggest that the chemical processes in the nuclear region of NGC 253 are similar to those in the Sgr B2 envelope in the galactic centre (Martin et al. 2008). Low-velocity large scale shocks were found responsible for the similar sulphur chemistry in these two regions. Both formaldehyde (Gardner & Whiteoak 1974) and H_2S (Martin et al. 2005, 2006), which react in laboratories under irradiation and form $(\text{CH}_2\text{S})_n$, were detected in NGC 253.

M82, also known as NGC 3034 or Cigar, is an irregular starburst galaxy. It was found that the chemical processes in M82 and NGC 253 are different (Martin et al. 2006; Aladro et al. 2011). Although both galaxies are starburst, they are at the different evolutionary stage. M82 is more evolved starburst where photodissociation regions (Tielens & Hollenbach 1985) are dominant in the heating of the molecular gas. These processes are driven by ultraviolet photons from young stars. Molecular abundances in M82 are similar to the well-studied photon-dominated region the Orion bar. Photon-dominated regions are also present in NGC 253 (Martin, Martin-Pintado & Viti 2009), but they do not drive the heating of molecular clouds. IRAM 30 m telescope was used to study the chemical species in the central parts of M82 (Aladro et al. 2011). Among 18 detected molecules several sulphur species were found: H_2S , H_2CS , CS, SO, and SO_2 . Formaldehyde was also detected in M82 (Aladro et al. 2011) and could under irradiation react with H_2S to form $(\text{CH}_2\text{S})_n$.

NGC 1068, also known as M77, is a barred, spiral, active galaxy. Although NGC 1068 is with an active galactic nucleus, it also contains the starburst ring (García-Burillo et al. 2014; Takano et al. 2014; Viti et al. 2014). The chemical composition of molecular clouds in NGC 1068 was studied by the IRAM 30 m telescope (Aladro et al. 2013). 17 molecules and 7 isotopologues were detected and among them sulphur species SO, NS, and CS. The results for NGC 1068 were compared to the starburst galaxies M82 and NGC 253. Some sulphur molecules which were detected in two starburst galaxies, such as OCS, SO_2 , C_2S , H_2S , and H_2CS , have not been yet found in NGC 1068. Recently, NGC 1068 was studied using the Atacama Large Millimeter Array (ALMA; García-Burillo et al. 2014; Takano et al. 2014; Viti et al. 2014). Takano and coworkers studied several molecular transitions (including those in sulphur species CS and SO) in the central region of NGC 1068. García-Burillo et al. (2014), as well as Viti et al. (2014) also investigated the molecular gas in NGC 1068 using the ALMA telescope. They mapped the emission of several tracers (including CS) and underlying continuum emission of the circumnuclear disc and the starburst ring.

The Circinus galaxy is an active, starburst, spiral galaxy. NGC 1068 and Circinus are similar. Both are typical Seyfert 2 galaxies close to the Milky Way and contain the molecular gas which surrounds nuclei, as well as star-forming rings (Zhang et al. 2014). Several molecular transitions, and among them in sulphur species CS and SO, were observed in the study of a dense molecular gas in the central part of the Circinus galaxy using the SEST telescope (Curran et al. 2001).

Arp 220 is an ultraluminous infrared galaxy closest to Earth. This elliptical galaxy is the merger system and contains a star-forming region as well as a double nucleus. The pre-biotic molecule methanimine (CH_2NH) was detected in Arp 220 (Salter et al. 2008). The molecular composition of Arp 220 was studied using the Submillimeter Array in Mauna Kea, Hawaii (Martín et al. 2011). 15 molecular species and 6 isotopologues were observed, and among them sulphur-bearing molecules: H_2S , SO, NS, and CS. Formaldehyde was also detected.

The star-forming region 30 Doradus in the Large Magellanic cloud, also known as the Tarantula nebula or NGC 2070, is the most active in the Local Group. Heikkilä et al. (1999) studied molecular abundances in 30 Doradus using the SEST telescope. They detected several molecular transitions and among them in CS and SO. The sulphur-bearing molecule CS in 30 Doradus was also observed by Rubio, Paron & Dubner (2009) using SEST, and in recent studies by the ALMA telescope (Indebetouw et al. 2013).

We find that all six bright bands from Table 8 agree with features observed in M82. Five strong calculated bands agree with observed features in NGC 253 and 30 Doradus, three in Circinus, and only one in NGC 1068. Therefore, starburst galaxies are more favourable for the formation of $(\text{CH}_2\text{S})_3$, $(\text{CH}_2\text{S})_4$, and $\text{C}_2\text{H}_4\text{S}$. This is especially true for M82, an evolved starburst with main processes driven by UV photons, where all six calculated bright bands were observed.

3.3 Sulphur-bearing species in galactic molecular gases: Orion KL and Sgr B2

Orion KL and Sgr B2 are well-known galactic molecular clouds where star forming is pronounced (Goicoechea 2008). They both were investigated by *ISO* in the far-IR region where they are in the group of the brightest sources.

Orion KL was investigated in the (486–492) GHz and (541–577) GHz intervals by the *Odin* satellite, and 280 spectral lines were observed from 38 molecules (Persson et al. 2007). Among them 64 lines were unidentified. Several sulphur species were detected: SO_2 , SO, H_2CS , H_2S , OCS, CS, HCS^+ , as well as formaldehyde. Tentative assignments were done for SiS, SH^- , and SO^+ . Sulphur-bearing species in Orion KL were also studied with the IRAM 30 m telescope in the (80–115.5) GHz, (130–178) GHz, and (197–281) GHz intervals (Tercero et al. 2010; Esplugues et al. 2013). More than 14 400 spectral features were detected and 10 040 were identified and attributed to 43 molecules, among which the following were sulphur species: OCS, HCS^+ , H_2CS , CS, CCS, C_3S , SO, and SO_2 . These results (Persson et al. 2007; Tercero et al. 2010; Esplugues et al. 2013) show that rich sulphur chemistry takes place in Orion KL. We find that two bands calculated for S_5CH_2 (52.65 and 57.72 μm in our Table 3) are close to unidentified bands at 52.57 and 58.02 μm observed by *ISO* in the Orion KL (see their table 10; Lerate et al. 2006). However, Lerate and coworkers observed only the far-IR region (44–188) μm , whereas the majority of the bands we calculate for pentathian (as well as for other sulphur molecules studied in this work) are in the near and mid-IR.

It was proposed that similar sulphur chemistry exists in the nucleus of the starburst galaxy NGC 253 and Sgr B2 in the galactic centre (Martin et al. 2008). Sgr B2 was studied with *ISO* in the near/mid-IR (Lutz et al. 1996) and in the far-IR region (Goicoechea, Rodríguez-Fernández & Cernicharo 2004; Polehampton et al. 2007), but the attention was not devoted to the sulphur-bearing species. However, some unidentified features were observed (Polehampton et al. 2007). The Mopra 3-mm spectral line survey confirms that several sulphur-bearing molecules exist in Sgr B2 (Armijos-Abendaño et al. 2014). These are CCS, OCS, CS, SiS, HCS^+ , SO_2 , and HNCS. Several unidentified lines were also observed. Sulphur-bearing species H_2S , SO, SO_2 , H_2CS , OCS, NS, SH^+ , and HCS^+ were observed in Sgr B2 by the *Herschel* telescope molecular line survey in the (157–625) μm range (Neill et al. 2014).

4 CONCLUSIONS

Astrochemistry of sulphur is still unknown. We calculated IR spectra of several sulphur-bearing molecules and proposed that

they take the role in the balance of the sulphur in dense clouds and comets. We studied ring molecules ($(\text{CH}_2\text{S})_3$, $(\text{CH}_2\text{S})_4$, pentathian (S_5CH_2), hexathiepan (S_6CH_2), thiirane ($\text{C}_2\text{H}_4\text{S}$), and in addition two other sulphur-bearing molecules trisulfane (HSSSH) and thioacetone ($(\text{CH}_3)_2\text{CS}$). We found that calculated bands of $(\text{CH}_2\text{S})_3$, $(\text{CH}_2\text{S})_4$, and $\text{C}_2\text{H}_4\text{S}$ agree with several unidentified features observed by *ISO* in starburst galaxies (M82, NGC 253, the 30 Doradus star-forming region in the Large Magellanic Cloud), and galaxies with active galactic nuclei (NGC 1068, Circinus). Studies of molecular compositions of several of these extragalactic objects on ALMA are still in progress. Many star forming and other objects exist, and could act as the place with rich sulphur chemistry. Galactic objects where complex sulphur-bearing species could easily form are Orion KL and Sgr B2. We hope that a high resolution and sensitivity of ALMA, and in the future of the *James Webb Space Telescope* in the IR spectral region, will enable detection of larger sulphur-bearing molecules.

ACKNOWLEDGEMENTS

This work was done using the CRO-NGI e-grid and the computational cluster ‘Isabella’ at the University of Zagreb Computing Centre SRCE. Bilalbegović acknowledges the support of the University of Zagreb research fund, grant ‘Physics of Stars and Cosmic Dust’. We are grateful to Guillermo Manuel Muñoz Caro for the useful correspondence, as well as for sending his PhD thesis and the article (Jiménez-Escobar et al. 2014) prior publication. This research has made use of NASA’s Astrophysics Data System Bibliographic Services. We thank the referee for constructive comments.

REFERENCES

- Aladro R., Martín S., Martín-Pintado J., Mauersberger R., Henkel C., Ocaña Flaquer B., Amo-Baladrón M. A., 2011, *A&A*, 535, A84
- Aladro R. et al., 2013, *A&A*, 549, A39
- Allen W. D., Bertie J. E., Falk M. V., Hess B. A., Jr, Mast G. B., Othen D. A., Schaad L. J., Schaefer H. F., III, 1986, *J. Chem. Phys.*, 84, 4211
- Anderson D. E., Bergin E. A., Maret S., Wakelam V., 2013, *ApJ*, 779, 141
- Antolinez S., Lesarri A., Mata S., Blanco S., Lopez J. C., Alonso J. L., 2002, *J. Mol. Struct.*, 612, 125
- Armijos-Abendaño J., Martín-Pintado J., Requena-Torres M. A., Martín S., Rodríguez-Franco A., 2014, preprint ([arXiv:1410.5762](https://arxiv.org/abs/1410.5762))
- Bane M. K., Thompson C. D., Appadoo D. R. T., McNaughton D., 2012, *J. Chem. Phys.*, 137, 084306
- Barone V., Bloino J., Guido C. A., Lipparini F., 2010, *Chem. Phys. Lett.*, 496, 157
- Bauschlicher C. W. et al., 2010, *ApJS*, 189, 341
- Becke A. D., 1993, *J. Chem. Phys.*, 98, 5648
- Becke A. D., 2014, *J. Chem. Phys.*, 301, 5648
- Bell M. B., Feldman P. A., Travers M. J., McCarthy M. C., Gottlieb C. A., Thaddeus P., 1997, *ApJ*, 483, L61
- Biver N. et al., 1997, *Science*, 275, 1915
- Bloino J., Barone V., 2012, *J. Chem. Phys.*, 136, 124108
- Bockelée-Morvan D. et al., 2000, *A&A*, 353, 1101
- Boersma C. et al., 2014, *ApJS*, 211, 8
- Buckle J. V., Fuller G. A., 2003, *A&A*, 399, 567
- Cervellati R., Corbelli G., Lister D. G., 1984, *J. Mol. Struct.*, 117, 247
- Charnley S. B., 1997, *ApJ*, 481, 396
- Credali L., Russo M., 1967, *Polymer*, 8, 469
- Crovisier J., Leech K., Bockelée-Morvan D., Brooke T. Y., Hanner M. S., Altieri B., Uwe Keller H., Lellouch E., 1997, *Science*, 275, 1904
- Curran S. J., Johansson L. E. B., Bergman P., Heikkilä A., Aalto S., 2001, *A&A*, 568, A122
- Dickens J. E., Irvine W. M., Ohishi M., Ikeda M., Ishikawa S., Nummelin A., Hjalmarsen A., 1997, *ApJ*, 489, 753
- Dorofeeva O. V., Gurvich L. V., 1995, *J. Phys. Chem. Ref. Data*, 24, 1351
- Druard C., Wakelam V., 2012, *MNRAS*, 426, 354
- Ellestad O. H., Klaboe P., Hagen G., Stroyer-Hansen T., 1972, *Spectrochim. Acta A*, 28, 149
- Esplugues G. B., Tercero B., Cernicharo J., Goicoechea J. R., Palau A., Marcelino N., Bell T. A., 2013, *A&A*, 556, A143
- Ferrante R. F., Moore M. H., Spiliotis M. M., Hudson R. L., 2008, *ApJ*, 684, 1210
- Festou M., Uwe Keller H., Weaver H. A. eds., 2004, *Comets II*. Univ. Arizona Press, Tucson, AZ, p. 391
- Fischer J. et al., 1999, *Ap&SS*, 266, 91
- Frisch M. J. et al., 2013, Gaussian 09 Revision D.01. Gaussian Inc., Wallingford CT 2009
- García-Burillo S. et al., 2014, *A&A*, 567, A125
- Gardner F. F., Whiteoak J. B., 1974, *Nature*, 247, 526
- Garozzo M., Fulvio D., Kanuchova Z., Palumbo M. E., Strazzulla G., 2010, *A&A*, 509, A67
- Garrigou-Lagrange C. G., Andrieu Y., Mollier C., 1974, *Spectrochim. Acta A*, 32, 477
- Gibb E., Nummelin A., Irvine W. M., Whittet D. C. B., Bergman P., 2000, *ApJ*, 545, 309
- Goicoechea J. R., 2008, *EAS Publ. Ser.*, 31, 73
- Goicoechea J. R., Rodríguez-Fernández N. J., Cernicharo J., 2004, *ApJ*, 600, 214
- Goumans T. P. M., Bromley S. T., 2011, *MNRAS*, 414, 1285
- Heikkilä A., Johansson L. E. B., Olofsson H., 1999, *A&A*, 344, 817
- Hirao T., Okabayashi T., Tanimoto M., 2001, *J. Mol. Spectrosc.*, 208, 148
- Hirose C., Okiye K., Maeda S., 1976, *Bull. Chem. Soc. Japan*, 49, 916
- Indebetouw R. et al., 2013, *ApJ*, 774, 73
- ISO 2002, Unidentified Lines and Bands in the 2-200 μm Range. Available at: <http://www.ipac.caltech.edu/iso/lws/unidentified.html>
- Jacox M. E., 1994, *J. Phys. Chem. Ref. Data*, Monograph 3, Updated Data in NIST Chemistry Webbook. Available at: <http://webbook.nist.gov/chemistry/>
- Jiménez-Escobar A., Muñoz Caro G. M., 2011, *A&A*, 536, A91
- Jiménez-Escobar A., Muñoz Caro G. M., Ciaravella A., Cecchi-Pastellini C., Candia R., Micela G., 2012, *ApJ*, 751, L40
- Jiménez-Escobar A., Muñoz Caro G. M., Chen Y. J., 2014, *MNRAS*, 443, 343
- Keller L. P. et al., 2002, *Nature*, 417, 148
- Kirchner B., Huber H., Steinebrunner G., Dreizler H., Grabow J. U., Merke I., 1997, *Z. Naturforsch.*, 52, 297
- Klaboe P., 1969, *Spectrochim. Acta A*, 25, 1437
- Kolesnikova L., Tercero B., Cernicharo J., Alonso J. L., Daly A. M., 2014, *ApJ*, 784, L7
- Kroto H. W., Landsberg B. M., Suffolk R. J., Vodden A., 1974, *Chem. Phys. Lett.*, 29, 265
- Lerate M. R. et al., 2006, *MNRAS*, 370, 597
- Liedtke M. et al., 1993, *J. Phys. Chem.*, 97, 11204
- Liedtke M., Yamada K. M. T., Winnewisser G., Hahn J., 1997, *J. Mol. Struct.*, 413, 265
- Linke R. A., Frerking M. A., Thaddeus P., 1979, *ApJ*, 234, L139
- Lipscomb R. D., Sharkey W. H., 1970, *J. Polymer Sci. A*, 18, 2187
- Lutz D. et al., 1996, *A&A*, 315, L269
- Lutz D., Sturm E., Genzel R., Moorwood A. F. M., Alexander T., Netzer H., Sternberg A., 2000, *ApJ*, 536, 697
- Maeda A. et al., 2008, *ApJS*, 176, 543
- Martín S., Martín-Pintado J., Mauersberger R., Henkel C., García-Burillo S., 2005, *ApJ*, 620, 210
- Martín S., Mauersberger R., Martín-Pintado J., Henkel C., García-Burillo S., 2006, *ApJS*, 164, 450
- Martín S., Requena-Torres M. A., Martín-Pintado J., Mauersberger R., 2008, *ApJ*, 678, 245
- Martín S., Martín-Pintado J., Viti S., 2009, *ApJ*, 706, 1323
- Martín S. et al., 2011, *A&A*, 527, A36
- Muñoz Caro G. M., 2002, PhD thesis, Leiden University
- Nash C. P., Kenneth Musker W., Lam A. P. J., 1988, *Appl. Spectrosc.*, 42, 494

- Neill J. L. et al., 2014, *ApJ*, 789, 8
 NIST 2014, Chemistry Webbook. Available at: <http://webbook.nist.gov/chemistry>
- Palumbo M. E., Geballe T. R., Tielens A. G. G. M., 1997, *ApJ*, 479, 839
 Peach M. E., Weissflog E., Pelz N., 1975, *J. Mass. Spectrom.*, 10, 781
 Penzias A. A., Solomon P. M., Wilson R. W., Jefferts K. B., 1971, *ApJ*, 168, L53
 Person W. B., Zerbi G., 1982, *Vibrational Intensities in Infrared and Raman Spectroscopy*. Elsevier, Amsterdam
 Persson C. M. et al., 2007, *A&A*, 476, 807
 Polehampton E. T., Baluteau J.-P., Swinyard B. M., Goicoechea J. R., Brown J. M., White G. J., Cernicharo J., Grundy T. W., 2007, *MNRAS*, 377, 1122
 Puzzarini C., Biczysko M., Bloino J., Barone V., 2014, *ApJ*, 785, 1
 Ricca A., Bauschlicher C. W., Boersma C., Tielens A. G. G. M., Allamandola L. J., 2012, *ApJ*, 754, 75
 Rubio M., Paron S., Dubner G., 2009, *A&A*, 505, 177
 Ruffle D. P., Hartquist T. W., Caselli P., Williams D. A., 1999, *MNRAS*, 306, 691
 Salter C. J., Ghosh T., Catinella B., Lebron M., Lerner M. S., Minchin R., Momjian E., 2008, *AJ*, 136, 389
 Scappini F., Cecchi-Pestellini C., Smith H., Klemperer W., Dalgarno A., 2003, *MNRAS*, 341, 657
 Shimanouchi T., 1972, *Tables of Molecular Vibrational Frequencies, Consolidated Volume 1*. National Standard Reference Data System, Washington, DC
 Sinclair M. W., Fourikis N., Ribes J. C., Robinson B. J., Brown R., Godfrey P. D., 1973, *Aust. J. Phys.*, 26, 85
 Snyder L. E., Buhl D., Zuckerman B., Palmer P., 1969, *Phys. Rev. Lett.*, 22, 679
 Stephens P. J., Devlin F. J., Chabrowski C. F., Frish M. J., 1994, *J. Chem. Phys.*, 98, 11623
 Sturm E., Lutz D., Tran D., Feuchtgruber H., Genzel R., Kunze D., Moorwood A. F. M., Thornley M. D., 2000, *A&A*, 358, 481
 Sverdlov L. M., Kovner M. A., Krainov E. P., 1974, *Vibrational Spectra of Polyatomic Molecules*. Wiley, New York
 Takano S. et al., 2014, *PASJ*, 66, 75
 Tercero B., Cernicharo J., Pardo J. R., Goicoechea J. R., 2010, *A&A*, 517, A96
 Thaddeus P., Kutner M. L., Penzias A. A., Wilson R. W., Jefferts K. B., 1972, *ApJ*, 176, L73
 Tieftrunk A., des Forets G. P., Schilke P., Walmsley C. M., 1994, *A&A*, 289, 579
 Tielens A. G. G. M., 2013, *Rev. Mod. Phys.*, 85, 1021
 Tielens A. G. G. M., Hollenbach D., 1985, *ApJ*, 291, 722
 Tielens A. G. G. M., Whittet D. C. B., 1997, in van Dishoeck E. F., ed., *Proc. IAU Symp. 178, Molecules in Astrophysics*. Kluwer, Dordrecht, p. 45
 Viti S. et al., 2014, *A&A*, 570, A28
 Watanabe N., Kouchi A., 2002, *ApJ*, 571, L173
 Wiesler H., Krueger P. J., Muller E., Hyne J. B., 1969, *Can. J. Chem.*, 47, 1633
 Woodney L. M., A'Hearn M. F., McMullin J., Samarasingha N., 1997, *Earth Moon Planets*, 78, 69
 Woon D. E., Dunning T. H., 1993, *J. Chem. Phys.*, 98, 1358
 Zasowski G., Kemper F., Watson D. M., Furlan E., Bohac C. J., Hull C., Green J. D., 2009, *ApJ*, 694, 459
 Zhang Z.-Y. et al., 2014, *A&A*, 367, 457
 Zvereva E. E., Shagidullin A. R., Katsyuba S. A., 2011, *J. Phys. Chem. A*, 115, 63

SUPPORTING INFORMATION

Additional Supporting Information may be found in the online version of this article:

OnlineMaterial.zip (<http://mnras.oxfordjournals.org/lookup/suppl/doi:10.1093/mnras/stu2313/-/DC1>).

Please note: Oxford University Press is not responsible for the content or functionality of any supporting materials supplied by the authors. Any queries (other than missing material) should be directed to the corresponding author for the paper.

This paper has been typeset from a $\text{\TeX}/\text{\LaTeX}$ file prepared by the author.