

Microscopic description of α , 2α , and cluster decays of 216–220Rn and 220–224R

Zhao, J.; Ebran, J.-P.; Heitz, L.; Khan, E.; Mercier, F.; Nikšić, T.; Vretenar, D.

Source / Izvornik: **Physical Review C, 2023, 107**

Journal article, Published version

Rad u časopisu, Objavljena verzija rada (izdavačev PDF)

<https://doi.org/10.1103/PhysRevC.107.034311>

Permanent link / Trajna poveznica: <https://urn.nsk.hr/urn:nbn:hr:217:862305>

Rights / Prava: [In copyright](#) / [Zaštićeno autorskim pravom.](#)

Download date / Datum preuzimanja: **2024-07-04**



Repository / Repozitorij:

[Repository of the Faculty of Science - University of Zagreb](#)



Microscopic description of α , 2α , and cluster decays of $^{216-220}\text{Rn}$ and $^{220-224}\text{Ra}$

J. Zhao¹, J.-P. Ebran², L. Heitz³, E. Khan³, F. Mercier³, T. Nikšić⁴ and D. Vretenar⁴

¹Center for Circuits and Systems, Peng Cheng Laboratory, Shenzhen 518055, China

²Université Paris-Saclay, CEA, Laboratoire Matière en Conditions Extrêmes, 91680, Bruyères-le-Châtel, France

³IJCLab, Université Paris-Saclay, CNRS/IN2P3, 91405 Orsay Cedex, France

⁴Physics Department, Faculty of Science, University of Zagreb, 10000 Zagreb, Croatia



(Received 25 November 2022; revised 3 January 2023; accepted 1 March 2023; published 17 March 2023)

α and cluster decays are analyzed for heavy nuclei located above ^{208}Pb on the chart of nuclides: $^{216-220}\text{Rn}$ and $^{220-224}\text{Ra}$, which are also candidates for observing the 2α decay mode. A microscopic theoretical approach based on relativistic energy density functionals (EDF), is used to compute axially symmetric deformation-energy surfaces as functions of quadrupole, octupole, and hexadecupole collective coordinates. Dynamical least-action paths for specific decay modes are calculated on the corresponding potential-energy surfaces. The effective collective inertia is determined using the perturbative cranking approximation, and zero-point and rotational energy corrections are included in the model. The predicted half-lives for α decay are within one order of magnitude of the experimental values. In the case of single- α emission, the nuclei considered in the present study exhibit least-action paths that differ significantly up to the scission point. The differences in α -decay lifetimes are not only driven by Q values, but also by variances of the least-action paths prior to scission. In contrast, the 2α decay mode presents very similar paths from equilibrium to scission, and the differences in lifetimes are mainly driven by the corresponding Q values. The predicted ^{14}C cluster decay half-lives are within three orders of magnitudes of the empirical values, and point to a much more complex pattern compared with the α -decay mode.

DOI: [10.1103/PhysRevC.107.034311](https://doi.org/10.1103/PhysRevC.107.034311)

I. INTRODUCTION

In a series of recent studies, a microscopic approach based on relativistic energy density functionals (EDF) has successfully been applied to the phenomenon of α radioactivity. In this framework, self-consistent calculations of potential-energy surfaces (PES), as functions of various deformation degrees of freedom, are used to predict the least-action dynamical path leading to a particular decay. Using the Wentzel-Kramers-Brillouin (WKB) approximation [1], α -decay half-lives have been analyzed in ^{104}Te , ^{108}Xn , ^{212}Po , and ^{224}Ra nuclei [2,3]. The relativistic EDF-based microscopic framework used to model α decay, has also been applied to the description of spontaneous and induced fission [4–12].

This approach has recently been used to predict a new mode of decay, where two α particles are simultaneously emitted back to back [3]. The new 2α decay mode should be verified experimentally, which raises the question of the optimal candidate nucleus that must have: (i) the shortest 2α decay lifetime, (ii) the largest branching ratio, and (iii) realistic production rates at present-day exotic beam facilities. The most obvious candidate is ^{216}Rn , which corresponds to 2α particles added to the doubly magic ^{208}Pb . Neighboring nuclei, such as ^{218}Rn , and their α -decay “parent nuclei,” for instance $^{220,222}\text{Ra}$, could also be considered.

From the theoretical point of view, it is also relevant to investigate whether the present approach is able to describe cluster decay, which is known to occur in this area of the

nuclear chart. Since the relativistic EDF-based method can be used to compute both fission and α -decay observables, the intermediate case, cluster emission, should be investigated as well. This will also provide a link with previous calculations of cluster decay based on the Gogny EDF, performed in a similar framework [13]. It should be noted, however, that the relativistic EDF-based model appears to be the only fully microscopic approach able to describe α decay in a quantitative agreement with available data. This feature could be related to the ability of relativistic EDFs to describe the formation of α cluster states in nuclei [14–21]. Especially, the relation between the formation of α clusters states and α decay has been explored in Refs. [22,23].

The aim of the present work is threefold: (i) to assess the quality of the microscopic relativistic EDF-based calculations of α emission lifetimes, by comparing with empirical values for the nuclei of interest, namely, $^{216-220}\text{Rn}$ and $^{220-224}\text{Ra}$, as well as ^{212}Po ; (ii) to explore whether the relativistic EDF approach could also predict cluster decay, and the level of agreement with data, as well as possible open questions raised by a universal microscopic description of fission, cluster, 2α and α decays; and (iii) to analyze possible 2α decays of nuclei in the region $^{208}\text{Pb} + 2\alpha = ^{216}\text{Rn}$, which should be favored as a 2α emitter candidate. On this last point, ^{216}Rn , but also its α -parent nucleus, as well as slightly more neutron-rich nuclei, will be analyzed. The aim is to identify optimal nuclei that also have large production rates, usually from a primary reaction on a uranium target.

The present study is based on calculations performed in the relativistic Hartree-Bogoliubov (RHB) framework. For a detailed review, we refer the reader to Refs. [24–26]. Self-consistent calculations of deformation-energy surfaces are performed using the DD-PC1 [27] relativistic functional and a separable finite-range pairing interaction. The potential-energy surfaces (PES) are calculated using quadrupole, octupole, and hexadecupole deformations as collective degrees of freedom. Section II describes the formalism and the details of the calculation. Predictions of α -decay half-lives for $^{216-220}\text{Rn}$ and $^{220-224}\text{Ra}$ are discussed in Sec. III. Section IV explores the symmetric 2α decay mode, and in Sec. V we analyze ^{14}C cluster emission from ^{222}Ra and ^{224}Ra . A brief summary of the principal results is included in Sec. VI.

II. RELATIVISTIC HARTREE-BOGOLIUBOV CALCULATIONS OF DECAY RATES

The process of decay by an α -particle or cluster emission is modeled along a dynamical path L , determined by minimizing the action integral [28,29],

$$S(L) = \int_{s_{\text{in}}}^{s_{\text{out}}} \frac{1}{\hbar} \sqrt{2\mathcal{M}_{\text{eff}}(s)[V_{\text{eff}}(s) - E_0]} ds, \quad (1)$$

where $\mathcal{M}_{\text{eff}}(s)$ and $V_{\text{eff}}(s)$ are the effective collective inertia and potential, respectively. E_0 is the ground-state energy of the nucleus, and the integration limits correspond to the classical inner (s_{in}) and outer turning points (s_{out}), defined by $V_{\text{eff}}(s) = E_0$.

The effective inertia is computed from the multidimensional inertia tensor \mathcal{M} [28,30–33]

$$\mathcal{M}_{\text{eff}}(s) = \sum_{ij} \mathcal{M}_{ij} \frac{dq_i}{ds} \frac{dq_j}{ds}, \quad (2)$$

where $q_i(s)$ denotes the collective coordinate as a function of the path's length. The collective inertia tensor is calculated from the self-consistent and deformation-constrained RHB solutions for the quasiparticle wave functions and energies, using the adiabatic time-dependent Hartree-Fock-Bogoliubov (ATDHFB) method [34]. In the perturbative cranking approximation, the collective inertia reads [35]

$$\mathcal{M} = \hbar^2 M_{(1)}^{-1} M_{(3)} M_{(1)}^{-1}, \quad (3)$$

where

$$[M_{(k)}]_{ij} = \sum_{\mu\nu} \frac{\langle 0 | \hat{Q}_i | \mu\nu \rangle \langle \mu\nu | \hat{Q}_j | 0 \rangle}{(E_\mu + E_\nu)^k}. \quad (4)$$

$|\mu\nu\rangle$ are two-quasiparticle states, and E_μ and E_ν the corresponding quasiparticle energies. \hat{Q}_i denotes the multipole operators that represent collective degrees of freedom. The effective collective potential V_{eff} is obtained by subtracting the vibrational zero-point energy (ZPE) from the total RHB deformation energy. Following the prescription of Refs. [32,33,36,37], the ZPE is computed using the Gaussian overlap approximation,

$$E_{\text{ZPE}} = \frac{1}{4} \text{Tr}[M_{(2)}^{-1} M_{(1)}], \quad (5)$$

In addition, the rotational energy correction (REC) is also subtracted

$$E_{\text{REC}} = \frac{\langle J^2 \rangle}{2\mathcal{I}_Y}, \quad (6)$$

where the expectation values of the angular-momentum operator are evaluated with respect to the self-consistent and deformation-constrained RHB states, and \mathcal{I}_Y is the Yoccoz moment of inertia [38] for a given multipole operator \hat{Q}_i :

$$\mathcal{I}_Y(\hat{Q}_i) = \sum_{\mu\nu} \frac{2(|\langle 0 | \hat{Q}_i | \mu\nu \rangle|^2)^2}{|\langle 0 | \hat{Q}_i | \mu\nu \rangle|^2 (E_\mu + E_\nu)}. \quad (7)$$

The REC approximation of Eq. (6) is known to be valid for large deformations [13] and replaces full angular-momentum projection which, in the case of heavy nuclei, is generally computationally prohibitive.

It should be noted that the REC was not taken into account in our previous calculations of α decay based on relativistic EDFs [2,3]. Therefore, the present results should be, in principle at least, more accurate. A typical effect of this correction is to decrease the lifetimes of α decay by about one order of magnitude. For instance, in the case of ^{224}Ra , the inclusion of the REC leads to a decrease of the α emission lifetime from 9.5 to 5.7 d. We have verified that the rotational energy correction globally improves the results in comparison with data. Therefore, in the present work, all calculations are performed by including the REC.

The microscopic self-consistent solutions of the deformation-constrained RHB equations that is, the single-quasiparticle energies and wave functions on the entire energy surface as functions of the quadrupole, octupole, and/or hexadecapole deformations, provide the microscopic input for computing the collective inertia, zero-point energy and rotational energy corrections.

In practice, the least-action path is built from the inner turning point to the scission point, whose position is determined by monitoring the integrated density distribution that is, the density distribution of the emerging fragment. As scission point, we select the point with emerging fragment mass equal to the mass of the α particle, 2α particles, or ^{14}C cluster. For the single α or cluster emission, beyond scission the configuration with two well-separated fragments becomes the lowest-energy solution, and the energy curve up to the outer turning point s_{out} can be approximated by the classical expression for two uniformly charged spheres:

$$V_{\text{eff}}(\beta_3) = e^2 \frac{Z_1 Z_2}{R} - Q, \quad (8)$$

where R represents the distance between the centers of mass of the fragments, and the second term is the experimental Q value. We use Eqs. (9) and (10) of Ref. [13] to approximate the relation between R and the octuple moment Q_{30} ,

$$Q_{30} = f_3 R^3, \quad (9)$$

with

$$f_3 = \frac{A_1 A_2 (A_1 - A_2)}{A} \frac{1}{A}, \quad (10)$$

and $\beta_{30} = 4\pi Q_{30}/3AR^3$. The corresponding effective collective mass reads

$$\mathcal{M}_{\text{eff}} = \frac{\mu}{9Q_{30}^{4/3} f_3^{2/3}}, \quad (11)$$

where $\mu = m_n A_1 A_2 / (A_1 + A_2)$ is the reduced mass of the two fragments, and m_n denotes the nucleon mass [13].

In the case of emission of two α particles, to calculate the contribution of the action from the scission point to the outer turning point s_{out} , we consider the superposition of each α -plus-nucleus Coulomb interaction, namely:

$$V_{\text{eff}}(\beta_2) = 2e^2 \frac{Z_1 Z_2}{R} - Q_{2\alpha}, \quad (12)$$

where R represents the distance between the centers of mass of the fragments (the index 1 refers to the heavy fragment, and 2 to the α particle). The approximate relation between R and the quadrupole moment is

$$Q_{20} = 2A_2 R^2. \quad (13)$$

The corresponding effective collective mass reads

$$\mathcal{M}_{\text{eff}} = \frac{\mu}{8A_2 Q_{20}}, \quad (14)$$

where $\mu = m_n A_2 / 2$ is the reduced mass of the (2α + heavy) fragments.

Therefore, the path involved in the action integral of Eq. (1) consists of the least-action path from s_{in} to scission, and the energy is approximated by the Coulomb potential from scission to s_{out} [13]. The decay half-life is calculated as $T_{1/2} = \ln 2 / (nP)$, where n is the number of assaults on the potential barrier per unit time [30–33], and P is the barrier penetration probability in the WKB approximation

$$P = \frac{1}{1 + \exp[2S(L)]}. \quad (15)$$

We choose $E_0 = 1$ MeV in Eq. (1) for the value of the collective ground-state energy. For the vibrational frequency $\hbar\omega = 1$ MeV, the corresponding value of n is $10^{20.38} \text{ s}^{-1}$.

In the present study, for the single α emission the collective space is three dimensional ($\beta_{20}, \beta_{30}, \beta_{40}$), while for the symmetric 2α emission, because of reflection symmetry, the collective space can be built from the coordinates β_{20} and β_{40} . In the case of ^{14}C emission, two models will be analyzed: (i) a two-dimensional (2D) (β_{20}, β_{30}) calculation, where the scission point is determined by a discontinuity in β_{40} , to be compared with previous Gogny EDF-based results [13] and, in the case of ^{222}Ra , (ii) a full three-dimensional (3D) ($\beta_{20}, \beta_{30}, \beta_{40}$) calculation, in which scission is determined as a point where the integrated density of the emitted fragment corresponds to 14 nucleons.

We note that the present deformation-constrained calculations are performed using a method with linear constraints that has successfully been applied to fission (see Ref. [35] for details). The Dirac-Hartree-Bogoliubov equations are solved by expanding the nucleon spinors in the basis of a 3D harmonic oscillator, with 20 oscillators shells. In addition to the particle-hole channel determined by the choice of the EDF, a separable pairing interaction of finite range [39,40] is used

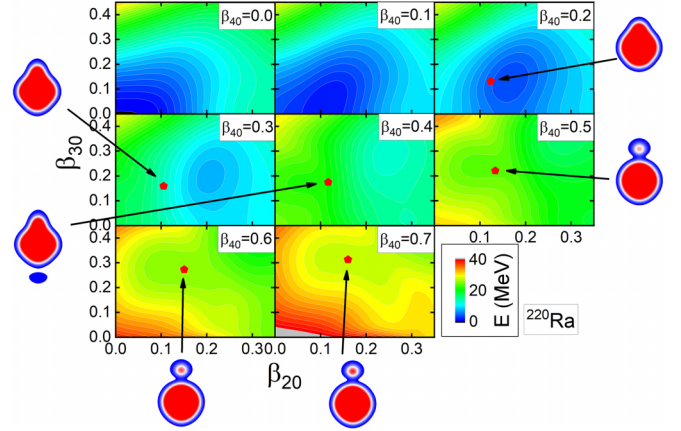
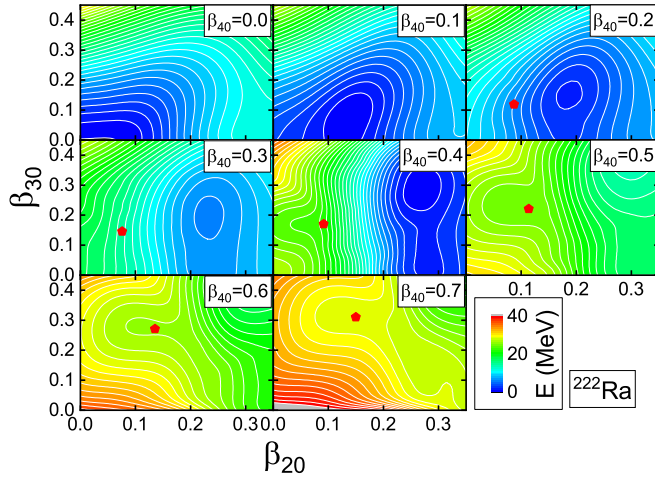


FIG. 1. Deformation-energy surface of ^{220}Ra in the axially symmetric quadrupole-octupole plane, for selected values of the hexadecapole deformation β_{40} . Calculations are performed using the RHB model based on the DD-PC1 functional and a separable pairing interaction. Contours join points on the surface with the same energy, and red circles indicate the points on the dynamical (least-action) path for α emission. The insets display the intrinsic nucleon densities at selected points on the dynamical path.

that reproduces the pairing gap in nuclear matter as calculated with the DIS parametrization of the Gogny force [40,41]. As in Ref. [3], we have fine-tuned the neutron and proton pairing strengths to reproduce the empirical pairing gaps of the isotope ^{224}Ra . Compared with the original values, this corresponds to an increase of the neutron and proton pairing strengths by 9% and 12%, respectively. This modification is consistent with the conclusions of the recent global study of the separable pairing interaction, when used with relativistic energy density functionals [42,43]. We have used the modified pairing strength parameters for all the Ra and Rn nuclei considered in the present work.

III. α DECAY

In the case of α decay, the importance of including at least three deformation degrees of freedom has been shown in our previous calculations [2,3]. The quadrupole degree of freedom corresponds to the elongation of the nucleus, while octupole deformations are essential to model the formation of an α particle on the surface of a nucleus. The formation of a neck between the α particle and the daughter nucleus before emission, gives rise to a more pronounced hexadecapole deformation. For the α decay of ^{220}Ra , Fig. 1 displays several projections of the PES in the axially symmetric quadrupole-octupole plane, for different values of the hexadecapole deformation parameter β_{40} . The least-action path remains close to the energy minimum of the deformation surfaces, with some deviations due to the effect of the collective inertia. Along the path from the inner (s_{in}) turning point to the scission point, the value of β_{20} increases slightly from 0.12 to 0.16. The increase of β_{30} is more pronounced, from 0.12 to 0.32, and even more so for β_{40} from 0.2 to 0.7. Hence, in the case of α decay from ^{220}Ra , the major deformation degrees of freedom at work are the octupole and hexadecapole ones.

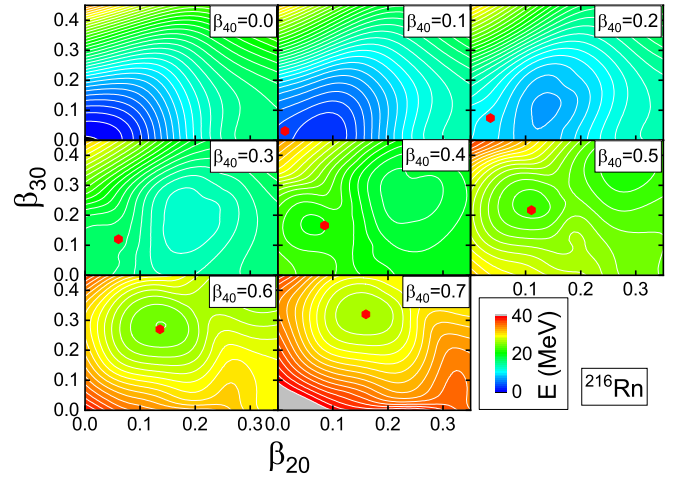
FIG. 2. Same as in the caption to Fig. 1 but for ^{222}Ra .

The scission point on the $(\beta_{20}, \beta_{30}, \beta_{40})$ surface is found at $(0.16, 0.31, 0.68)$, and the least-action integral up to this point has a value of 8.10, whereas the one from scission to the outer turning point (s_{out}) is 14.18. The predicted half-life is 60 ms, to be compared with the experimental value of 18 ms.

It is interesting to compare the predictions for the half-lives of α decay of ^{220}Ra and ^{212}Po . In the latter case, the scission point is very close to the one of ^{220}Ra : $(0.16, 0.33, 0.70)$. The least-action integral calculated from the inner turning point to scission is 6.58, and 9.46 from scission to the outer turning point. We note that the action up to the scission point is smaller than in the case of ^{220}Ra . This is due to the almost spherical shape of the equilibrium minimum of ^{212}Po : the least-action path starts from a small β_{20} value, close to zero, because of the vicinity of the doubly magic nucleus ^{208}Pb . The difference between the calculated least-action integrals is then magnified by the well-known Q -value effect after the scission point, making the total action much smaller in the case of ^{212}Po . About 25% of the difference in the total action between ^{220}Ra and ^{212}Po is due to nuclear dynamics before the scission point, rather than to the Q -value effect. The correct description of the dynamical path before the scission point is crucial, as demonstrated by the predicted half-life: 0.2 μs for ^{212}Po , to be compared with the experimental value of 0.3 μs .

Figure 2 illustrates the calculation of the α decay of ^{222}Ra . The evolution of the path is similar to the one of ^{220}Ra . The scission point is obtained at $(0.15, 0.31, 0.68)$ on the $(\beta_{20}, \beta_{30}, \beta_{40})$ surface, which is almost identical to the case of ^{220}Ra . The least-action integral up to the scission point is 9.03, and the one in the outer region starting from this point is 17.02. The corresponding half-life is 122 s, in comparison to the experimental value 38 s. Again, a correct description of the least-action path prior to the scission point is crucial to predict a realistic half-life within one order of magnitude of the empirical value.

For the α decay of ^{216}Rn and ^{218}Rn , in Figs. 3 and 4, respectively, we display the corresponding projections of the 3D deformation-energy surfaces. The case of ^{216}Rn is similar to the one of ^{212}Po , with a starting point of the least-action path close to sphericity. The scission point is found

FIG. 3. Same as in the caption to Fig. 1 but for ^{216}Rn .

at $(0.16, 0.32, 0.70)$ on the $(\beta_{20}, \beta_{30}, \beta_{40})$ surface, the action integral up to the scission point is 8.12, and the one in the outer region 11.83. The predicted half-life is 185 μs , and the experimental one is 45 μs . For ^{218}Rn , the PES is comparable to those of the Ra nuclei discussed above. The scission point is at $(0.16, 0.32, 0.70)$, the action up to the scission point is 8.58, and the one from this point is 14.32. Here, despite the difference in the dynamical paths before the scission point (cf. Figs. 3 and 4), the calculated actions before the scission point are close, although a bit larger in the case of ^{218}Rn . After this point, because of the smaller Q value, the action is also larger in the case of ^{218}Rn . The calculated half-life of 35 ms is in agreement with the experimental value.

The case of ^{220}Rn is close to the ^{218}Rn one, with similar PES and small variations on the dynamical path. The scission point is at $(0.12, 0.32, 0.70)$, the action up to the scission point is 8.03, and the one from this point is 17.48. This larger value, compared with the previous $^{216, 218}\text{Rn}$ cases, is due to a smaller Q value. The predicted half-life is 40.8 s, and the experimental one is 55.6 s.

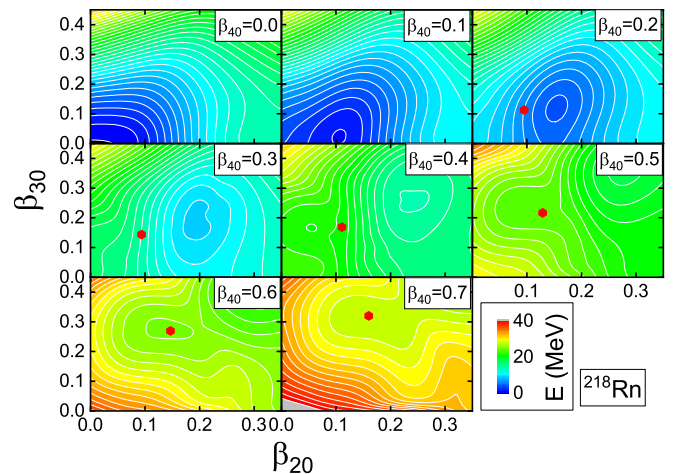
FIG. 4. Same as in the caption to Fig. 1 but for ^{218}Rn .

TABLE I. Experimental and theoretical values for the α -emission half-lives, predicted 2α symmetric emission half-lives, and the corresponding branching ratios. BR denotes the \log_{10} of the branching ratio.

	T_{expt}	T_{α}	$\log_{10}(T_{2\alpha}[\text{s}])$	BR
^{212}Po	0.3 μs	0.2 μs	17.23	-23.8
^{216}Rn	45 μs	185 μs	2.67	-6.4
^{218}Rn	35 ms	35 ms	5.06	-6.5
^{220}Rn	55.6 s	40.8 s	8.04	-6.4
^{220}Ra	18 ms	60 ms	6.1	-7.3
^{222}Ra	38 s	122 s	9.23	-7.1
^{224}Ra	3.6 d	5.7 d	13.03	-7.3

Table I summarizes the α -decay half-lives calculated using the present method. All the theoretical values are of the same order of magnitude as the experimental ones. This result demonstrates the validity of the microscopic approach, which explicitly takes into account various important effects in a consistent framework: pairing, collective inertia, energy corrections, etc. It should also be noted that there are no free parameters specifically adjusted to reproduce the empirical half-lives. The only input is a universal energy density functional, and the pairing interaction.

IV. SYMMETRIC TWO- α DECAY

The simultaneous symmetric emission of two α particles is a new mode of decay which has been predicted recently [3]. In this process, the two α particles are emitted back to back, and the least-action path is calculated on the surface of quadrupole and hexadecapole deformations. The octupole degree of freedom plays no role here. Considering the condition of positive $Q_{2\alpha}$ value, almost all of the one- α emitter nuclei are predicted to be also 2α emitters, with a few exceptions [3]. However, the branching ratio for this mode is generally very small, about 10^{-8} in ^{224}Ra . This is nevertheless of the same order of magnitude as the branching ratios for cluster radioactivity, which has already been detected. Therefore, it is necessary to focus on the best 2α -decay candidates for a possible measurement. Figure 5 displays the $Q_{2\alpha}$ values on the nuclear chart, for nuclei exhibiting positive $Q_{2\alpha}$ values, where $Q_{2\alpha}$ is defined by

$$Q_{2\alpha} = Q_{\alpha 1} + Q_{\alpha 2} + \Delta E. \quad (16)$$

$Q_{\alpha 1(2)}$ are the Q values of the daughter and granddaughter nuclei for single α decay, determined from experimental masses [44]. ΔE is the difference between the sum of the excitation energies of the daughter and granddaughter nuclei in the sequence of single α decays, and the excitation energy of the granddaughter nucleus in the 2α decay. We consider, for simplicity, α or 2α transitions involving only the ground states of the daughter or granddaughter nuclei (that is, $\Delta E = 0$). Considering the empirical $Q_{2\alpha}$ values in Fig. 5, it appears that the most favored region for 2α decay is located in a narrow strip north-east of ^{208}Pb . The optimal experimental candidate should be as close as possible to this region, with an intensity of production large enough to detect a few

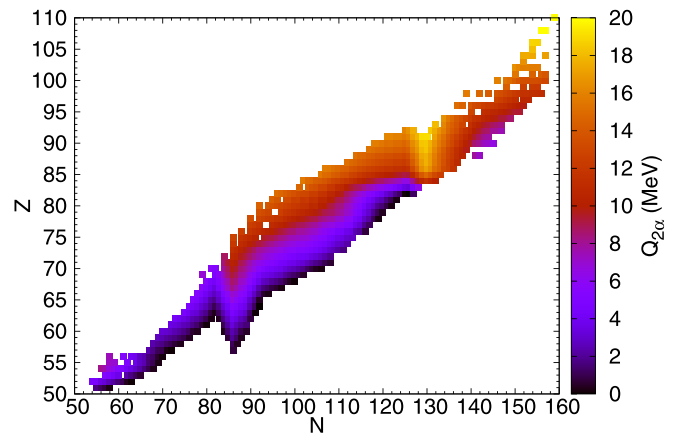


FIG. 5. $N > 50$ and $Z > 50$ nuclides with positive $Q_{2\alpha}$ values.

possible 2α decays. Unstable nuclei around this region are best produced from a uranium primary beam. Taking into account these constraints, some of the best candidates could be ^{216}Rn , which corresponds to $^{208}\text{Pb} + 2\alpha$, followed by ^{218}Rn , ^{220}Ra , ^{222}Ra , ^{220}Rn , and ^{224}Ra . We note that nuclei around ^{218}Th or ^{222}U are even more favorable when considering $Q_{2\alpha}$ values. However, their current production rate is too low to perform dedicated experiments on the 2α decay mode.

In Figs. 6–9 we show the RHB deformation-energy surfaces in the quadrupole-hexadecapole plane for the nuclei $^{220,222}\text{Ra}$ and $^{216,218}\text{Rn}$. In these four cases, the least-action

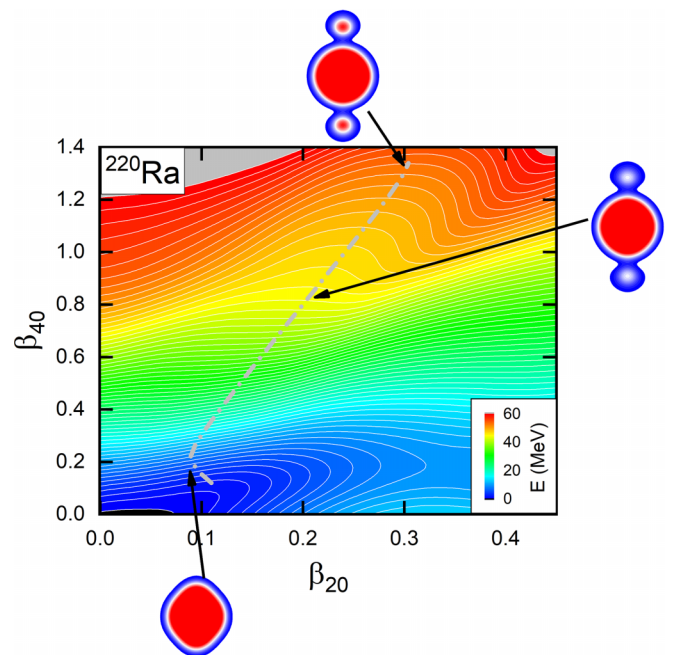
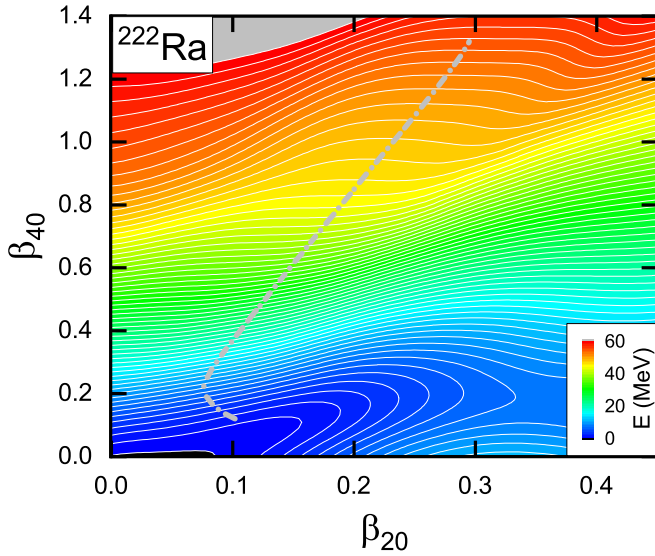
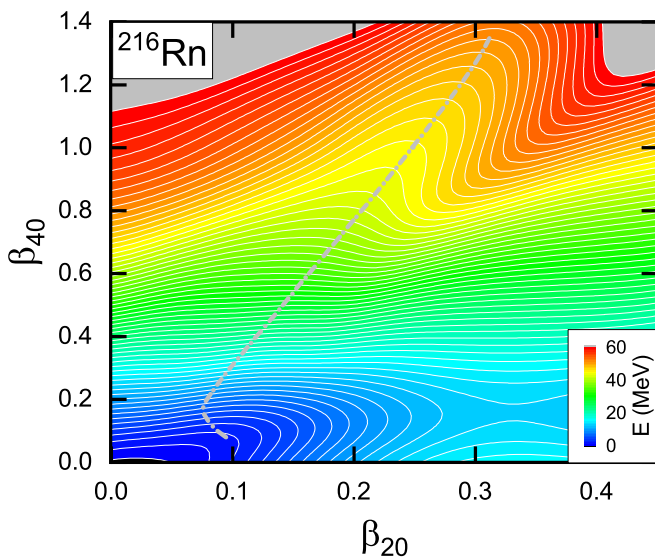
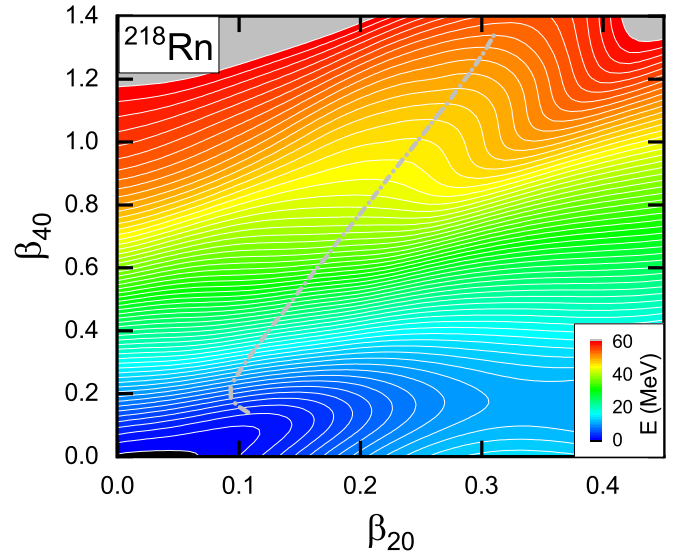


FIG. 6. Reflection symmetric deformation-energy surface of ^{220}Ra in the quadrupole-hexadecapole axially symmetric plane. Calculations have been performed using the RHB model based on the DD-PC1 functional, and a separable pairing interaction. The gray curve denotes the dynamical (least-action) path for 2α emission from the equilibrium deformation to scission. The insets display the intrinsic nucleon densities at selected points on the dynamical path.

FIG. 7. Same as in the caption to Fig. 6 but for ^{222}Ra .

paths for the symmetric 2α emission are very similar: a slight initial decrease of β_{20} , followed by a linear increase of both β_{20} and β_{40} , leading to very large values of the hexadecapole deformation parameter at scission. The scission point is located at $\beta_{20} = 0.30$ and $\beta_{40} = 1.34$ in the case of ^{220}Ra , and almost the same for the other three nuclei (less than 2% change in the deformation parameters). Correspondingly, the least-action integrals up to the scission point are also rather similar: 13.93, 14.36, 12.70, and 12.61 for $^{220,222}\text{Ra}$ and $^{216,218}\text{Rn}$, respectively. However, it is the $Q_{2\alpha}$ values that play the main role in differentiating the 2α decay rates in these nuclei. The least-action integrals from the scission point to the outer turning points are 16.76, 19.92, 14.02, and 16.87 for $^{220,222}\text{Ra}$ and $^{216,218}\text{Rn}$, respectively. The corresponding half-lives, listed in Table I, can directly be correlated to these values of the action integral: the shortest half-life is calculated

FIG. 8. Same as in the caption to Fig. 6 but for ^{216}Rn .FIG. 9. Same as in the caption to Fig. 6 but for ^{218}Rn .

for ^{216}Rn , whereas the longest one is for ^{222}Ra . The above conclusions also apply to the case of ^{220}Rn with an action before the scission point of 13.01, the one after the scission point being 19.90.

The predicted 2α decay branching ratios (BRs) listed in Table I, show that the most unfavorable case for this mode appears to be ^{212}Po . This could be understood because of the $^{208}\text{Pb} + 1\alpha$ configuration of this nucleus. In contrast, ^{216}Rn , which corresponds to $^{208}\text{Pb} + 2\alpha$, is predicted to be the optimal case for simultaneous symmetric 2α decay. However, neighboring nuclei such as $^{218,220}\text{Rn}$ or $^{220-224}\text{Ra}$ also exhibit BRs that do not differ by more than an order of magnitude. This is due to the simultaneous increase of the action integrals in both the α and 2α channels, when compared with ^{216}Rn . In summary, $^{216-220}\text{Rn}$ and $^{220-224}\text{Ra}$ should be considered as candidates for an experimental search of the 2α decay mode.

It would also be interesting to consider additional geometric degrees of freedom, such as triaxiality, but this is beyond the scope of this work and hardly feasible from a computational point of view. However, the inclusion of additional degrees of freedom would generally decrease the action calculated along the decay path and, hence, the predicted half-lives for the two- α decay. The half-lives calculated in the present study should be considered as upper limits for the two- α decay mode.

Three-body effects are also relevant for two-particle, e.g., two-proton decay. However, it is difficult to draw a direct analogy between two-proton and two- α decays, because preformation of α clusters has a large impact on the decay probability which, of course, is not the case for two-proton decay. In the present calculation, all possible interactions are considered before the scission point, because the least action path is calculated starting from nucleonic degree of freedom, displaying the emergence of the two α along this path. After the scission point, each α -nucleus interaction is taken into account, while the interaction between the two α is neglected. This corresponds to a simplified case of a full three-body

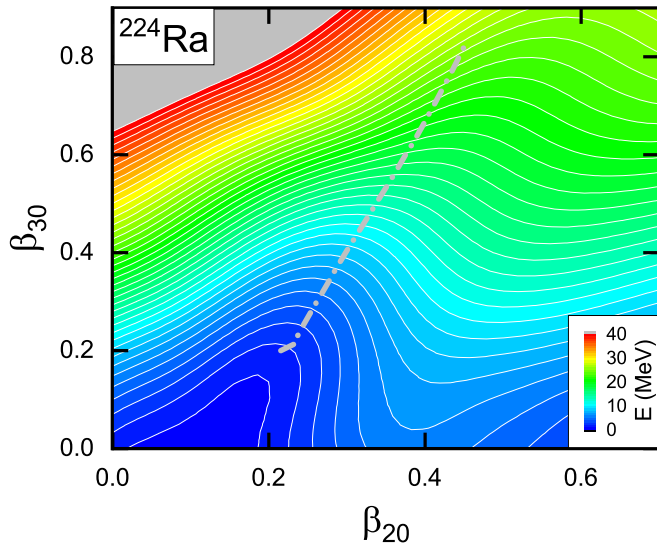


FIG. 10. Reflection symmetric deformation-energy surface of ^{224}Ra in the quadrupole-octupole axially symmetric plane. The gray curve denotes the dynamical (least-action) path for ^{14}C emission from equilibrium deformation to scission.

treatment. Translated in the description of two-proton decay, this would rather correspond to the so-called direct emission model [45], which yields a correct order of magnitude for the decay half-lives [46], although only the full three-body treatment provides the correct momentum density distribution of the emitted protons.

V. CLUSTER DECAY

As an example of cluster decay, we consider the emission of ^{14}C from ^{222}Ra and ^{224}Ra . Cluster radioactivity was previously explored in a study based on least-action calculations with the Gogny energy density functional [13]. Figure 10 displays the reflection asymmetric deformation-energy surface of ^{224}Ra in the quadrupole-octupole axially symmetric plane. The gray curve denotes the dynamical least-action path for ^{14}C emission from equilibrium deformation to scission. The scission point is located at $(\beta_{20} = 0.45, \beta_{30} = 0.82)$. The corresponding contribution to the dimensionless action integral (1) is 13.97, and from the scission to the outer turning point the action is 27.95. The corresponding cluster half-life $\log_{10}(T_{14\text{C}} [\text{s}]) = 15.87$, is in excellent agreement with the experimental value $\log_{10}(T_{\text{expt}} [\text{s}]) = 15.86$. In a similar calculation with the Gogny functional, the value $\log_{10}(T_{14\text{C}} [\text{s}]) = 15.06$ (cf. Fig. 13 of Ref. [13]) was obtained for the ^{14}C decay half-life of ^{224}Ra .

In Fig. 11 we show the corresponding deformation-energy surface of ^{222}Ra , and the least action path followed until the scission point, located at $(\beta_{20} = 0.48, \beta_{30} = 0.79)$, close to the value obtained for ^{224}Ra . The corresponding contribution to the dimensionless action (1) is 15.28 up to the scission point, and 24.04 from the scission point to the outer turning point. The predicted cluster half-life is $\log_{10}(T_{14\text{C}} [\text{s}]) = 13.61$, to be compared with the experimental value $\log_{10}(T_{\text{expt}} [\text{s}]) = 11.01$. This appears to be on the same

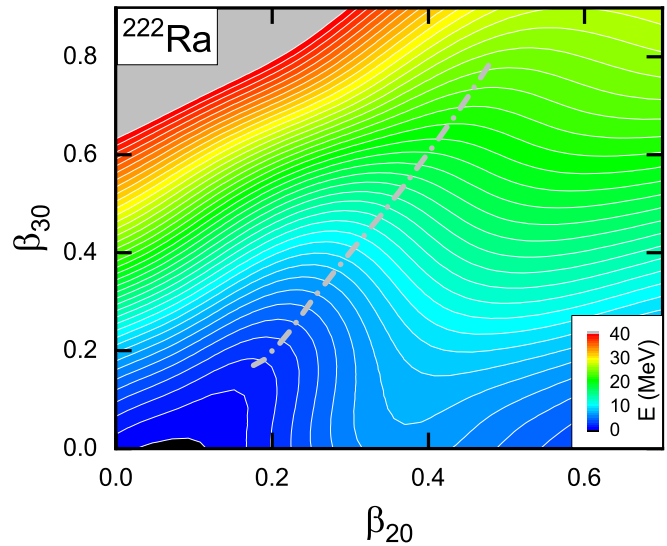


FIG. 11. Same as in the caption to Fig. 10 but for ^{222}Ra .

level of agreement with experiment as the result obtained using the Gogny functional: $\log_{10}(T_{14\text{C}} [\text{s}]) = 8.9$ [13]. The energy surfaces and the least-action paths for ^{14}C emission are very similar for ^{222}Ra and ^{224}Ra . A Q value that is 3 MeV larger in the case of ^{222}Ra , explains its smaller action from the scission point to emission, and correspondingly its shorter cluster emission half-life.

Just as in the case of α decay, the hexadecupole degree of freedom could also play an important role for heavier cluster emission, such as ^{14}C . We have thus carried out 3D hexadecupole-octupole-quadrupole calculations of ^{14}C emission from ^{222}Ra . Figure 12 displays the projections of

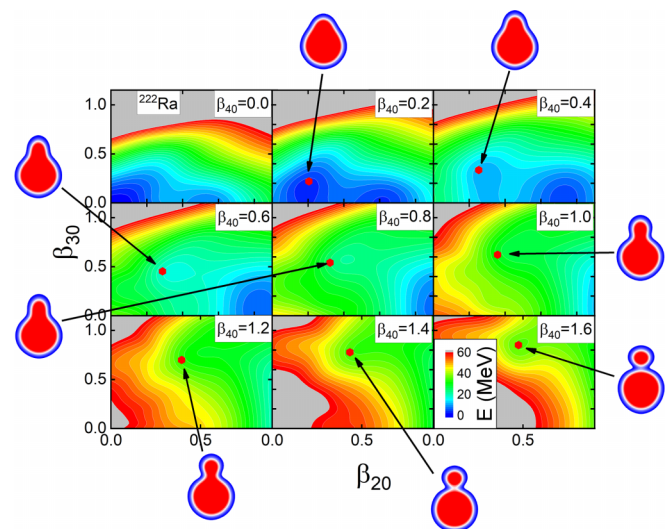


FIG. 12. Deformation-energy surface of ^{222}Ra in the quadrupole-octupole axially symmetric plane, for selected values of the hexadecupole deformation β_{40} . Contours join points on the surface with the same energy and red circles indicate the points on the dynamical (least-action) path for ^{14}C emission. The insets display the intrinsic nucleon densities at selected points on the dynamical path.

TABLE II. Experimental, 2D, and 3D calculated $\log_{10} T$ [s] of the half-lives for ^{14}C cluster emission in the cases ^{222}Ra and ^{224}Ra .

	T_{expt}	T_C^{2D}	T_C^{3D}
^{222}Ra	11.01	13.61	14.82
^{224}Ra	15.86	15.87	

the deformation-energy surface onto the quadrupole-octupole plane, for several values of the hexadecapole parameter β_{40} . Compared with α emission, the deformation parameters reach much larger values: the scission point on the surface (β_{20} , β_{30} , β_{40}) is at (0.49, 0.87, 1.66). The least-action integral up to the scission point is 18.24, and the one from the scission point to the outer turning point is 22.48. The predicted half-life is $\log_{10}(T_{^{14}\text{C}} [\text{s}]) = 14.82$. Hence, the inclusion of the hexadecapole degree of freedom produces a limited effect, with an increase of about one order of magnitude for the half-life. This increase is mainly due to the different locations of the scission point in 2D and 3D calculations.

In the case of heavier cluster emission, a better agreement with data could possibly be obtained by improving the treatment of collective inertia. It would be interesting to explore the effect of the perturbative and nonperturbative cranking approximations for the multidimensional inertia tensor, on the calculated half-lives for cluster decay. However, such an analysis is numerically rather involved and beyond the scope of the present study. Table II summarizes the predicted ^{14}C half-lives, and Fig. 13 presents an overview of the theoretical results for the half-lives of $^{216-220}\text{Rn}$, $^{220-224}\text{Ra}$ and ^{212}Po , in comparison with available data. The overall good agreement with the data, especially in the α -decay case, shows that the present approach provides a consistent microscopic framework for calculating α and cluster emission lifetimes, taking explicitly into account the dynamical path on a multidimensional deformation-energy surface, the effective collective mass, and the pairing interaction.

VI. SUMMARY

α , 2α , and ^{14}C spontaneous emissions from heavy nuclei have been explored using a microscopic framework, based on the RHB model with the DD-PC1 functional and a separable pairing force. The corresponding 3D deformation-energy surfaces (quadrupole, octupole, and hexadecapole collective degrees of freedom) enable the calculation of least-action integrals along dynamical paths. The predicted half-lives for

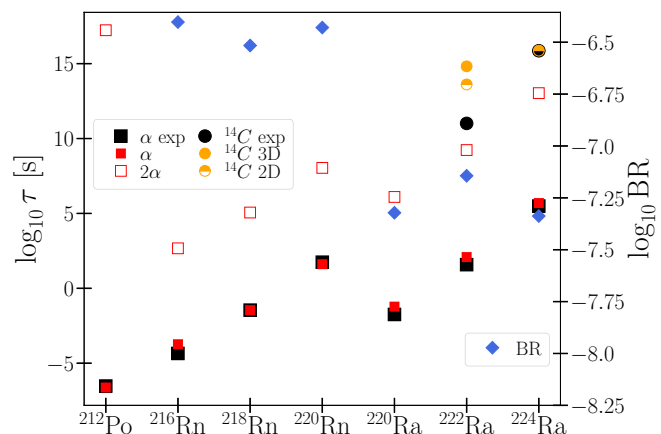


FIG. 13. Theoretical results for the α , 2α and cluster decay half-lives of $^{216-220}\text{Rn}$, $^{220-224}\text{Ra}$ and ^{212}Po , in comparison with available experimental values.

α decay are within one order of magnitude of the experimental values. The predictions for heavier cluster emission deviate from the experimental values by one to four orders of magnitude. This may point to a possible improvement in the calculation of the effective collective inertia in the latter case.

Two main effects impact the decay half-life: the dynamical path from the inner turning point up to the scission point and, for the part of the path beyond the scission point, the Q value of the transition. The relative importance of these two effects has been analyzed. 2α symmetric decay has been predicted within the same framework. All nuclei considered in the present study are also predicted to be 2α emitters. The corresponding branching ratio is more favorable for the Rn isotopes, but the Ra nuclei appear also as good candidates for the experimental observation of this rare decay mode. This has been confirmed in a recent phenomenological study of the double α -decay half-life [47].

ACKNOWLEDGMENTS

This work has been supported in part by the QuantiXLie Centre of Excellence, a project co-financed by the Croatian Government and European Union through the European Regional Development Fund - the Competitiveness and Cohesion Operational Programme (KK.01.1.1.01), and by the Institut Universitaire de France. J.Z. acknowledges support by the National Natural Science Foundation of China under Grants No. 12005107 and No. 11790325.

- [1] D. S. Delion, *Theory of Particle and Cluster Emission*, Lecture Notes in Physics, Vol. 819 (Springer, Heidelberg, 2010), p. 1.
- [2] F. Mercier, J. Zhao, R.-D. Lasserri, J. P. Ebran, E. Khan, T. Nikšić, and D. Vretenar, *Phys. Rev. C* **102**, 011301(R) (2020).
- [3] F. Mercier, J. Zhao, J. P. Ebran, E. Khan, T. Nikšić, and D. Vretenar, *Phys. Rev. Lett.* **127**, 012501 (2021).

- [4] J. Zhao, B.-N. Lu, T. Nikšić, D. Vretenar, and S.-G. Zhou, *Phys. Rev. C* **93**, 044315 (2016).
- [5] H. Tao, J. Zhao, Z. P. Li, T. Nikšić, and D. Vretenar, *Phys. Rev. C* **96**, 024319 (2017).
- [6] J. Zhao, T. Nikšić, D. Vretenar, and S.-G. Zhou, *Phys. Rev. C* **99**, 014618 (2019).
- [7] J. Zhao, J. Xiang, Z.-P. Li, T. Nikšić, D. Vretenar, and S.-G. Zhou, *Phys. Rev. C* **99**, 054613 (2019).

- [8] J. Zhao, T. Nikšić, D. Vretenar, and S.-G. Zhou, *Phys. Rev. C* **101**, 064605 (2020).
- [9] J. Zhao, T. Nikšić, and D. Vretenar, *Phys. Rev. C* **104**, 044612 (2021).
- [10] J. Zhao, T. Nikšić, and D. Vretenar, *Phys. Rev. C* **105**, 054604 (2022).
- [11] Z. X. Ren, J. Zhao, D. Vretenar, T. Nikšić, P. W. Zhao, and J. Meng, *Phys. Rev. C* **105**, 044313 (2022).
- [12] Z. X. Ren, D. Vretenar, T. Nikšić, P. W. Zhao, J. Zhao, and J. Meng, *Phys. Rev. Lett.* **128**, 172501 (2022).
- [13] M. Warda and L. M. Robledo, *Phys. Rev. C* **84**, 044608 (2011).
- [14] J. P. Ebran, E. Khan, T. Nikšić, and D. Vretenar, *Nature (London)* **487**, 341 (2012).
- [15] J. P. Ebran, E. Khan, T. Nikšić, and D. Vretenar, *Phys. Rev. C* **87**, 044307 (2013).
- [16] J. P. Ebran, E. Khan, T. Nikšić, and D. Vretenar, *Phys. Rev. C* **90**, 054329 (2014).
- [17] J. P. Ebran, E. Khan, T. Nikšić, and D. Vretenar, *Phys. Rev. C* **89**, 031303(R) (2014).
- [18] P. W. Zhao, N. Itagaki, and J. Meng, *Phys. Rev. Lett.* **115**, 022501 (2015).
- [19] E. F. Zhou, J. M. Yao, Z. P. Li *et al.*, *Phys. Lett. B* **753**, 227 (2016).
- [20] P. Marević, J. P. Ebran, E. Khan, T. Nikšić, and D. Vretenar, *Phys. Rev. C* **97**, 024334 (2018).
- [21] P. Marević, J. P. Ebran, E. Khan, T. Nikšić, and D. Vretenar, *Phys. Rev. C* **99**, 034317 (2019).
- [22] J. P. Ebran, E. Khan, R.-D. Lasserri, and D. Vretenar, *Phys. Rev. C* **97**, 061301(R) (2018).
- [23] J. P. Ebran, E. Khan, and R.-D. Lasserri, *J. Phys. G* **48**, 025106 (2021).
- [24] D. Vretenar, A. V. Afanasjev, G. A. Lalazissis, and P. Ring, *Phys. Rep.* **409**, 101 (2005).
- [25] J. Meng, *Relativistic Density Functional for Nuclear Structure* (World Scientific, Singapore, 2016).
- [26] J. P. Ebran, *Energy Density Functional Methods for Atomic Nuclei* (IOP Publishing, Bristol, 2019).
- [27] T. Nikšić, D. Vretenar, and P. Ring, *Phys. Rev. C* **78**, 034318 (2008).
- [28] M. Brack, J. Damgaard, A. S. Jensen, H. C. Pauli, V. M. Strutinsky, and C. Y. Wong, *Rev. Mod. Phys.* **44**, 320 (1972).
- [29] T. Ledergerber and H.-C. Pauli, *Nucl. Phys. A* **207**, 1 (1973).
- [30] A. Baran, *Phys. Lett. B* **76**, 8 (1978).
- [31] A. Baran, K. Pomorski, A. Lukasiak, and A. Sobiczewski, *Nucl. Phys. A* **361**, 83 (1981).
- [32] J. Sadhukhan, K. Mazurek, A. Baran, J. Dobaczewski, W. Nazarewicz, and J. A. Sheikh, *Phys. Rev. C* **88**, 064314 (2013).
- [33] J. Sadhukhan, J. Dobaczewski, W. Nazarewicz, J. A. Sheikh, and A. Baran, *Phys. Rev. C* **90**, 061304(R) (2014).
- [34] A. Baran, J. A. Sheikh, J. Dobaczewski, W. Nazarewicz, and A. Staszczak, *Phys. Rev. C* **84**, 054321 (2011).
- [35] J. Zhao, B.-N. Lu, T. Nikšić, and D. Vretenar, *Phys. Rev. C* **92**, 064315 (2015).
- [36] A. Staszczak, A. Baran, and W. Nazarewicz, *Phys. Rev. C* **87**, 024320 (2013).
- [37] A. Baran, A. Staszczak, J. Dobaczewski, and W. Nazarewicz, *Int. J. Mod. Phys. E* **16**, 443 (2007).
- [38] J. L. Egido and L. M. Robledo, *Lect. Notes Phys.* **641**, 269 (2004).
- [39] T. Duguet, *Phys. Rev. C* **69**, 054317 (2004).
- [40] Y. Tian, Z. Y. Ma, and P. Ring, *Phys. Lett. B* **676**, 44 (2009).
- [41] J.-F. Berger, M. Girod, and D. Gogny, *Comput. Phys. Commun.* **63**, 365 (1991).
- [42] L. J. Wang, B. Y. Sun, J. M. Dong, and W. H. Long, *Phys. Rev. C* **87**, 054331 (2013).
- [43] A. V. Afanasjev and O. Abdurazakov, *Phys. Rev. C* **88**, 014320 (2013).
- [44] A. H. Wapstra, G. Audi, and C. Thibault, *Nucl. Phys. A* **729**, 129 (2003).
- [45] M. Pfützner, M. Karny, L. V. Grigorenko, and K. Riisager, *Rev. Mod. Phys.* **84**, 567 (2012).
- [46] M. Pfützner, *Phys. Scr.* **T152**, 014014 (2013).
- [47] V. Yu. Denisov, *Phys. Lett. B* **835**, 137569 (2022).