

# Bankruptcy risk model and empirical tests

---

**Podobnik, Boris; Horvatić, Davor; Petersen, Alexander M.; Urošević, Branko; Stanley, H. Eugene**

*Source / Izvornik:* **Proceedings of the National Academy of Sciences of the United States of America, 2010, 107, 18325 - 18330**

**Journal article, Published version**

**Rad u časopisu, Objavljena verzija rada (izdavačev PDF)**

<https://doi.org/10.1073/pnas.1011942107>

*Permanent link / Trajna poveznica:* <https://um.nsk.hr/um:nbn:hr:217:744656>

*Rights / Prava:* [In copyright](#)/[Zaštićeno autorskim pravom.](#)

*Download date / Datum preuzimanja:* **2024-07-26**



*Repository / Repozitorij:*

[Repository of the Faculty of Science - University of Zagreb](#)



# Bankruptcy risk model and empirical tests

Boris Podobnik<sup>a,b,c,1</sup>, Davor Horvatic<sup>d</sup>, Alexander M. Petersen<sup>a</sup>, Branko Urošević<sup>e</sup>, and H. Eugene Stanley<sup>a,1</sup>

<sup>a</sup>Center for Polymer Studies and Department of Physics, Boston University, Boston, MA 02215; <sup>b</sup>Faculty of Civil Engineering, University of Rijeka, 51 000 Rijeka, Croatia; <sup>c</sup>Faculty of Economics, University of Ljubljana, 1000 Ljubljana, Slovenia; <sup>d</sup>Faculty of Science, University of Zagreb, 10 000 Zagreb, Croatia; and <sup>e</sup>Faculty of Economics, University of Belgrade, 11 000 Belgrade, Serbia

Contributed by H. Eugene Stanley, August 18, 2010 (sent for review May 6, 2010)

We analyze the size dependence and temporal stability of firm bankruptcy risk in the US economy by applying Zipf scaling techniques. We focus on a single risk factor—the debt-to-asset ratio  $R$ —in order to study the stability of the Zipf distribution of  $R$  over time. We find that the Zipf exponent increases during market crashes, implying that firms go bankrupt with larger values of  $R$ . Based on the Zipf analysis, we employ Bayes's theorem and relate the conditional probability that a bankrupt firm has a ratio  $R$  with the conditional probability of bankruptcy for a firm with a given  $R$  value. For 2,737 bankrupt firms, we demonstrate size dependence in assets change during the bankruptcy proceedings. Prepetition firm assets and petition firm assets follow Zipf distributions but with different exponents, meaning that firms with smaller assets adjust their assets more than firms with larger assets during the bankruptcy process. We compare bankrupt firms with nonbankrupt firms by analyzing the assets and liabilities of two large subsets of the US economy: 2,545 Nasdaq members and 1,680 New York Stock Exchange (NYSE) members. We find that both assets and liabilities follow a Pareto distribution. The finding is not a trivial consequence of the Zipf scaling relationship of firm size quantified by employees—although the market capitalization of Nasdaq stocks follows a Pareto distribution, the same distribution does not describe NYSE stocks. We propose a coupled Simon model that simultaneously evolves both assets and debt with the possibility of bankruptcy, and we also consider the possibility of firm mergers.

economic sciences | econophysics | finance

Complex systems are commonly coupled together and therefore should be considered and modeled as interdependent. It is important to study the conditions of interaction which may lead to mutual failure, the indicators of such failure, and the behavior of the indicators in times of crisis. As an indicator of economic failure, default risk is defined as the probability that a borrower cannot meet his or her financial obligations, i.e., cannot make principal and/or interest payments (1, 2). Accordingly, it is important to better understand default risk (1–12) and its relation to firm growth (13–17), and how they behave in times of crisis.

We find that book values of assets and debt of the US companies that filed for bankruptcy in the past 20 y follow a Zipf scaling (power-law) distribution. The same is true for the values of assets and debt of nonbankrupt firms comprising the Nasdaq. We focus our attention on a single risk indicator, the debt-to-asset ratio  $R$ , in order to analyze stability of the scaling exponent or establish cross-over regions. In order to capture Pareto and Zipf laws, the literature has typically focused on a single Simon model (13, 14, 16, 17) describing a single dynamic system which does not interact with others. We model the growth of debt and asset values using two dependent (coupled) Simon models with two parameters only, bankruptcy rate and another parameter controlling debt-to-asset ratio. The Zipf law scaling predictions of the coupled Simon model are consistent with our empirical findings.

## Data Analyzed

Our dataset consists of medium-size and large US companies that filed for bankruptcy protection in the period 1990–2009. We obtain our data from New Generation Research, Inc., which pro-

vides one of the most comprehensive bankruptcy datasets currently available on the web. There is also a bankruptcy dataset available at <http://bdp.law.harvard.edu/fellows.cfm>, but with smaller firms and no debt data. Our dataset includes data on 2,737 public and private firms. The book value of firm assets in the database ranges from 50 million to almost 700 billion US dollars.

i. For each firm in our sample, we know the prepetition book value of firm assets  $A_a$  and the effective date of bankruptcy. From the court petition documents we find the petition book value of firm assets  $A_b$ , as well as book value of total debt,  $D_b$ . As an example, Lehman Brothers filed a petition on September 15, 2008, listing the debt  $D_b$  and assets  $A_b$  on May 31, 2008. Thus,  $A_b$ ,  $A_a$ , and  $D_b$  quantify the debtor's condition before declaring bankruptcy. We are able to obtain  $A_b$  and debt  $D_b$  for 462 firms. Note that refs. 5, 6, and 12 studied 53, 105, and 585 bankrupt firms, respectively. There is often a substantial change in the debt and assets of a company in the time period preceding bankruptcy. Hence, for each firm, we calculate the debt-to-assets (leverage ratio)

$$R \equiv D_b/A_b \quad [1]$$

from the total debt  $D_b$  and assets  $A_b$  estimated simultaneously. Note that economics has a parallel treatment, known as Tobin's  $Q$  theory of investment which also focuses on a single factor,  $Q$  (18).

In the literature on ratio analysis (4, 6, 8), multiple financial ratios are used for predicting probability of default, such as the ratio of total liabilities to total assets. Adding more factors would likely improve the predictive power of the model, so we consider only one risk factor, namely the debt-to-assets ratio  $R$  which captures the level of company indebtedness. We use a single ratio for two reasons: (i) to make a model as simple as possible, and (ii) to simplify our study regarding whether market crashes and global recessions affect the scaling existing in bankruptcy data. In order to relate the probability of bankruptcy to  $R$ , we analyze the scaling relations that quantify the probability distribution of firms that entered into bankruptcy proceedings with particular values of  $A_b$  and  $R$ . Our analysis includes a very few number of young startup firms, for which the age of the firm also factors into the probability of bankruptcy in addition to  $R$ . In 2009, we find that the average lifetime of the 215 bankrupt firms analyzed was  $35.8 \pm 33.9$  y and the minimum lifetime was 3 y.

ii. We analyze market capitalization, assets, and liabilities of 2,545 firms traded on the Nasdaq over the 3 y period from 2006 to 2008. We also analyze assets and liabilities of 1,680 firms traded on the New York Stock Exchange (NYSE) in the period from 2007 to 2009. Also, we analyze market capitalization of NYSE members over the period 2002–2007.

## Quantitative Methods

Our analysis is closely related to the literature on firm size (19, 20). Analyzing data from the US Census Bureau, ref. 20 reported

Author contributions: B.P., D.H., A.M.P., B.U., and H.E.S. designed research, performed research, contributed new reagents/analytic tools, analyzed data, and wrote the paper.

The authors declare no conflict of interest.

<sup>1</sup>To whom correspondence may be addressed. E-mail: bp@phy.hr or hes@bu.edu.

that firm sizes of the US firms follow a Zipf law: The number of firms larger than size  $s$  is  $s^{-\zeta}$ , where  $\zeta \simeq 1$ . The Zipf distribution is found for the distribution of city sizes (21) and the distribution of firm sizes (20, 22).

The cumulative distribution is a simple transformation of the Zipf rank–frequency relation, where the observations  $x_i$  are ordered according to rank  $r$  from largest ( $r \equiv 1$ ) to smallest. For Pareto-distributed variables  $s$  with cumulative distribution  $P(s > x) \sim x^{-\zeta'}$ , the Zipf plot of size  $s$  versus rank  $r$  exhibits a power-law scaling regime with the scaling exponent  $\zeta$ , where

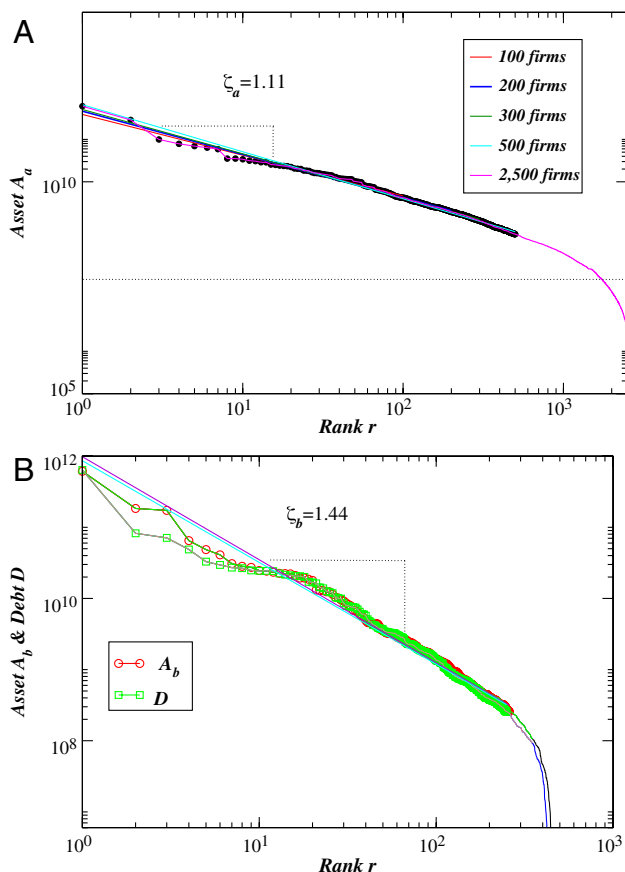
$$\zeta = 1/\zeta'. \quad [2]$$

### Results of Analysis

Fig. 1A shows the Zipf plot for prepetition book value of assets  $A_a$ . The data are approximately linear in a log–log plot with the exponent

$$\zeta_a = 1.11 \pm 0.01, \quad [3]$$

obtained using the ordinary least-squares regression method. For the US data on firm size (measured by the number of employees), ref. 20 reported the value  $\zeta \simeq 1$ . Hence, prior to filing for bankruptcy protection, the book value of firm assets for companies that later underwent bankruptcy satisfies a scaling relation similar to that in ref. 20. The firms with a rank larger than  $\approx 500$  start to deviate from the Zipf law, a result of finite size effects as found in data on firm size (20).



**Fig. 1.** Zipf plot of US bankrupted firm assets. (A) Zipf plot calculated for firms over the last 20 y between prepetition total assets,  $A_a$  versus rank. Deviation from the Zipf law is due to the fact that the dataset includes mainly the firms with assets larger than 50 million dollars (dotted line). (B) Zipf plot of US bankrupted firms of debt versus rank—462 firms in total—along with Zipf plot of book value asset and rank. The two plots practically overlap.

It is known that the market equity of firms that are close to bankruptcy is typically discounted by traders (10, 12). In order to study if those changes are size dependent during the time of bankruptcy, we test whether there is a difference in scaling behavior between prepetition and petition firm assets. Fig. 1B ranks the firm book value of assets  $A_b$  and firm debt  $D_b$ . We find

$$\zeta_b = \zeta_D = 1.44 \pm 0.01. \quad [4]$$

Note that Fig. 1 includes only firms with the largest values of  $A_a$  and  $A_b$ . Thus, the firms with the largest bankruptcy adjustments, with potentially small  $A_b$  values, are not necessarily included in Fig. 1. Also, a Zipf law is found for the distribution of total liabilities of bankrupted firms in Japan (23, 24).

We obtain that  $\zeta_b > \zeta_a$ , a discrepancy that could be of potential practical interest. To clarify this point, if  $A_b$  is related to  $A_a$  by a constant  $A_b/A_a \equiv c$ , we would observe  $\zeta_a = \zeta_b$ . However, we observe an increasing relation  $A_a/A_b \propto r^{\zeta_b - \zeta_a}$  with rank  $r$ , meaning that bankrupt firms with smaller  $A_a$  have larger relative adjustments than do bankrupt firms with larger  $A_b$ .

Our analysis of bankruptcy probability is, due to data limitation, based on book values. One may argue that a more relevant analysis would be based on market values of assets and liabilities. We now demonstrate that using market instead of book values may in fact lead to similar results. For this purpose, let us consider companies for which we have both market and book value data, namely stocks that comprise the Nasdaq. We begin by finding market capitalization of Nasdaq members for each year from 2002 to 2007. The data are available at Bloomberg L.P. Fig. 2A shows the Zipf plot for market capitalization deflated to 2002 dollar values. We find that the market capitalization versus rank for the largest  $\approx 1,000$  companies is well described by a Zipf law with exponent  $\zeta_M = 1.1 \pm 0.02$ , in agreement with ref. 25.

In Fig. 2B we repeat the Zipf analysis using, this time, book values of both assets and debt for the same Nasdaq stocks. The scaling exponents we observe in Fig. 2B are larger than the exponent observed in Fig. 2A. However, market capitalization is best compared with book value of equity  $E \equiv A - D$ , rather than assets  $A$ . In Fig. 2C, we find that  $E$  also exhibits Zipf scaling with exponent  $\zeta_E = 1.02 \pm 0.01$ , which is more similar to  $\zeta_M$ . Therefore, we find qualitatively similar scaling for the existing Nasdaq companies and for companies before they entered into bankruptcy proceedings.

The probability of bankruptcy  $P(R)$  is a natural proxy for firm distress (10). Previous studies analyzed defaults of firms traded at NYSE, American Stock Exchange (AMEX), and Nasdaq (10). In contrast, the majority of firms in our dataset are privately held companies. For bankrupt firms in Fig. 3A we show  $P(R|B)$  for values of the debt-to-assets ratio  $0 < R < 4$ . We truncate data to avoid outliers as in ref. 11. We find  $P(R|B)$  is right-skewed with a maximum at  $R \approx 1$ , and  $\langle R \rangle = 1.4 \pm 1.5$ .

Previous studies find that bankruptcy risk of NYSE and AMEX stocks is negatively related to firm size (10). In order to test for firm-size dependence of bankruptcy risk with  $R$  as bankruptcy measure, we divide the  $R$  values into two subsamples based on their value of  $A_b$ . In Fig. 3A we demonstrate qualitatively that  $R$  is size dependent. The probability density functions (pdfs) for small  $A_b$  and large  $A_b$  are similar in that they both show peaks at  $R \approx 1$ . However, firms with smaller assets, as measured by  $A_b$ , have a larger probability of high debt-to-assets ratios  $R$  than firms with large assets  $A_b$ .

In addition, we test for the size dependence by performing the Mann–Whitney  $U$  test, which quantifies the difference between the two populations based on the difference between the asset ranks of the two samples. (The null hypothesis is that the distributions are the same.) Because the test statistics  $U$  value =  $-5.60$ , we reject the null hypothesis thus confirming that  $R$  depends on  $A_b$  at the  $p = 0.05$  confidence level.



We estimate the scaling of  $P(B|R)$  using Bayes's theorem,

$$P(B|R) = \frac{P(R|B)P(B)}{P(R)} \approx 0.51P(B)R^{1/\zeta_e - 1/\zeta_R} \approx 0.51P(B)R^{0.95}, \quad [5]$$

where we approximate  $P(R|B)$  and  $P(R)$  with power laws  $-P(R|B) \sim R^{-(1/\zeta_R + 1)}\Delta R$  and  $P(R) \sim R^{-(1/\zeta_e + 1)}\Delta R$ . The value of the relevant exponents calculated for regime I are as follows:  $\zeta_e \approx 0.37$  (see Fig. 4) and  $\zeta_R = 0.57$  (see Fig. 3B), where  $\zeta_R > \zeta_e$  implies that  $P(B|R)$  increases with firm indebtedness quantified by  $R$ . The prefactor 0.51 calculated for the regime I we estimate from the corresponding intercepts in pdfs [see Figs. 3B and 4]. In Fig. 4, we find a pronounced cross-over in the Zipf plot for very large values of the  $R$  ratio.

In order to test whether market crash and global recession have significant effects on the scaling we find in the bankruptcy data, in Fig. 5 we analyze the Zipf scaling of the large  $R$  values for three different 3-y periods. For the period 2004–2006, we find a stable Zipf plot characterized by an exponent  $\zeta_R = 0.50 \pm 0.01$  close to the value we found in Fig. 3B for all years analyzed. For the period 2001–2003 characterized by the dot-com bubble burst, we find a less pronounced cross-over in the Zipf plot between regime I with exponent  $\zeta_R = 0.58 \pm 0.01$  and regime II. For the period 2007–2009, we find that the Zipf plot exhibits a significant cross-over behavior between regime I and regime II.

Fig. 5 demonstrates the existence of a relatively stable scaling exponent (between 0.5 and 0.6) in regime I over the 9-y period 2001–2009. However, in times of economic crisis, e.g., the period 2007–2009, the exponent in regime I increases, implying that firms go bankrupt with larger values of  $R$ . According to Eq. 5, in times of crisis ( $\zeta_R \approx 0.6$ )  $P(B|R) \propto R^{1/\zeta_e - 1/\zeta_R} \propto R^1$  shifts upward compared to times of relative stability ( $\zeta_R \approx 0.5$ ) when  $P(B|R) \propto R^{0.7}$ . A cross-over in scaling exponents may be useful for understanding asset bubbles.

### Model

Our results complement both the literature on default risk as well as the literature on firm growth. According to a study of US firm dynamics, over 65% of the 500 largest US firms in 1982 no longer existed as independent entities by 1996 (27). To explain how firms develop, expand, and then cease to exist, Jovanovic proposed a theory of selection where the key is firm efficiency; efficient firms grow and survive and the inefficient decline and, eventually, fail (15). Many models have been proposed to model default risk

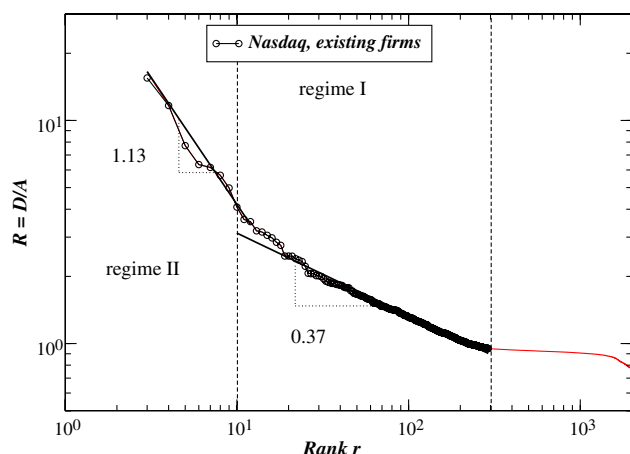
(1, 2, 28–31). One strain of that literature (28) develops structural models of credit risk. In these models, risky debt is modeled within an option-pricing framework where an underlying asset is the value of company assets. Bankruptcy occurs endogenously when the value of company assets is insufficient to cover obligations. In contrast, in reduced form models (2) default is modeled exogenously.

In order to reproduce the Zipf law that holds for bankrupt firms, we propose a coupled Simon model, an extension of the Simon model used in the theory of firm growth (13, 14, 16, 17). Here we couple the evolution of both asset growth and debt growth through debt acquisition which depends on a firm's assets, and further impose a bankruptcy condition on a firm's assets and debt values at any given time.

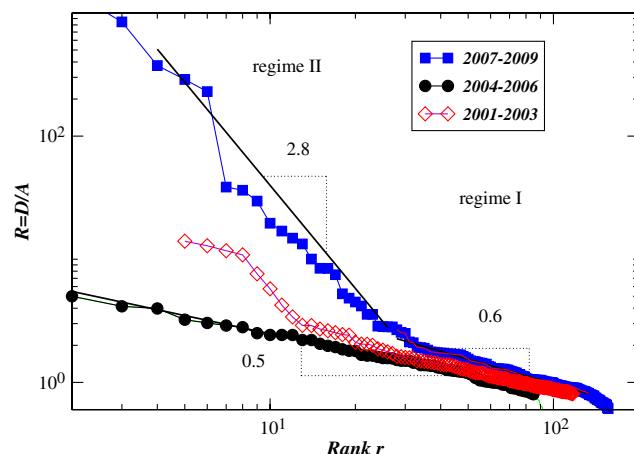
**Simon Rule for Assets.** The economy begins with one firm at the initial time  $t \equiv 1$ . At each step, a new firm with initial assets  $A \equiv 1$  is added to the economy. With a probability  $p$ , a new firm  $i$  is added to the economy as an individual entity at time  $t_i$ . With probability  $1 - p$ , the new firm  $i$  is taken over by an already existing firm. The probability that firm  $i$  is taken over by an existing firm  $j$  is proportional to  $A_j(t)$ , the number of units in firm  $j$  is equal to  $(1 - p)A_j(t) / \sum_k A_k(t)$ . Hence, a larger firm is more likely to acquire a firm than a smaller firm. In this expression, the index  $k$  runs over all of the existing firms at time  $t$ . We use the value  $A_j(t)$  to be the proxy for the size of the firm  $j$ . Simon found a stationary solution exhibiting power-law scaling,  $P(s > x) \propto s^{-\zeta'}$ , with exponent  $\zeta' = 1/(1 - p)$ . For an estimate of  $p$ , one can investigate venture data to see how venture capitalists dispose of their companies. Even though data suggest  $p = 0.5$  (see ref. 32), we use a much smaller value  $p = 0.01$  in order to reproduce Zipf plot in Eq. 4.

**Simon Rule for Debt.** When a new firm  $i$  is created at time  $t_i$ , it is assigned debt  $D_i(t_i) = m$ , where  $0 < m < 1$ . For simplicity, we use a single  $m$  value for all firms. If an existing firm  $j$  acquires the new asset  $A_i \equiv 1$ , then  $A_j(t) - A_j(t - 1) = 1$ , and debt  $D_j(t) - D_j(t - 1) = m$ . Hence, a firm with assets  $A_j(t) = N$  has debt  $D_j(t) = mN$ , implying that the debt-to-assets ratio  $R = m$  is the same for all firms.

In order to introduce variation in  $R$  ratios across firms, we assume that at each time  $t_i$ , a new debt is created in the economy for some company  $j$ , so that  $D_j(t_i) - D_j(t_i - 1) = 1$ . Hence, for each time step, there is a new firm receiving debt  $D_i = m$  in addition to

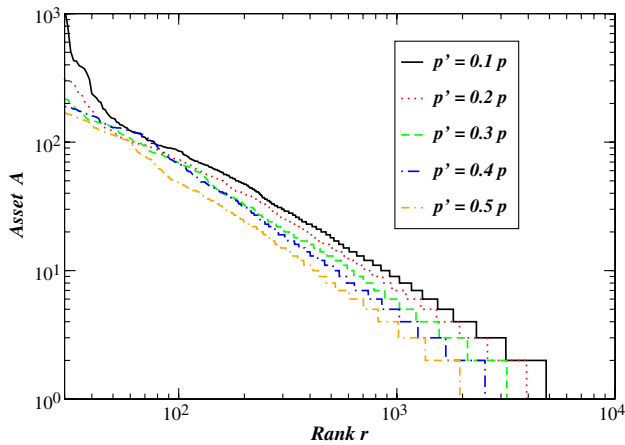


**Fig. 4.** Zipf plot of debt-to-assets ratio  $R$  versus rank  $r$  for the existing firms of the Nasdaq members over the last 3 y. For the  $\approx 300$  ratio values smaller than 3.5 and larger than 0.95 the Zipf plot has exponent 0.37. The same regime we fit with the power-law tail of pdf and obtain  $1.54R^{-3.6}$  where the exponent  $\zeta' = 3.6$  agrees (see Eq. 2) with the Zipf exponent  $\zeta = 0.37$ .



**Fig. 5.** Zipf plot of debt-to-assets ratio  $R$  versus rank  $r$  for the bankrupt firms for the three different 3-y subperiods. During the last 3 y characterized by recession, the Zipf plot exhibits a cross-over behavior. A smaller cross-over in the Zipf plot also exists for the period 2001–2003 characterized by the dot-com bubble burst.

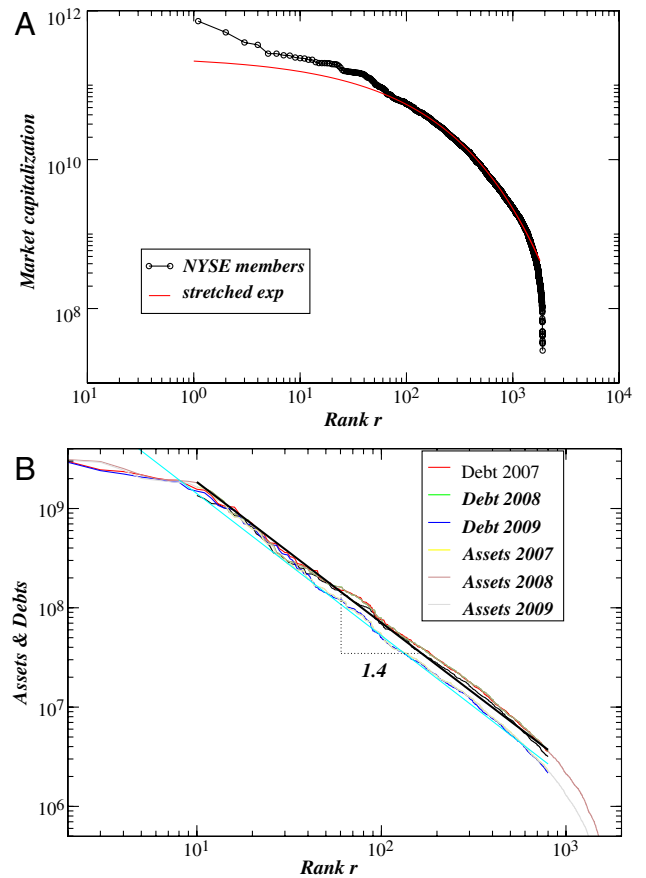




**Fig. 7.** Scale-free persistence in the Simon model with mergers. Zipf plot of value  $A_j(t)$ —the value of assets of the firm  $j$ —versus rank  $r$  for the Simon model with a merger parameter  $p'$  representing the probability that a pair of firms will merge. With increasing  $p'$ ,  $\zeta$  slowly increases.

firm  $i$  resulting in the elimination of firm  $i$  as an individual entity. In Fig. 7, we show that the inclusion of mergers does not change the scale-free nature of the Simon model. In these simulations, we use a varying merger probability  $p'$ , and  $p = 0.01$  with 1 million time steps. With increasing  $p'$ , the Zipf exponent  $\zeta$  slowly decreases. Note that, with 1 million time steps, if  $p' = 0.5p$ , and with  $p = 0.01$ , then approximately 5,000 mergers occur.

Before concluding, we note that market capitalization as well as book value of assets, liabilities, and equity for the stocks traded at Nasdaq exhibit Pareto scaling properties. Pareto scaling properties are not trivial consequences of the scaling (20) because, for companies traded at NYSE, we do not find similar power-law scaling for market capitalization (see Fig. 8A) and book value of equity. However, the book value of assets and liabilities for NYSE stocks follows a Pareto law with exponents that are slightly larger than those we find for Nasdaq stocks (see Fig. 8B). Our results reveal a discrepancy in scaling of market capitalization and book value of equity obtained from different exchange markets (e.g., Nasdaq and NYSE).



**Fig. 8.** Zipf plot of (A) market capitalization  $M$  versus rank  $r$  and (B) assets and debt versus rank  $r$  for the NYSE members for year 2007. The curve in A follows a stretched exponential  $\exp(-r^\beta/\tau)$  with  $\beta = 0.5$  and  $\tau = 45$ .

**ACKNOWLEDGMENTS.** We thank Xavier Gabaix for helpful suggestions and the Ministry of Science of Croatia, Serbian Ministry of Science and Technology, and the National Science Foundation for financial support.

1. Duffie D, Singleton K (2003) *Credit Risk* (Princeton Univ Press, Princeton).
2. Lando D (2004) *Credit Risk Modeling* (Princeton Univ Press, Princeton).
3. Beaver W (1966) Financial ratios as predictors of failure. *J Account Res* 4:71–111.
4. Altman EI (1968) Financial ratios, discriminant analysis and the prediction of corporate bankruptcy. *J Financ* 23:589–609.
5. Altman EI, Haldeman R, Narayanan P (1977) ZETA Analysis: A new model to identify bankruptcy Risk of Corporation. *J Bank Financ* 1:29–54.
6. Ohlson JA (1980) Financial ratios and the probabilistic prediction of bankruptcy. *J Account Res* 18:109–131.
7. Scott J (1981) The probability of bankruptcy: A comparison of empirical predictions and theoretical models. *J Bank Financ* 5:317–344.
8. Zmijewski ME (1984) Methodological issues related to the estimation of financial distress prediction models. *J Account Res* 22:59–82.
9. Schary MA (1991) The Probability of exit. *Rand J Econ* 22:339–353.
10. Dichev ID (1998) Is the risk of bankruptcy a systematic risk? *J Financ* 53:1131–1147.
11. Shumway T (2001) Forecasting bankruptcy more accurately: A simple hazard model. *J Bus* 74:101–124.
12. Beaver WH, McNichols MF, Rhie JW (2005) Have financial statements become less informative? Evidence from the ability of financial ratios to predict bankruptcy. *Rev Acc Stud* 10:93–122.
13. Simon HA (1955) On a class of skew distribution functions. *Biometrika* 42:425–440.
14. Ijiri Y, Simon H (1977) *Skew Distributions and the Sizes of Business Firms* (North-Holland, New York).
15. Jovanovic B (1982) Selection and the evolution of industry. *Econometrica* 50:649–670.
16. Sutton J (1997) Gibrat's legacy. *J Econ Lit* 35:40–59.
17. Fu D, et al. (2005) The growth of business firms: Theoretical framework and empirical evidence. *Proc Natl Acad Sci USA* 102:18801–18806.
18. Tobin J (1969) A general equilibrium approach to monetary theory. *J Money Credit Bank* 1:15–29.
19. Stanley MHR, et al. (1995) Zipf plots and the size distribution of firms. *Econ Lett* 49:453–457.
20. Axtell RL (2001) Zipf distribution of US firm sizes. *Science* 293:1818–1820.
21. Gabaix X (1999) Zipf's law for cities: An explanation. *Q J Econ* 114:739–767.
22. Gabaix X (2009) Power laws in economics and finance. *Annu Rev Econ* 1:255–593.
23. Aoyama H, et al. (2000) Pareto's law for the income of individuals and debt of bankrupt companies. *Fractals* 8:293–300.
24. Fujiwara Y (2004) Zipf law in firms bankruptcy. *Physica A* 337:219–230.
25. Barbarino A, Jovanovic B (2007) Shakeouts and market crashes. *Int Econ Rev* 48:385–420.
26. Petersen AM, Podobnik B, Horvatic D, Stanley HE (2010) Scale invariant properties of public-debt growth. *Europhys Lett* 90:38006.
27. Blair MM, Kruse DL, Blasi JR (1998) *Is employee ownership an unstable form? Or a stabilizing force?* Working paper (Brookings Inst, Washington, DC).
28. Merton RC (1974) On the pricing of corporate debt: The risk structure of interest rates. *J Financ* 29:449–470.
29. Black F, Cox JC (1976) On the pricing of corporate debt: The risk structure of interest rates. *J Financ* 31:351–367.
30. Longstaff FA, Schwartz ES (1995) A simple approach to valuing risky fixed and floating rate debt. *J Financ* 50:789–819.
31. Hull J, White A (1995) The impact of default risk on the prices of options and other derivative securities. *J Bank Financ* 19:299–322.
32. Jovanovic B, Rousseau PL (2001) Why wait? a century of life before IPO. *Am Econ Rev* 91:336–341.
33. Barabási AL (1999) Emergence of scaling in random networks. *Science* 286:509–512.
34. Altman EI, Karlin BJ (2008) *Defaults and Returns in the High-Yield Bond Market: The Year 2007 in Review and Outlook* (New York University Salomon Center, New York).
35. Dorogovtsev SN, Mendes JFF, Samukhin AN (2000) Structure of growing networks with preferential linking. *Phys Rev Lett* 85:4633–4636.
36. Andrade G, Mitchell M, Stafford E (2001) New evidence and perspective on mergers. *J Econ Perspect* 15:103–120.