

# Evolution of the specific star formation rate function at $z$

---

**Ilbert, O.; Arnouts, S.; Le Floc'h, E.; Aussel, H.;  
Bethertin, M.; Capak, P.; Hsieh, B.-C.; Kajisawa, M.;  
Karim, A.; Le Fèvre, O.; ...**

*Source / Izvornik:* **Astronomy and Astrophysics**, 2015, 579

**Journal article, Published version**

**Rad u časopisu, Objavljena verzija rada (izdavačev PDF)**

<https://doi.org/10.1051/0004-6361/201425176>

*Permanent link / Trajna poveznica:* <https://um.nsk.hr/um:nbn:hr:217:909482>

*Rights / Prava:* [In copyright](#) / [Zaštićeno autorskim pravom.](#)

*Download date / Datum preuzimanja:* **2025-03-22**



*Repository / Repozitorij:*

[Repository of the Faculty of Science - University of Zagreb](#)



# Evolution of the specific star formation rate function at $z < 1.4$ Dissecting the mass-SFR plane in COSMOS and GOODS\*

O. Ilbert<sup>1</sup>, S. Arnouts<sup>1</sup>, E. Le Floch<sup>h2</sup>, H. Aussel<sup>3</sup>, M. Bethermin<sup>4</sup>, P. Capak<sup>5</sup>, B.-C. Hsieh<sup>6</sup>, M. Kajisawa<sup>7,8</sup>, A. Karim<sup>9</sup>,  
 O. Le Fèvre<sup>1</sup>, N. Lee<sup>10</sup>, S. Lilly<sup>11</sup>, H. J. McCracken<sup>12</sup>, L. Michel-Dansac<sup>13</sup>, T. Moutard<sup>1</sup>, M. A. Renzini<sup>14</sup>,  
 M. Salvato<sup>15</sup>, D. B. Sanders<sup>9</sup>, N. Scoville<sup>16</sup>, K. Sheth<sup>17</sup>, J. D. Silverman<sup>18</sup>, V. Smolčić<sup>19</sup>, Y. Taniguchi<sup>7</sup>, and L. Tresse<sup>1</sup>

<sup>1</sup> Aix-Marseille Université, CNRS, LAM (Laboratoire d'Astrophysique de Marseille) UMR 7326, 13388 Marseille, France  
 e-mail: [olivier.ilbert@lam.fr](mailto:olivier.ilbert@lam.fr)

<sup>2</sup> AIM, Unité Mixte de Recherche CEA CNRS, Université Paris VII, UMR n158, 75014 Paris, France

<sup>3</sup> Laboratoire AIM, CEA/DSM/IRFU, CNRS, Université Paris-Diderot, 91190 Gif-sur-Yvette Cedex, France

<sup>4</sup> European Southern Observatory, Karl-Schwarzschild-Str. 2, 85748 Garching, Germany

<sup>5</sup> Spitzer Science Center, California Institute of Technology, Pasadena, CA 91125, USA

<sup>6</sup> Institute of Astronomy and Astrophysics, Academia Sinica, PO Box 23-141, 10617 Taipei, Taiwan, ROC

<sup>7</sup> Research Center for Space and Cosmic Evolution, Ehime University, 2-5 Bunkyo-cho, 790-8577 Matsuyama, Japan

<sup>8</sup> Physics Department, Graduate School of Science & Engineering, Ehime University, 2-5 Bunkyo-cho, 790-8577 Matsuyama, Japan

<sup>9</sup> Argelander-Institut für Astronomie, Universität Bonn, Auf dem Hügel 71, 53121 Bonn, Germany

<sup>10</sup> Institute for Astronomy, 2680 Woodlawn Dr., University of Hawaii, Honolulu, Hawaii, HI 96822, USA

<sup>11</sup> Department of Physics, ETH Zurich, 8093 Zurich, Switzerland

<sup>12</sup> Institut d'Astrophysique de Paris, UMR 7095 CNRS, Université Pierre et Marie Curie, 98bis boulevard Arago, 75014 Paris, France

<sup>13</sup> Centre de Recherche Astrophysique de Lyon, Université Lyon 1, Observatoire de Lyon, 9 Av. Charles Andrée,  
 69561 Saint-Genis Laval Cedex, France

<sup>14</sup> Dipartimento di Astronomia, Università di Padova, vicolo dell'Osservatorio 2, 35122 Padua, Italy

<sup>15</sup> Max-Planck-Institut für Extraterrestrische Physik, Postfach 1312, 85741 Garching bei München, Germany

<sup>16</sup> California Institute of Technology, MC 105-24, 1200 East California Boulevard, Pasadena, CA 91125, USA

<sup>17</sup> National Radio Astronomy Observatory, 520 Edgemont Road, Charlottesville, VA 22903, USA

<sup>18</sup> Kavli Institute for the Physics and Mathematics of the Universe, Todai Institutes for Advanced Study, the University of Tokyo,  
 277-8583 Kashiwa, Japan

<sup>19</sup> University of Zagreb, Physics Department, Bijenička cesta 32, 10002 Zagreb, Croatia

Received 17 October 2014 / Accepted 2 March 2015

## ABSTRACT

The relation between the stellar mass ( $M_*$ ) and the star formation rate (SFR) characterizes how the instantaneous star formation is determined by the galaxy past star formation history and by the growth of the dark matter structures. We deconstruct the  $M_*$ -SFR plane by measuring the specific SFR functions in several stellar mass bins from  $z = 0.2$  out to  $z = 1.4$  (specific  $SFR = SFR/M_*$ , noted  $sSFR$ ). Our analysis is primary based on a 24  $\mu\text{m}$  selected catalogue combining the COSMOS and GOODS surveys. We estimate the SFR by combining mid- and far-infrared data for 20500 galaxies. The  $sSFR$  functions are derived in four stellar mass bins within the range  $9.5 < \log(M_*/M_\odot) < 11.5$ . First, we demonstrate the importance of taking into account selection effects when studying the  $M_*$ -SFR relation. Secondly, we find a mass-dependent evolution of the median  $sSFR$  with redshift varying as  $sSFR \propto (1+z)^b$ , with  $b$  increasing from  $b = 2.88^{+0.12}$  to  $b = 3.78^{+0.60}$  between  $M_* = 10^{9.75} M_\odot$  and  $M_* = 10^{11.1} M_\odot$ , respectively. At low masses, this evolution is consistent with the cosmological accretion rate and predictions from semi-analytical models (SAM). This agreement breaks down for more massive galaxies showing the need for a more comprehensive description of the star formation history in massive galaxies. Third, we obtain that the shape of the  $sSFR$  function is invariant with time at  $z < 1.4$  but depends on the mass. We observe a broadening of the  $sSFR$  function ranging from 0.28 dex at  $M_* = 10^{9.75} M_\odot$  to 0.46 dex at  $M_* = 10^{11.1} M_\odot$ . Such increase in the intrinsic scatter of the  $M_*$ -SFR relation suggests an increasing diversity of star formation histories (SFHs) as the stellar mass increases. Finally, we find a gradual decline of the  $sSFR$  with stellar mass as  $\log_{10}(sSFR) \propto -0.17 M_*$ . We discuss the numerous physical processes, as gas exhaustion in hot gas halos or secular evolution, which can gradually reduce the  $sSFR$  and increase the SFH diversity.

**Key words.** galaxies: evolution – galaxies: luminosity function, mass function – galaxies: stellar content – galaxies: star formation – galaxies: statistics – galaxies: formation

## 1. Introduction

Numerous observational results show a tight relationship between the stellar mass ( $M_*$ ) and the star formation rate (SFR)

of star-forming galaxies (e.g. Noeske et al. 2007a; Elbaz et al. 2007; 2011; Daddi et al. 2007; Peng et al. 2010; Karim et al. 2011). The star-forming galaxies are distributed in the  $M_*$ -SFR plane along what is commonly called the “star-forming main sequence”. If we do not consider quiescent galaxies, the existence of such a  $M_*$ -SFR relation implies that the galaxies that are

\* Appendices are available in electronic form at  
<http://www.aanda.org>

currently the most star-forming were also the most star-forming in their past history. Star-forming galaxies are scattered around this relation as expected from the stochasticity in their individual star formation histories (SFHs; e.g. Hopkins et al. 2014; Domínguez et al. 2014) and from the variety of possible SFHs. Extreme events like mergers could decouple the instantaneous SFR from the past star formation history and create outliers to the  $M_\star$ -SFR relation, which is one definition of starbursts (e.g. Rodighiero et al. 2011).

While the shape and the scatter of the  $M_\star$ -SFR relation already provide deep insights into the galaxy assembly process, its evolution along cosmic time is also of a great interest. Noeske et al. (2007a), Daddi et al. (2007) and Elbaz et al. (2007) find that the  $M_\star$ -SFR relation scales with cosmic time, such that the SFR increases with redshift at a given stellar mass. This evolution is also seen as an increase in the specific SFR (hereafter  $sSFR = SFR/M_\star$ ) with redshift at a given stellar mass. There is a growing consensus that the  $sSFR$  evolution is deeply linked to the hierarchical growth of dark matter structures (e.g. Bouché et al. 2010; Lilly et al. 2013). Assuming that galaxies are fed by fresh gas at a constant fraction of the averaged cosmological accretion rate, the  $sSFR$  should evolve as the specific dark matter increase rate (hereafter  $sMIR_{DM}$ ) defined as  $\dot{M}_H/M_H$  with  $M_H$  the mass of the dark matter halos (Lilly et al. 2013). However, the galaxies could be fed more efficiently in fresh gas at high redshift than in the local Universe since cold accretion occurs mainly at  $z > 2$  (e.g. Dekel et al. 2009). Therefore, having an accurate characterization of the  $sSFR$  evolution with redshift is crucial in order to link the galaxy stellar mass assembly with the growth of the dark matter structures.

Below  $z < 1-1.5$ , the  $sSFR$  is relatively well measured using robust infrared data (Noeske et al. 2007a; Elbaz et al. 2007, 2011) and radio data (Karim et al. 2011). The  $sSFR$  increases steadily from the present day to  $z \sim 2$  (e.g. Daddi et al. 2007; Karim et al. 2011) and its evolution is usually parametrized as  $sSFR \propto (1+z)^b$ . The values of  $b$  in the literature cover the full range between 2.5 and 5 (e.g. Speagle et al. 2014). Most studies assume a linear relation between  $\log(sSFR)$  and  $\log(M_\star)$  and characterize the slope and the scatter of this relation. Depending on the survey characteristics and on the SFR tracer, the value of the slope varies significantly in the literature. Noeske et al. (2007a) find a slope of  $-0.33^{+0.08}_{-0.03}$ , while several other studies obtain a value close to  $-0.1$  (Elbaz et al. 2007; Daddi et al. 2007; Pannella et al. 2009; Peng et al. 2010). In the compilation of Speagle et al. (2014), the slope varies between  $-0.65$  and  $-0.05$  and depends on the SFR tracer. Some studies show that the slope could depend on the stellar mass and they even show a probable break in the  $M_\star$ - $sSFR$  relation (e.g. Noeske et al. 2007a; Bauer et al. 2013; Lee et al. 2015; Whitaker et al. 2014). The parametrization assuming a linear relation between  $\log(sSFR)$  and  $\log(M_\star)$  is likely not valid over the full mass range. Finally, the scatter of the  $M_\star$ - $sSFR$  relation is also debated in the literature. The scatter is ranging from 0.15 dex (Salmi et al. 2012) to 0.5 dex (Salim et al. 2007) and does not depend on the mass (e.g. Speagle et al. 2014; Lee et al. 2015). While studied in great detail, no consensus has been reached on the evolution, the scatter and the slope of the  $M_\star$ - $sSFR$  relation.

Most of the analyses of the  $M_\star$ - $sSFR$  relation are based on scatter diagrams (i.e. displays of the location of the individual sources in the  $M_\star$ - $sSFR$  plane). However, this method does not provide any quantitative information on how galaxies are distributed around the median  $sSFR$ , and does not account for galaxies that could be under-sampled or missed by selection effects. In order to overcome this limitation, one should

split the  $M_\star$ - $sSFR$  plane in several mass bins and characterize the  $sSFR$  distribution in each bin correcting for selection effects. Then, accurate and robust information can be extracted from the analysis of the  $sSFR$  distribution.

The  $sSFR$  distribution has already been investigated in a few studies. Guo et al. (2013) produced the  $sSFR$  distributions per stellar mass bin in a sample similar to ours. Their study is limited to  $0.6 < z < 0.8$  while we want to explore a large redshift range in order to analyse the  $sSFR$  evolution. The work of Rodighiero et al. (2011) is also limited to one redshift slice at  $z \sim 2$ . Moreover, Rodighiero et al. (2011) need to rely on the UV light to trace the  $sSFR$  for the bulk of the star-forming population. Unfortunately, converting the UV light into SFR introduces uncertainties since it requires an estimate of the UV light absorbed by dust (e.g. Heinis et al. 2013; Rodighiero et al. 2014). By fitting a log-normal function over the  $sSFR$  distribution established by Rodighiero et al. (2011), Sargent et al. (2012) find  $\sigma = 0.188^{+0.003}_{-0.003}$ . Moreover, Sargent et al. (2012) include in their fit a population of starbursts, i.e., galaxies having a  $sSFR$  higher than expected from the main sequence position. They estimate that 4% of the galaxies could be considered starbursts at  $z \sim 2$ . Finally, Kajisawa et al. (2010) measured the  $sSFR$  distribution per mass bin at  $0.5 < z < 3$  but with a sample limited in size.

Here, we estimate the  $sSFR$  functions, i.e., the number density of the galaxy per comoving volume and per  $sSFR$  bin. We measure the  $sSFR$  functions in four stellar mass bins from  $z = 0.2$  to  $z = 1.4$ . In order to overcome the limitations of previous studies, we follow the following principles. First, our results rely on one robust SFR tracer, the  $24 \mu\text{m}$  IR data obtained with the Multiband Imaging Photometer (MIPS) camera on board the Spitzer satellite. By limiting the analysis at  $z < 1.4$ , the galaxy  $L_{IR}$  can be derived with an accuracy better than 0.15 dex using the MIPS  $24 \mu\text{m}$  data (Elbaz et al. 2010). The advantage of using a  $24 \mu\text{m}$  selected sample is that we reach a lower SFR limit in comparison to a sample selected in one Herschel band. Since we apply one single cut in flux, we can easily correct for selection effect. Second, we limit our analysis to galaxy samples which are complete in stellar mass. These criteria allows us to consider only the SFR limit without having to consider an additional mass limit. Third, we combine the COSMOS (Scoville et al. 2007) and GOODS (Giavalisco et al. 2004) surveys. The large COSMOS area of  $1.5 \text{ deg}^2$  allows us to get rare and massive star-forming sources, while the deep GOODS data allow us to study the shape of the relation at low  $sSFR$  and low mass. Therefore, we have a broader view of the main sequence and we deal with selection effects. Finally, we parametrize the shape of the  $sSFR$  function to fit the data. We try several options for the parametrization. Based on these fits, we can derive accurate measurements of the median  $sSFR$ , or of the width of the  $sSFR$  function, which modify some previous findings on the star-forming main sequence.

The paper is organized as follows. The data are introduced in Sect. 2. Since the “main sequence” refers only to star-forming galaxies, we need to carefully select this population, as described in Sect. 3. The method used to estimate the  $sSFR$  functions and the associated uncertainties is explained in Sect. 4. We discuss the evolution of the  $sSFR$  functions in Sect. 5. We compare our reference  $sSFR$  functions with the ones obtained using optical SFR tracers in Sect. 6 and with predictions of a semi-analytical model in Sect. 7. Finally, we discuss our results in Sect. 8 and conclude in Sect. 9.

Throughout this paper, we use the standard cosmology ( $\Omega_m = 0.3$ ,  $\Omega_\Lambda = 0.7$  with  $H_0 = 70 \text{ km s}^{-1} \text{ Mpc}^{-1}$ ). Magnitudes are given in the AB system (Oke 1974). The stellar masses ( $M_\star$ )



are given in units of solar masses ( $M_{\odot}$ ) for a Chabrier (2003) initial mass function (IMF). The  $sSFR$  is given in  $\text{Gyr}^{-1}$ .

## 2. The galaxy stellar mass and SFR samples

Our analysis combines the data from the GOODS and the COSMOS surveys and our measurements are based on MIPS selected samples at  $F_{24\mu\text{m}} > 20\ \mu\text{Jy}$  and  $F_{24\mu\text{m}} > 60\ \mu\text{Jy}$ , respectively.

In the COSMOS field, we use the  $i^+$ -selected catalogue (limiting magnitude of 26.2 mag at  $5\sigma$ ) created by Capak et al. (2007). We use an updated version of the photometric catalogue including the UltraVISTA DR1 data release (McCracken et al. 2012) and new SPLASH IRAC data at 3.6 and  $4.5\ \mu\text{m}$  (Capak et al., in prep.). The photometric redshifts are estimated using 30 bands, as described in Ilbert et al. (2013). Their accuracy is similar to Ilbert et al. (2013) in the redshift range considered in this paper ( $0.2 < z < 1.4$ ). By comparing these photometric redshifts with 10 800 spectroscopic redshifts from the  $z$ COSMOS bright survey (Lilly et al. 2007), we find a precision of  $\sigma_{\Delta z/(1+z)} = 0.008$  at  $i^+ < 22.5$  and  $z < 1.4$ . Using the spectroscopic samples from Comparat et al. (2015), Capak et al. (in prep.) and the VIMOS Ultra-Deep Survey (Le Fèvre et al. 2014), we find  $\sigma_{\Delta z/(1+z)} = 0.03$  at  $i^+ < 24$ .

The stellar masses are estimated using “Le Phare” (Arnouts et al. 2002; Ilbert et al. 2006). We define the stellar mass as the total mass in stars at the considered age (without the mass returned to the interstellar medium by evolved stars). We derive the galaxy stellar masses using a library of synthetic spectra generated using the stellar population synthesis (SPS) model of Bruzual & Charlot (2003). In addition to the library used in Ilbert et al. (2010) assuming exponentially declining SFH, we add two other star formation histories based on delayed SFH ( $\tau^{-2}e^{-t/\tau}$ ) having a maximum SFR peak after 1 and 3 Gyr. For all these templates, two metallicities (solar and half-solar) are considered. Emission lines are added following Ilbert et al. (2009). We include two attenuation curves: the starburst curve of Calzetti et al. (2000) and a curve with a slope  $\lambda^{0.9}$  (Appendix A of Arnouts et al. 2013).  $E(B-V)$  is allowed to take values as high as 0.7. We assign the mass using the median of the marginalized probability distribution function (PDF). As shown in Mitchell et al. (2013), this procedure allows us to reduce some discontinuities in the mass estimate. The  $1\sigma$  uncertainties derived from the PDF increase from 0.035 dex at  $0.2 < z < 0.4$  to 0.055 dex at  $1.2 < z < 1.4$  for the MIPS selected sample considered in this paper. We also match our own mass estimates with the two independent measurements of the masses published in Brammer et al. (2011) and Muzzin et al. (2013). The three mass catalogues are established for the same sources, but use a different photometry, different photo- $z$  codes and different assumptions to construct the SED templates. Based on this comparison<sup>1</sup>, we conclude that the mass uncertainties increase from 0.05 dex at  $0.2 < z < 0.4$  to 0.07 dex at  $1.2 < z < 1.4$ . Systematic uncertainties on the stellar masses (e.g. due to the IMF or SPS choices) are not included here.

The main part of our analysis is based on a MIPS  $24\ \mu\text{m}$  selected catalogue. The deep MIPS S-COSMOS data were taken

during Spitzer Cycle 3 and cover the full COSMOS 2-deg<sup>2</sup> (Sanders et al. 2007). The  $24\ \mu\text{m}$  sources are detected with SExtractor (Bertin & Arnouts 1996) and their fluxes measured with a PSF fitting technique (Le Floc’h et al. 2009). Le Floc’h et al. (2009) identified the optical/near-infrared (NIR) counterparts of the  $24\ \mu\text{m}$  detection. When possible, we also use the Herschel data observed as part of the PEP survey at 100 and  $160\ \mu\text{m}$  (Lutz et al. 2011) and Hermes survey at 250, 350 and  $500\ \mu\text{m}$  (Oliver et al. 2012). The Herschel fluxes are extracted using the  $24\ \mu\text{m}$  catalogue as prior which makes the cross-identification with the optical sample straightforward.

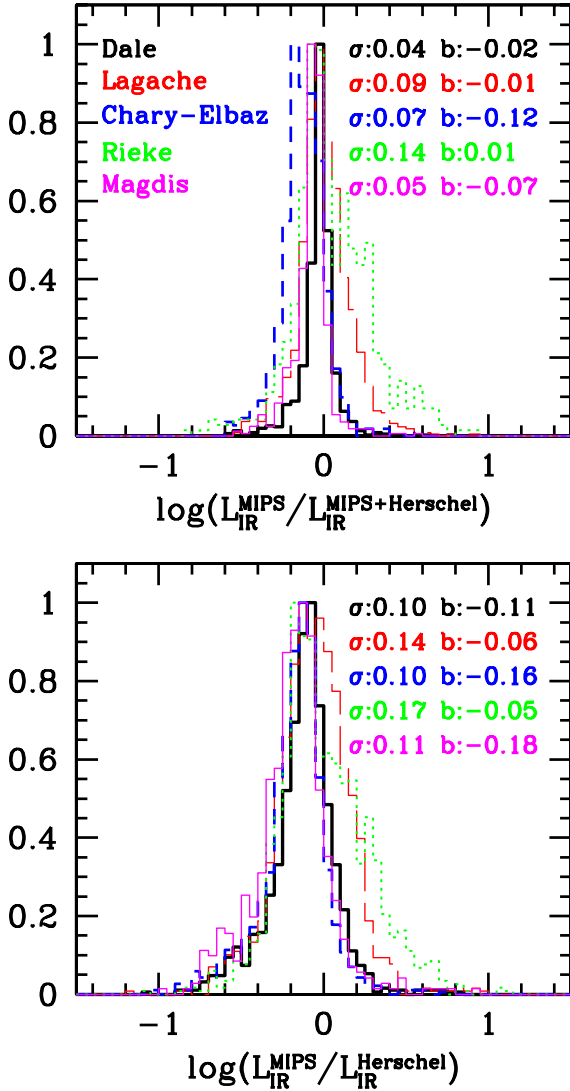
We estimate the SFR of our sample following exactly the same method as Arnouts et al. (2013). The total SFR is obtained by summing the contribution of the IR and UV light using Eq. (1) of Arnouts et al. (2013), i.e.  $SFR[M_{\odot}\text{yr}^{-1}] = 8.6 \times 10^{-11} (L_{\text{IR}} + 2.3L_{\text{NUV}})$ . The infrared luminosities  $L_{\text{IR}}^{\text{MIPS}}$  are extrapolated from the  $24\ \mu\text{m}$  fluxes using the Dale & Helou (2002) library following Le Floc’h et al. (2009). With this method, a given IR luminosity is associated to one template. In order to quantify the uncertainties generated by this extrapolation, we derive  $L_{\text{IR}}^{\text{MIPS+Herschel}}$  using a minimum of three bands (the  $24\ \mu\text{m}$ , one band from PACS and one from SPIRE) and we allow any template to be fitted. As shown in the top panel of Fig. 1, we find no systematic offset between  $L_{\text{IR}}^{\text{MIPS}}$  and  $L_{\text{IR}}^{\text{MIPS+Herschel}}$ . The dispersion between both measurements increases from 0.03 dex at  $z < 0.6$  to 0.12 at  $z > 1$ . Therefore, our extrapolation from the  $24\ \mu\text{m}$  flux assuming one SED for a given  $L_{\text{IR}}$  does not introduce significant uncertainties or biases. We also compare  $L_{\text{IR}}^{\text{MIPS}}$  and  $L_{\text{IR}}^{\text{Herschel}}$  ( $L_{\text{IR}}^{\text{Herschel}}$  is computed without using the  $24\ \mu\text{m}$  data) in order to use two independent estimates of the  $L_{\text{IR}}$ . Based on the scatter of  $L_{\text{IR}}^{\text{MIPS}} - L_{\text{IR}}^{\text{Herschel}}$ , we expect an uncertainty on the  $L_{\text{IR}}$  of 0.06 dex, 0.09 dex, and 0.13 dex at  $0.2 < z < 0.6$ ,  $0.6 < z < 1.0$ , and  $1 < z < 1.4$ , respectively. We observe a systematic offset of 0.1 dex between  $L_{\text{IR}}^{\text{Herschel}}$  and  $L_{\text{IR}}^{\text{MIPS}}$ , showing that one of the two estimates could be biased. As shown in Fig. 1, this offset is present for several sets of templates available in the literature. Such an offset could be partially explained by the combined uncertainties in the absolute calibration of MIPS and/or Herschel data<sup>2</sup>. Still, a systematic shift independent of the redshift does not affect our conclusions. Hereafter, we adopt the Dale & Helou (2002) templates and we use  $L_{\text{IR}}^{\text{MIPS+Herschel}}$  to get the total infrared luminosity.

Since AGN could contaminate the  $24\ \mu\text{m}$  emission and bias the stellar mass estimate, we remove the bright X-ray sources detected in XMM (Brusa et al. 2007). We keep the sources identified as IRAC power-laws (Donley et al. 2012), but we also perform the full analysis removing the IRAC power-laws without a noticeable change in our results.

In the GOODS field, we use the FIREWORKS data published by Wuyts et al. (2008). This catalogue reaches  $K < 24.3$  at  $5\sigma$  over  $138\ \text{arcmin}^2$ . We compute the photometric redshifts using Le Phare and the same method as the COSMOS field. We obtain photometric redshifts comparable to the ones of Wuyts et al. (2008) with a precision at  $\sigma_{\Delta z/(1+z)} = 0.03$  at  $i^+ < 24$ . The comparison is based on several spec- $z$  samples compiled

<sup>1</sup> The dispersion increases from 0.06 dex at  $0.2 < z < 0.4$  to 0.1 dex at  $1.2 < z < 1.4$  between Muzzin et al. (2013) and our own stellar masses, with a systematic shift of 0.05 dex. When considering the Brammer et al. (2011) catalogue, we find a similar dispersion and no systematic shift. Since the dispersion between two catalogues is the combination of both stellar mass uncertainties, the dispersion needs to be divided by  $\sqrt{2}$  to get the real uncertainties.

<sup>2</sup> A preliminary reduction of the MIPS data using the S18.0 SSC pipeline rather than the S12 pipeline show that a possible factor of 1.1 should be applied to our measured flux at  $24\ \mu\text{m}$  (Aussel et al., priv. comm.). Moreover, we observe differences reaching 30% between the  $24\ \mu\text{m}$  fluxes in published catalogues from the literature in GOODS and COSMOS (Wuyts et al. 2008; Le Floc’h et al. 2009; Muzzin et al. 2013; Magnelli et al. 2013). It shows that an uncertainty in the  $24\ \mu\text{m}$  total fluxes is plausible. Moreover, uncertainties in the absolute calibration of MIPS and Herschel are combined in this comparison.



**Fig. 1.** Comparison between the total infrared luminosities derived using only the  $24\ \mu\text{m}$  data ( $L_{\text{IR}}^{\text{MIPS}}$ ), using the combination of  $24\ \mu\text{m}$  and Herschel data ( $L_{\text{IR}}^{\text{MIPS+Herschel}}$ ), and using only Herschel data ( $L_{\text{IR}}^{\text{Herschel}}$ ). We indicate in each panel the dispersion ( $\sigma$ ) between both measurements and the median ( $b$ ) of the distribution. We provide a comparison for several sets of templates (Dale & Helou 2002; Chary & Elbaz 2001; Rieke et al. 2009; Lagache et al. 2004; Béthermin et al. 2012; following Magdis et al. 2012).

by Wuyts et al. (2008), including VVDS data from Le Fèvre et al. (2004) and K20 data from Mignoli et al. (2005). We apply exactly the same method as in COSMOS to derive the stellar masses. This catalogue also includes MIPS data. Following Wuyts et al. (2008), we apply a selection at  $F_{24\ \mu\text{m}} > 20\ \mu\text{Jy}$  in this catalogue. We also add the GOODS-Herschel data at 100 and  $160\ \mu\text{m}$  (Elbaz et al. 2011). The SFR is estimated following exactly the same method as for the COSMOS field.

### 3. Selecting the star-forming galaxies

In order to study the evolution of the main sequence, we need to identify star-forming and quiescent galaxies. The presence of a bimodal distribution in color (e.g., Bell et al. 2004; Faber et al. 2007; Franzetti et al. 2007; Smolčić et al. 2008; Fritz et al. 2014) or in the  $M_\star$ - $SFR$  plane (e.g., Peng et al. 2010) shows that galaxies are transitioning rapidly from a star-forming main sequence

to a red clump. Therefore, a quantitative criterion can be established to select the star-forming galaxies.

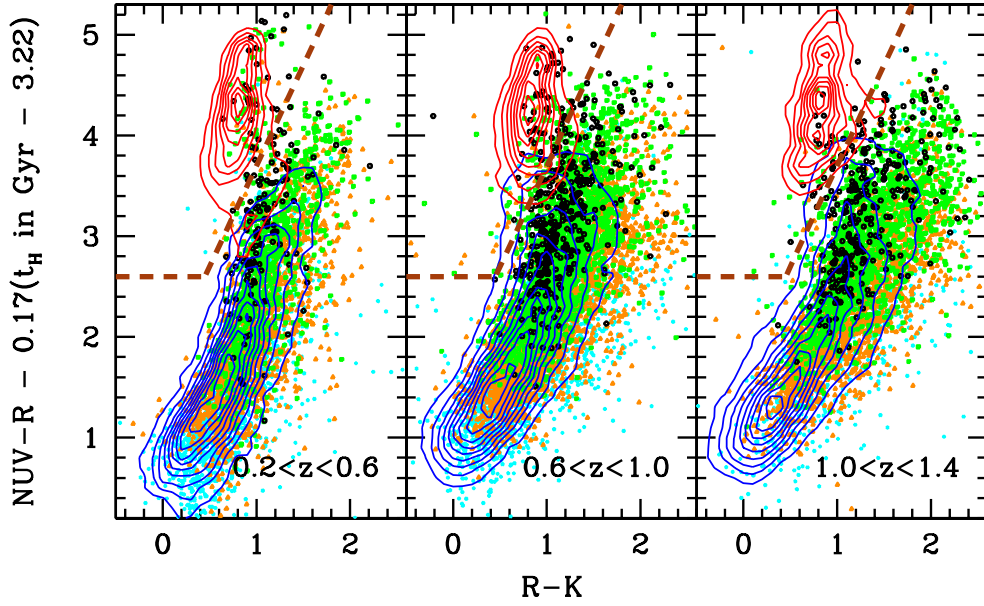
Williams et al. (2009) show that the combination of two rest-frame colors ( $M_U - M_V$ ,  $M_V - M_R$ ) is sufficient to separate quiescent and star-forming galaxies without mixing galaxies that are red because of dust extinction and the ones with a quenched star formation. We use a modified version of this selection criterion by combining the two rest-frame colors  $M_{\text{NUV}} - M_R$  and  $M_R - M_K$  following Arnouts et al. (2013). The absolute magnitudes are derived using the method described in Appendix B of Ilbert et al. (2005): in order to minimize the uncertainty induced by the k-correction term, the rest-frame luminosity at a given wavelength  $\lambda$  is derived from the apparent magnitude observed at  $\lambda(1+z)$ . Figure 2 shows the galaxy distribution in the  $NUV$ - $R$ - $K$  plane within the COSMOS field. The red clump is clearly isolated from the star-forming sequence by a lower density region in which galaxies transit rapidly. We establish a limit to separate the quiescent and the star-forming galaxies within this lower density region in the  $NUV$ - $R$ - $K$  plane. This limit changes with cosmic time because of the evolution of the stellar populations. In order to apply a single criterion at all redshifts to select the star-forming galaxies, we add a time dependent correction  $C$  to our selection criterion, with  $C = -0.17[t_H(z) - t_H(z=2)]$  if  $z < 2$  and  $t_H$  the age of the Universe at a given redshift in Gyr. The galaxies with  $(M_{\text{NUV}} - M_R) + C < 2.6$  and  $(M_{\text{NUV}} - M_R) + C < 2(M_R - M_K) + 1.7$  are considered to be star-forming. The considered limit is indicated with the brown dashed lines in Fig. 2. We note that the time correction  $C$  is established empirically to produce the cleanest separation between the red and blue regions<sup>3</sup>. The same criterion is applied to the GOODS sample, providing an equally good separation between the star-forming sequence and the red clump.

We find that 2% of the MIPS sources fall within the quiescent region at  $0.2 < z < 1.4$  (above the brown dashed lines). This  $24\ \mu\text{m}$  flux could be explained by the contribution of an AGN. Moreover, some post-starburst galaxies with a quenched star formation could still be seen in IR (e.g. Hayward et al. 2014). Therefore, we do not include the sources falling in the quiescent locus in our analysis. However, we have checked that including this population would not affect our conclusions.

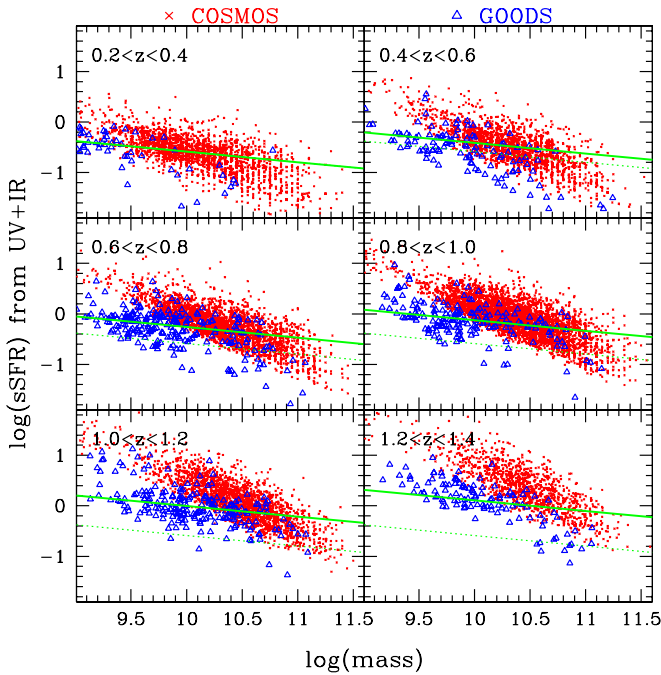
We emphasize the importance of using a two-color criterion to study the  $M_\star$ - $SFR$  relation for the most massive galaxies. We would remove a significant fraction of massive dust-extinguished star-forming galaxies from the main sequence by using a single-color criterion. For instance, we would lose 20% of the galaxies more massive than  $M_\star > 10^{10.5} M_\odot$  with a selection  $(M_{\text{NUV}} - M_R) > 3.5$ .

Finally, our color selection corresponds approximately to a cut in  $\log(sSFR_{\text{SED}})$  at  $-2$  (e.g. Ilbert et al. 2010) with  $sSFR_{\text{SED}}$  estimated using the template fitting procedure (blue and red contours in Fig. 2). We check with our dataset that 3–4% of all our star-forming sources at  $M_\star > 10^{9.5} M_\odot$  (not MIPS selected) have  $\log(sSFR_{\text{SED}}) < -2$  while 3–4% of the galaxies that we do not classified as star-forming have  $sSFR_{\text{SED}} > -2$ . The majority of these sources are located  $\pm 1$  dex around  $\log(sSFR) = -2$ . Therefore, our classification in colors is very similar to a classification in  $sSFR_{\text{SED}}$ .

<sup>3</sup> Having a theoretical justification of the correction is not possible since we do not know the mix of SFH and the ages of the galaxies around the transitioning area. Still, by using a BC03 template with an exponentially declining SFH and  $\tau = 3$  Gyr ( $\tau = 2$  Gyr), we would get a color correction of approximately  $-0.33$  ( $-0.2$ ) in  $(M_{\text{NUV}} - M_R)$  and  $-0.05$  ( $-0.06$ ) in  $(M_R - M_K)$ . Our applied empirical correction  $C$  falls in this range.



**Fig. 2.**  $NUV - R$  versus  $R - K$  rest-frame colors in the COSMOS field at  $0.2 < z < 1.4$  and  $\log(M_*/M_\odot) > 9.5$ . An additional term depending on the redshift is added to the  $NUV - R$  color in order to keep the same criterion to separate quiescent and star-forming galaxies valid at all redshifts (brown dashed lines). Cyan crosses, orange triangles, green squares and black circles correspond to galaxies with masses at  $\log(M_*) = 9.5-10$ ,  $10-10.5$ ,  $10.5-11$  and  $11-11.5$ , respectively. The red and blue contours indicate the distribution of the mass selected galaxies ( $\log(M_*/M_\odot) > 9.5$ ) with  $\log(sSFR)_{\text{SED}} < -2$  and  $\log(sSFR)_{\text{SED}} > -2$ , respectively.



**Fig. 3.**  $sSFR$  as a function of the stellar mass in the GOODS (blue triangles) and COSMOS (red crosses) fields with the  $SFR$  measured from the UV and IR data. The green dashed lines are obtained using the parametrization obtained by Sargent et al. (2012). The green dashed line corresponds to the relation at  $0.2 < z < 0.4$ .

#### 4. Measurement and fit of the $sSFR$ functions

In this section, we describe the method used to derive the  $sSFR$  functions per stellar mass bin. We discuss the possible selection effects in the mass- $sSFR$  plan shown in Fig. 3 and correct for them when necessary (mainly the  $24\ \mu\text{m}$  flux limit since we

are complete in stellar mass). We assume two possible profiles for the  $sSFR$  functions (a log-normal function and a double exponential function). Figure 4 shows the  $sSFR$  functions, and the best-fit parameters are given in Tables 1 and 2.

##### 4.1. The mass- $sSFR$ scatter diagram

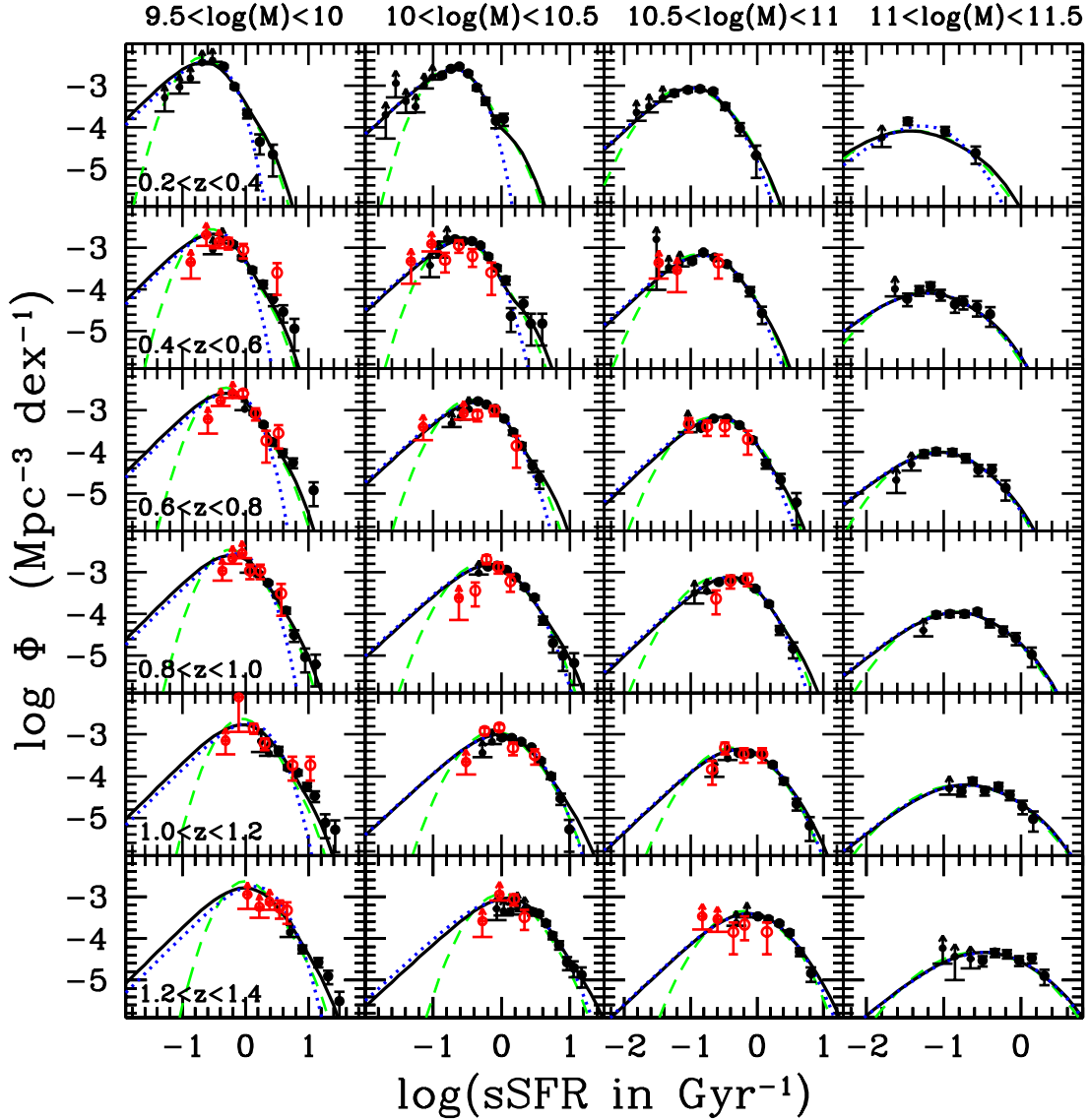
Figure 3 shows the distribution of the  $sSFR$  as a function of the stellar mass for star-forming galaxies in the COSMOS field (red crosses) and in the GOODS field (blue triangles). Since GOODS covers a small volume with a deep NIR coverage, this sample includes preferentially low-mass galaxies at  $z < 1$ , while COSMOS which covers an area  $\times 30$  larger includes rare and massive sources. This difference explains why the GOODS and the COSMOS samples cover a different mass range in Fig. 3. Still, the  $sSFR$  values of the COSMOS survey are larger than the values found in the GOODS field for masses  $M_* < 10^{10} M_\odot$ . This effect is explained by the  $\times 3$  difference in sensitivity between the two MIPS surveys. While the COSMOS survey includes mostly starbursting sources at low masses, the GOODS survey is able to reach the bulk of the star-forming population. We will discuss in more detail this selection effect in Sect. 7 using a semi-analytical model.

The green solid line corresponds to the relation

$$\log(sSFR) = -7.81 - 0.21 \times \log(M^*) + 2.8 \times \log(1+z) \quad (1)$$

established using the mass dependency of the  $sSFR$  of  $-0.21$  provided by Rodighiero et al. (2011), as well as the normalization of the main sequence at  $z \sim 2$  from the same analysis. We assume an evolution in  $(1+z)^{2.8}$  from Sargent et al. (2012). The position of our GOODS data agrees with this relation. However, such parametrization is not suitable for the COSMOS field. It demonstrates the need for a statistical study taking into account selection effects.





**Fig. 4.**  $sSFR$  functions per redshift bin from  $0.2 < z < 0.4$  to  $1.2 < z < 1.4$  (from the top to the bottom rows) and per stellar mass bin from  $9.5 < \log(M_*) < 10$  to  $11 < \log(M_*) < 11.5$  (from the left to the right columns). The non-parametric data have been obtained using the  $1/V_{\max}$  estimator. The black filled and red open circles correspond to the COSMOS and GOODS fields, respectively. The arrows correspond to the lower limits obtained with the  $1/V_{\max}$ . The black solid lines and green dashed lines correspond to the best-fit functions assuming a double-exponential and a log-normal profile, respectively. Both include a starburst component (see details in Sect. 4.2). The blue dotted lines correspond to the double-exponential fit without considering the starburst component.

#### 4.2. Methodology to estimate the non-parametric $sSFR$ functions

In order to fully characterize the evolution and the shape of the main sequence, we measure the  $sSFR$  function, i.e., the number density in a comoving volume (in  $\text{Mpc}^{-3}$ ) and per logarithmic bin of  $sSFR$  (in  $\text{dex}^{-1}$ ). We derive the  $sSFR$  function per stellar mass and redshift bin. We divide the star-forming sample into 6 redshift bins with  $\Delta z = 0.2$  and four stellar mass bins  $\log(M_*) = 9.5\text{--}10$  dex,  $10\text{--}10.5$ ,  $10.5\text{--}11$ ,  $11\text{--}11.5$ .

We note that the  $sSFR$  functions are measured per stellar mass bin of 0.5 dex. Therefore, one has to multiply their normalization by 2 in order to express the density per logarithmic bin of  $sSFR$  and per logarithmic bin of  $M_*$  simultaneously, i.e., in  $\text{Mpc}^{-3} \text{ dex}^{-2}$  (a bivariable galaxy mass and  $sSFR$  function).

In order to take into account the flux limit at  $24 \mu\text{m}$  ( $F_{24 \mu\text{m}} > 20 \mu\text{Jy}$  in GOODS and  $F_{24 \mu\text{m}} > 60 \mu\text{Jy}$  in COSMOS), we adopt

standard estimators as the  $1/V_{\max}$  (Schmidt 1968), the SWML (Efsthathiou 1988) and the  $C^+$  (Lynden-Bell 1971). These estimators are included in the tool ALF used to compute the  $sSFR$  function, as described in Appendix B of Ilbert et al. (2005).

Because of the depth of the COSMOS optical and NIR images, we do not need to consider any incompleteness in stellar mass. Indeed, only 4% and 0.5% of the galaxies are fainter than  $i > 25.5$  and  $m(3.6) > 24$  (this magnitude limits are 0.5–1 mag brighter than the magnitude limit of our survey) in the most incomplete bin  $M_* < 10^{10} M_\odot$  and  $z > 1.2$ . Only 2% of the star-forming galaxies would require a  $1/V_{\max}$  correction in this bin for our considered limits in NIR. Therefore, the samples considered in this analysis are complete in mass. Since the GOODS data are deeper than the COSMOS data in optical, the GOODS sample is also complete in stellar mass at  $M_* > 10^{9.5} M_\odot$  and  $z < 1.4$ .

We define  $sSFR$  limits, denoted  $sSFR_{\text{complete}}$ , above which we can safely correct for selection effects. As shown in

**Table 1.** Best-fit parameters assuming a double exponential profile fitted over the  $1/V_{\max}$  non-parametric  $sSFR$  functions.

$M_*$ bin	$z$ -bin	$N$ COSMOS		$\log(sSFR^*)$ (Gyr $^{-1}$ )	$\Phi^*$ ( $10^{-3}$ Mpc $^{-3}$ )	Median	Average	$\chi^2$
		+ GOODS	$\sigma$			$\log(sSFR)$ (Gyr $^{-1}$ )	$\log(sSFR)$ (Gyr $^{-1}$ )	
9.5–10	combined		0.217 $^{+0.016}_{-0.016}$	-1.028 $^{+0.069}_{-0.067}$	2.912 $^{+0.583}_{-0.464}$	-1.069 $^{+0.012}_{-0.012}$	-0.940 $^{+0.007}_{-0.008}$	154.021
	0.2–0.4	1080+0	0.22	-0.704 $^{+0.012}_{-0.013}$	9.377 $^{+0.222}_{-0.219}$	-0.733 $^{+0.012}_{-0.012}$	-0.602 $^{+0.012}_{-0.012}$	29.228
	0.4–0.6	643+45	0.22	-0.562 $^{+0.014}_{-0.014}$	5.520 $^{+0.118}_{-0.117}$	-0.591 $^{+0.014}_{-0.012}$	-0.460 $^{+0.014}_{-0.014}$	9.621
	0.6–0.8	1009+92	0.22	-0.347 $^{+0.010}_{-0.011}$	6.624 $^{+0.105}_{-0.105}$	-0.375 $^{+0.010}_{-0.010}$	-0.245 $^{+0.010}_{-0.010}$	14.771
	0.8–1.0	1111+61	0.22	-0.258 $^{+0.010}_{-0.010}$	6.815 $^{+0.092}_{-0.092}$	-0.285 $^{+0.010}_{-0.010}$	-0.156 $^{+0.010}_{-0.010}$	21.068
	1.0–1.2	546+60	0.22	-0.072 $^{+0.015}_{-0.016}$	4.660 $^{+0.070}_{-0.070}$	-0.099 $^{+0.014}_{-0.016}$	0.030 $^{+0.015}_{-0.015}$	31.262
	1.2–1.4	180+29	0.22	-0.028 $^{+0.023}_{-0.026}$	4.602 $^{+0.064}_{-0.064}$	-0.057 $^{+0.024}_{-0.022}$	0.073 $^{+0.024}_{-0.024}$	9.320
10–10.5	combined		0.184 $^{+0.010}_{-0.011}$	-1.018 $^{+0.046}_{-0.045}$	4.183 $^{+0.563}_{-0.473}$	-1.177 $^{+0.006}_{-0.008}$	-1.060 $^{+0.005}_{-0.006}$	324.531
	0.2–0.4	991+0	0.100 $^{+0.014}_{-0.000}$	-0.230 $^{+0.012}_{-0.078}$	28.446 $^{+0.706}_{-6.068}$	-0.765 $^{+0.012}_{-0.012}$	-0.671 $^{+0.012}_{-0.012}$	18.421
	0.4–0.6	1193+31	0.126 $^{+0.025}_{-0.026}$	-0.229 $^{+0.145}_{-0.124}$	12.144 $^{+6.500}_{-3.620}$	-0.631 $^{+0.016}_{-0.018}$	-0.532 $^{+0.013}_{-0.014}$	41.747
	0.6–0.8	1698+44	0.183 $^{+0.021}_{-0.022}$	-0.270 $^{+0.097}_{-0.090}$	5.883 $^{+1.819}_{-1.264}$	-0.431 $^{+0.016}_{-0.016}$	-0.314 $^{+0.012}_{-0.012}$	15.312
	0.8–1.0	2239+40	0.213 $^{+0.018}_{-0.019}$	-0.180 $^{+0.078}_{-0.074}$	4.277 $^{+0.970}_{-0.735}$	-0.233 $^{+0.014}_{-0.014}$	-0.105 $^{+0.011}_{-0.011}$	41.264
	1.0–1.2	1570+71	0.217 $^{+0.021}_{-0.022}$	-0.044 $^{+0.092}_{-0.087}$	2.807 $^{+0.757}_{-0.549}$	-0.081 $^{+0.018}_{-0.018}$	0.048 $^{+0.013}_{-0.013}$	40.360
	1.2–1.4	828+34	0.170 $^{+0.087}_{-0.067}$	0.245 $^{+0.339}_{-0.402}$	4.428 $^{+7.457}_{-2.210}$	0.033 $^{+0.578}_{-0.134}$	0.146 $^{+0.578}_{-0.133}$	8.663
10.5–11	combined		0.274 $^{+0.012}_{-0.012}$	-1.605 $^{+0.049}_{-0.049}$	1.566 $^{+0.198}_{-0.173}$	-1.453 $^{+0.012}_{-0.010}$	-1.300 $^{+0.007}_{-0.007}$	157.307
	0.2–0.4	539+0	0.269 $^{+0.039}_{-0.042}$	-1.156 $^{+0.160}_{-0.149}$	1.474 $^{+0.773}_{-0.460}$	-1.019 $^{+0.030}_{-0.030}$	-0.869 $^{+0.023}_{-0.024}$	4.849
	0.4–0.6	697+11	0.265 $^{+0.035}_{-0.037}$	-0.981 $^{+0.141}_{-0.136}$	1.165 $^{+0.517}_{-0.331}$	-0.855 $^{+0.024}_{-0.028}$	-0.708 $^{+0.020}_{-0.020}$	11.454
	0.6–0.8	1019+28	0.230 $^{+0.031}_{-0.032}$	-0.631 $^{+0.127}_{-0.123}$	1.601 $^{+0.650}_{-0.431}$	-0.623 $^{+0.020}_{-0.022}$	-0.490 $^{+0.015}_{-0.015}$	25.423
	0.8–1.0	1466+23	0.223 $^{+0.027}_{-0.028}$	-0.436 $^{+0.116}_{-0.113}$	2.008 $^{+0.704}_{-0.487}$	-0.455 $^{+0.020}_{-0.022}$	-0.324 $^{+0.014}_{-0.015}$	38.968
	1.0–1.2	947+31	0.280 $^{+0.031}_{-0.032}$	-0.496 $^{+0.131}_{-0.124}$	0.699 $^{+0.252}_{-0.170}$	-0.323 $^{+0.028}_{-0.028}$	-0.167 $^{+0.020}_{-0.020}$	23.345
	1.2–1.4	885+17	0.281 $^{+0.034}_{-0.035}$	-0.345 $^{+0.137}_{-0.132}$	0.639 $^{+0.255}_{-0.171}$	-0.169 $^{+0.030}_{-0.028}$	-0.013 $^{+0.020}_{-0.021}$	19.457
11–11.5	combined		0.420 $^{+0.029}_{-0.029}$	-2.565 $^{+0.110}_{-0.114}$	0.419 $^{+0.121}_{-0.094}$	-1.933 $^{+0.028}_{-0.028}$	-1.691 $^{+0.026}_{-0.026}$	51.328
	0.2–0.4	100+0	0.481 $^{+0.130}_{-0.118}$	-2.297 $^{+0.414}_{-0.530}$	0.026 $^{+0.046}_{-0.029}$	-1.455 $^{+0.128}_{-0.134}$	-1.161 $^{+0.194}_{-0.154}$	16.792
	0.4–0.6	132+0	0.425 $^{+0.102}_{-0.101}$	-1.894 $^{+0.349}_{-0.387}$	0.040 $^{+0.057}_{-0.024}$	-1.245 $^{+0.078}_{-0.086}$	-1.000 $^{+0.117}_{-0.093}$	6.035
	0.6–0.8	200+0	0.359 $^{+0.073}_{-0.075}$	-1.508 $^{+0.269}_{-0.276}$	0.077 $^{+0.075}_{-0.036}$	-1.077 $^{+0.056}_{-0.062}$	-0.878 $^{+0.056}_{-0.053}$	2.084
	0.8–1.0	315+0	0.385 $^{+0.060}_{-0.062}$	-1.370 $^{+0.232}_{-0.239}$	0.073 $^{+0.052}_{-0.029}$	-0.857 $^{+0.052}_{-0.056}$	-0.641 $^{+0.043}_{-0.043}$	2.618
	1.0–1.2	199+0	0.438 $^{+0.084}_{-0.088}$	-1.420 $^{+0.358}_{-0.360}$	0.028 $^{+0.032}_{-0.014}$	-0.727 $^{+0.084}_{-0.092}$	-0.471 $^{+0.067}_{-0.066}$	7.740
	1.2–1.4	194+0	0.413 $^{+0.087}_{-0.103}$	-1.116 $^{+0.438}_{-0.399}$	0.026 $^{+0.037}_{-0.022}$	-0.509 $^{+0.114}_{-0.114}$	-0.272 $^{+0.067}_{-0.072}$	10.272

**Notes.** In the lowest stellar mass bin  $9.5 < \log(M_*) < 10$ , we set the value of  $\sigma$  which is not constrained. Systematic uncertainties are not included. We consider that a systematic uncertainty of  $\pm 0.1$  dex could affect SFR measurement (see Sect. 2). Assuming a systematic uncertainty of  $\pm 0.1$  dex in the stellar mass, we obtain a systematic uncertainty of  $^{+0.14}_{-0.1}$  in the  $\log(sSFR^*)$ , the median and the averaged  $sSFR$  estimates.

Ilbert et al. (2004), if a galaxy population is not observable anymore below a given  $sSFR$ , denoted  $sSFR_{\text{complete}}$ , the standard estimators cannot correct for this missing population. Moreover, the various estimators are biased differently below  $sSFR_{\text{complete}}$ . We adopt the following definition:  $sSFR_{\text{complete}}$  is the  $sSFR$  for which 90% of the galaxies have their  $sSFR_{\text{limit}} < sSFR_{\text{complete}}$ , with  $sSFR_{\text{limit}}$  being the lowest  $sSFR$  observable for each galaxy given the  $24 \mu\text{m}$  flux limit. Following this procedure, not more than 10% of the galaxies could be missed at  $sSFR > sSFR_{\text{complete}}$ . We also restrict our analysis to the  $sSFR$  range where the 3 non-parametric estimators produce consistent results. We will use the  $1/V_{\max}$  estimator in this paper, but the results would be the same at  $sSFR > sSFR_{\text{complete}}$  using the other estimators. One advantage of the  $1/V_{\max}$  estimator is that it produces a lower limit in density at  $sSFR < sSFR_{\text{complete}}$  (Ilbert et al. 2004). Therefore, we conserve this important information and use the  $1/V_{\max}$  estimator as lower limits when possible (the lower limits are shown with arrows in Fig. 4).

Star-forming sources with an extreme dust attenuation could be missing in the parent optical photometric catalogue. Indeed,

Le Floch et al. (2009) do not find any optical counterpart for 10% of the MIPS sources. Given our survey limits, we establish that these missing sources are redder than  $m_R - m_{24} > 7.6$  (or fake MIPS detections). Dey et al. (2008) and Riguccini et al. (2011) show that  $>85\%$  galaxies selected with such color criteria are located at  $z > 1.4$ , i.e., above the maximum redshift considered in our study.

Finally, the GOODS field ( $138 \text{ arcmin}^2$ ) covers a smaller area than the COSMOS field ( $1.5 \text{ deg}^2$ ), the uncertainties due to the cosmic variance reach  $\sigma = 0.21\text{--}0.37$  (for  $\log(M_*) = 9.75\text{--}11.25$ ) at  $z \sim 0.9$  in the GOODS field and  $\sigma = 0.09\text{--}0.15$  in the COSMOS field (Moster et al. 2011). Therefore, we use COSMOS as the anchor for the normalization of the  $sSFR$  functions. We adjust the normalization of the  $sSFR$  functions in the GOODS field by applying the following factors to the normalization: 1.243, 0.7653, 0.7605, 1.305, 0.9264 and 1.186 in the redshift bins 0.2–0.4, 0.4–0.6, 0.6–0.8, 0.8–1, 1–1.2 and 1.2–1.4, respectively. These factors are derived from the ratio between the redshift distributions of the two fields for a same magnitude selection limit.



**Table 2.** Best-fit parameters assuming a log-normal function over the  $1/V_{\max}$  non-parametric  $sSFR$  functions.

$M_{\star}$ bin	$z$ -bin	$N$ COSMOS		$\log(sSFR^*)$ (Gyr $^{-1}$ )	$\Phi^*$ ( $10^{-3}$ Mpc $^{-3}$ )	Median	Average	$\chi^2$
		+ GOODS	$\sigma$			$\log(sSFR)$ (Gyr $^{-1}$ )	$\log(sSFR)$ (Gyr $^{-1}$ )	
9.5–10	combined		$0.280^{+0.011}_{-0.010}$	$-1.037^{+0.013}_{-0.014}$	$0.970^{+0.010}_{-0.010}$	$-1.027^{+0.012}_{-0.014}$	$-0.913^{+0.008}_{-0.009}$	158.167
	0.2–0.4	1080+0	0.27	$-0.685^{+0.012}_{-0.012}$	$3.209^{+0.077}_{-0.077}$	$-0.675^{+0.012}_{-0.012}$	$-0.567^{+0.012}_{-0.012}$	16.010
	0.4–0.6	643 +45	0.27	$-0.549^{+0.013}_{-0.014}$	$1.912^{+0.041}_{-0.041}$	$-0.539^{+0.012}_{-0.012}$	$-0.430^{+0.013}_{-0.013}$	13.148
	0.6–0.8	1009+92	0.27	$-0.328^{+0.010}_{-0.010}$	$2.296^{+0.037}_{-0.037}$	$-0.319^{+0.010}_{-0.010}$	$-0.209^{+0.010}_{-0.010}$	16.896
	0.8–1.0	1111+61	0.27	$-0.239^{+0.009}_{-0.010}$	$2.362^{+0.032}_{-0.032}$	$-0.229^{+0.010}_{-0.010}$	$-0.120^{+0.009}_{-0.009}$	23.470
	1.0–1.2	546 +60	0.27	$-0.056^{+0.015}_{-0.016}$	$1.614^{+0.024}_{-0.024}$	$-0.047^{+0.016}_{-0.014}$	$0.063^{+0.015}_{-0.015}$	38.485
	1.2–1.4	180 +29	0.27	$-0.002^{+0.022}_{-0.026}$	$1.596^{+0.022}_{-0.022}$	$0.009^{+0.022}_{-0.024}$	$0.117^{+0.023}_{-0.023}$	10.858
10–10.5	combined		$0.307^{+0.005}_{-0.005}$	$-1.194^{+0.008}_{-0.008}$	$0.956^{+0.010}_{-0.010}$	$-1.183^{+0.008}_{-0.008}$	$-1.053^{+0.006}_{-0.006}$	390.506
	0.2–0.4	991 +0	$0.262^{+0.013}_{-0.012}$	$-0.736^{+0.015}_{-0.018}$	$1.813^{+0.049}_{-0.047}$	$-0.727^{+0.014}_{-0.018}$	$-0.622^{+0.012}_{-0.013}$	43.939
	0.4–0.6	1193+31	$0.278^{+0.012}_{-0.011}$	$-0.645^{+0.020}_{-0.021}$	$1.249^{+0.034}_{-0.033}$	$-0.635^{+0.020}_{-0.020}$	$-0.522^{+0.015}_{-0.016}$	64.749
	0.6–0.8	1698+44	$0.302^{+0.011}_{-0.010}$	$-0.445^{+0.015}_{-0.016}$	$1.344^{+0.028}_{-0.028}$	$-0.433^{+0.014}_{-0.016}$	$-0.307^{+0.012}_{-0.012}$	23.998
	0.8–1.0	2239+40	$0.328^{+0.010}_{-0.010}$	$-0.256^{+0.015}_{-0.016}$	$1.379^{+0.025}_{-0.025}$	$-0.245^{+0.016}_{-0.014}$	$-0.102^{+0.011}_{-0.011}$	60.545
	1.0–1.2	1570+71	$0.323^{+0.012}_{-0.011}$	$-0.103^{+0.017}_{-0.017}$	$0.951^{+0.019}_{-0.019}$	$-0.091^{+0.016}_{-0.018}$	$0.048^{+0.012}_{-0.013}$	40.119
	1.2–1.4	828 +34	$0.298^{+0.034}_{-0.030}$	$0.002^{+0.038}_{-0.045}$	$0.863^{+0.017}_{-0.017}$	$0.013^{+0.038}_{-0.044}$	$0.138^{+0.023}_{-0.025}$	10.214
10.5–11	combined		$0.385^{+0.009}_{-0.008}$	$-1.504^{+0.013}_{-0.013}$	$0.948^{+0.010}_{-0.010}$	$-1.491^{+0.014}_{-0.012}$	$-1.307^{+0.008}_{-0.008}$	218.529
	0.2–0.4	539 +0	$0.379^{+0.025}_{-0.023}$	$-1.056^{+0.034}_{-0.037}$	$0.838^{+0.034}_{-0.034}$	$-1.041^{+0.032}_{-0.038}$	$-0.863^{+0.026}_{-0.027}$	10.334
	0.4–0.6	697 +11	$0.367^{+0.026}_{-0.021}$	$-0.878^{+0.030}_{-0.039}$	$0.636^{+0.024}_{-0.022}$	$-0.865^{+0.030}_{-0.038}$	$-0.696^{+0.021}_{-0.025}$	19.190
	0.6–0.8	1019+28	$0.362^{+0.031}_{-0.027}$	$-0.660^{+0.039}_{-0.046}$	$0.611^{+0.023}_{-0.022}$	$-0.647^{+0.038}_{-0.044}$	$-0.481^{+0.022}_{-0.025}$	49.577
	0.8–1.0	1466+23	$0.384^{+0.017}_{-0.017}$	$-0.553^{+0.029}_{-0.029}$	$0.740^{+0.019}_{-0.019}$	$-0.539^{+0.030}_{-0.028}$	$-0.356^{+0.019}_{-0.018}$	66.046
	1.0–1.2	947 +31	$0.379^{+0.019}_{-0.018}$	$-0.368^{+0.028}_{-0.028}$	$0.452^{+0.013}_{-0.013}$	$-0.355^{+0.028}_{-0.028}$	$-0.176^{+0.019}_{-0.020}$	28.941
	1.2–1.4	885 +17	$0.371^{+0.023}_{-0.021}$	$-0.202^{+0.028}_{-0.030}$	$0.415^{+0.012}_{-0.012}$	$-0.187^{+0.026}_{-0.030}$	$-0.016^{+0.020}_{-0.020}$	22.440
11–11.5	0.1–0.2		$0.463^{+0.024}_{-0.022}$	$-1.953^{+0.027}_{-0.029}$	$0.971^{+0.010}_{-0.010}$	$-1.937^{+0.028}_{-0.028}$	$-1.686^{+0.025}_{-0.025}$	50.587
	0.2–0.4	100+0	$0.478^{+0.129}_{-0.099}$	$-1.456^{+0.118}_{-0.129}$	$0.101^{+0.012}_{-0.012}$	$-1.433^{+0.118}_{-0.126}$	$-1.167^{+0.172}_{-0.147}$	16.654
	0.4–0.6	132+0	$0.442^{+0.086}_{-0.070}$	$-1.243^{+0.077}_{-0.089}$	$0.095^{+0.008}_{-0.008}$	$-1.227^{+0.078}_{-0.088}$	$-0.995^{+0.099}_{-0.083}$	5.850
	0.6–0.8	200+0	$0.401^{+0.057}_{-0.049}$	$-1.076^{+0.059}_{-0.067}$	$0.102^{+0.006}_{-0.006}$	$-1.061^{+0.058}_{-0.066}$	$-0.865^{+0.051}_{-0.052}$	1.891
	0.8–1.0	315+0	$0.434^{+0.051}_{-0.045}$	$-0.871^{+0.056}_{-0.063}$	$0.121^{+0.007}_{-0.007}$	$-0.855^{+0.054}_{-0.062}$	$-0.631^{+0.043}_{-0.044}$	2.934
	1.0–1.2	199+0	$0.502^{+0.075}_{-0.063}$	$-0.779^{+0.081}_{-0.085}$	$0.078^{+0.005}_{-0.005}$	$-0.761^{+0.080}_{-0.084}$	$-0.472^{+0.069}_{-0.065}$	7.464
	1.2–1.4	194+0	$0.489^{+0.070}_{-0.061}$	$-0.570^{+0.091}_{-0.095}$	$0.058^{+0.004}_{-0.004}$	$-0.551^{+0.088}_{-0.094}$	$-0.276^{+0.062}_{-0.067}$	9.662

**Notes.** In the lowest stellar mass bin  $9.5 < \log(M_{\star}) < 10$ , we are not able to constrain the value of  $\sigma$  which is fixed. As in Table 1, a systematic uncertainty of  $^{+0.14}_{-0.1}$  in the  $\log(sSFR^*)$ , the median and the averaged  $sSFR$  estimates should be added to the given uncertainties.

#### 4.3. Parametric fit of the $sSFR$ functions

We fit simultaneously the  $1/V_{\max}$  data of the COSMOS and GOODS fields. We consider two possible profiles: a log-normal function and a double exponential function. The log-normal function is parametrized as:

$$\phi(sSFR) = \frac{\Phi^*}{\sigma\sqrt{2\pi}} \exp\left(-\frac{\log_{10}^2(sSFR/sSFR^*)}{2\sigma^2}\right) \quad (2)$$

with  $\Phi^*$  the normalization factor,  $sSFR^*$  the characteristic  $sSFR$ , and  $\sigma$  the standard deviation. We also consider a double-exponential profile (e.g., Saunders et al. 1990; Le Floc'h et al. 2005),

$$\phi(sSFR) = \Phi^* \left(\frac{sSFR}{sSFR^*}\right)^{1-\alpha} \exp\left(-\frac{\log_{10}^2(1 + \frac{sSFR}{sSFR^*})}{2\sigma^2}\right) \quad (3)$$

with  $\alpha$  the faint-end slope. While the double-exponential profile is not commonly used to describe the  $sSFR$  distribution, it

allows for a significant density of star-forming galaxies with a low  $sSFR$ .

In order to take into account the uncertainties on the  $sSFR$ , we convolve these profiles with a Gaussian function having a standard deviation  $\sigma = 0.06, 0.07, 0.08, 0.11, 0.14$  and  $0.17$  dex at  $z = 0.2-0.4$ ,  $z = 0.4-0.6$ ,  $z = 0.6-0.8$ ,  $z = 0.8-1.0$ ,  $z = 1.0-1.2$ , and  $z = 1.2-1.4$ , respectively. These values are obtained by summing in quadrature the statistical uncertainties expected for the SFR and the stellar masses, as estimated in Sect. 2 (systematic uncertainties are not included). We note that  $\phi_c$  is the convolved profile.

We add a starburst component to the  $sSFR$  function to produce a better fit of the  $1/V_{\max}$  data at high  $sSFR$ . Since the contribution of the starbursts cannot be constrained in each individual bin of redshift and stellar mass, we set their contribution following Sargent et al. (2012). We assume that the starbursts are distributed with a log-normal distribution having  $\sigma = 0.25$  and centered on the median  $sSFR$  shifted by  $+0.6$  dex. We set the starburst contribution to be 3% of the total density of star-forming galaxies.

We fit the  $1/V_{\max}$  data measured in the stellar mass bin  $[M_{\star}^{\min}; M_{\star}^{\max}]$  by minimizing the  $\chi^2$  value defined as:

$$\chi^2 = \sum_{i=1,N}^{e_{\Phi_i}^{V_{\max}} > 0} \left( \frac{\phi_c(sSFR_i) - \Phi_i^{V_{\max}}}{e_{\Phi_i}^{V_{\max}}} \right)^2 + \sum_{i=1,N}^{e_{\Phi_i}^{V_{\max}} < 0 \text{ \& } \phi_c(sSFR_i) < \Phi_i^{V_{\max}}} \left( \frac{\phi_c(sSFR_i) - \Phi_i^{V_{\max}}}{e_{\Phi_i}^{V_{\max}}} \right)^2 + \left( \frac{\int_0^\infty \phi_c(sSFR) d(sSFR) - GSMF_{SF} \times \Delta M}{e_{GSMF_{SF}}} \right)^2 \quad (4)$$

with  $\phi_c$  being the function that we fit,  $\Phi_i^{V_{\max}}$  the density at  $sSFR_i$  estimated with the  $1/V_{\max}$  estimator, and  $e_{\Phi_i}^{V_{\max}}$  its associated Poisson errors;  $N$  corresponds to the number of bins in  $sSFR$ . Equation (4) contains three components:

- the first term of the equation corresponds to the standard  $\chi^2$  minimization method;
- the second term accounts for the lower limits obtained with the  $1/V_{\max}$  estimator below the completeness limit. The negative error  $e_{\Phi_i}^{V_{\max}}$  indicates that the density is a lower limit;
- the third term includes an additional constraint using the galaxy stellar mass function of the star-forming galaxies, denoted  $GSMF_{SF}$ . Indeed, the  $sSFR$  function integrated over the full  $sSFR$  range should match the  $GSMF_{SF}$  integrated over the considered mass bin  $[\log(M_{\star}^{\min}), \log(M_{\star}^{\max})]$  with  $\Delta M = \log(M_{\star}^{\max}) - \log(M_{\star}^{\min})$ . Since we slightly modified the method used Ilbert et al. (2013) to compute the stellar masses, and since we are not using the same parent photometric catalogue, we recompute the  $GSMF_{SF}$  in each mass/redshift bin with this sample for the sake of consistency.

The best-fit parameters are given in Tables 1 and 2 for the double-exponential and the log-normal functions, respectively. We also add the values of the median and average  $sSFR$  in these tables. We caution that the median and average  $sSFR$  are different, even for a log-normal function.

We find that adding the starburst component is necessary in the mass bin  $9.5 < \log(M_{\star}) < 10$  to reproduce the high  $sSFR$  end, while we could ignore it above  $\log(M_{\star}) > 10.5$  (black solid lines and blue dotted lines in Fig. 4).

Despite the combination of GOODS and COSMOS data, we are not able to directly constrain the full shape of the  $sSFR$  function. In most of the redshift and mass bins, the  $sSFR$  function is incomplete below the peak in  $sSFR$ . The lower limits obtained with the  $1/V_{\max}$  estimator at low  $sSFR$  (the arrows in Fig. 4) indicate the minimum possible densities, which is important in order to discriminate between a log-normal and a double-exponential profile. In most of the mass and redshift bins, we do not sample sufficiently low  $sSFR$  to see any advantage of using either one or the other parametrization. The fit with a double-exponential function is more suitable than the log-normal function at  $0.2 < z < 0.6$  and  $10 < \log(M_{\star}) < 11$  (see Fig. 4). In these bins, the lower limits favor a double-exponential parametrization. Moreover, the position of the best-fit  $sSFR$  peak is in better agreement with the non-parametric data using a double-exponential profile.

Adding the  $GSMF_{SF}$  information into Eq. (4) brings an important constraint on the  $sSFR$  distribution, not visible by a simple examination of the fit. For instance, a higher value of the

**Table 3.** Best-fit parameters describing the  $sSFR$  evolution as a function of redshift and mass following the parametrization given in Eq. (5).

Mass bin	$a$	$\beta$	$b$
double-exponential			
all	$-1.07 \pm 0.02$	$-0.172 \pm 0.007$	$3.14 \pm 0.07$
9.5–10.0	$-1.07 \pm 0.03$		$2.88 \pm 0.12$
10–10.5	$-1.17 \pm 0.02$		$3.31 \pm 0.10$
10.5–11	$-1.45 \pm 0.04$		$3.52 \pm 0.15$
11–11.5	$-1.92 \pm 0.16$		$3.78 \pm 0.60$
log-normal			
all	$-1.02 \pm 0.02$	$-0.201 \pm 0.008$	$3.09 \pm 0.07$
9.5–10.0	$-1.01 \pm 0.02$		$2.88 \pm 0.12$
10–10.5	$-1.12 \pm 0.02$		$3.12 \pm 0.10$
10.5–11	$-1.46 \pm 0.04$		$3.44 \pm 0.16$
11–11.5	$-1.85 \pm 0.15$		$3.50 \pm 0.50$

slope  $\alpha$  of the  $sSFR$  function in the case of a double-exponential fit will overproduce the density of star-forming galaxies. Even with this constraint, the uncertainties on  $\alpha$  remain large and  $\alpha$  varies between  $-1$  and  $0.5$  when left free. Therefore, we arbitrarily set its value at  $\alpha = -0.5$  which is suitable in all the mass/redshift bins.

## 5. Evolution of the $sSFR$ functions

In this section, we analyze the evolution of the median  $sSFR$  derived from the  $sSFR$  functions obtained in Sect. 4.3. We obtain a mass-dependent increase in the  $sSFR$  as a function of redshift and a decrease in  $\log(sSFR)$  as  $-0.17 M_{\star}$ . We also combine all our  $sSFR$  functions correcting for time evolution, showing that the width of the  $sSFR$  distribution increases with the stellar mass.

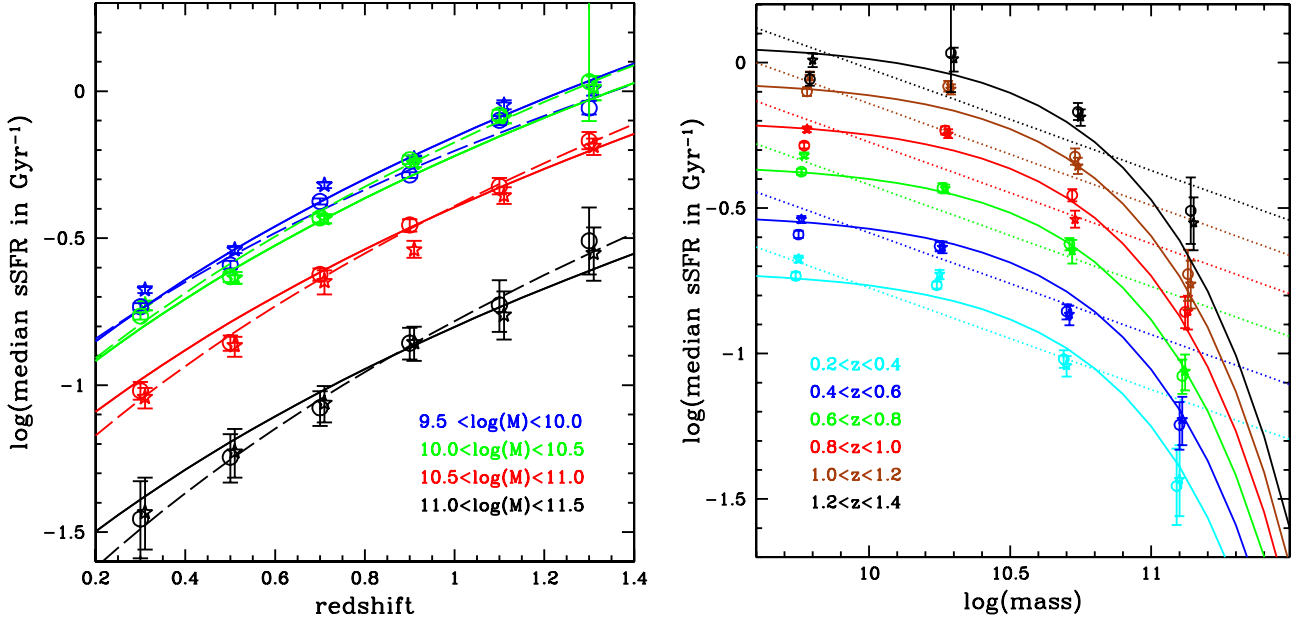
### 5.1. Evolution of the median $sSFR$

Figure 5 shows the evolution of the median  $sSFR$ . The median  $sSFR$  is obtained from the best-fit functions (see Sect. 4.3) to avoid selection biases. We observe a clear increase in the  $sSFR$  as a function of redshift (left panel) and a decrease with  $M_{\star}$  (right panel).

We adopt the following parametrization of the  $sSFR$  evolution as a function of redshift and mass,

$$\log(sSFR) = a + \beta \times \frac{M_{\star}}{10^{10.5} M_{\odot}} + b \times \log_{10}(1+z) \quad (5)$$

with  $a$  the normalization,  $\beta$  the dependency on the mass and  $b$  the dependency on redshift. The best-fit parameters are given in Table 3. Assuming that the redshift evolution of the  $sSFR$  does not depend on the mass, we find  $\beta = -0.172 \pm 0.007$  and  $b = 3.14 \pm 0.07$ . The result is shown with solid lines in Fig. 5. Then, we relax the assumption that the parameter  $b$  is independent of the stellar mass and we fit each stellar mass bin independently. We obtain  $b = 2.88 \pm 0.12$ ,  $b = 3.31 \pm 0.10$ ,  $b = 3.52 \pm 0.15$  and  $b = 3.78 \pm 0.60$  in the stellar mass bins  $\log(M_{\star}) = 9.5\text{--}10$  dex,  $10\text{--}10.5$ ,  $10.5\text{--}11$ , and  $11\text{--}11.5$ , respectively. The result is shown with dashed lines in Fig. 5 (left). It suggests that the evolution is faster for the massive galaxies,



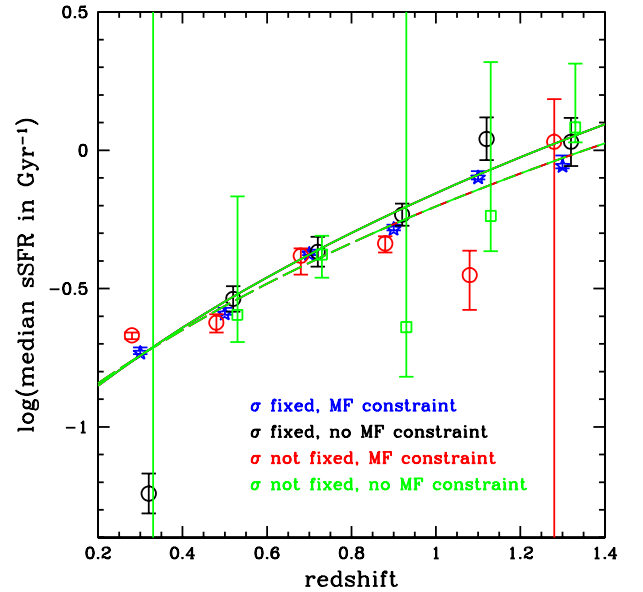
**Fig. 5.** Evolution of the median  $sSFR$  as a function of redshift (*left panel*) and stellar mass (*right panel*). Open stars and open circles correspond to the values measured assuming a log-normal and a double-exponential profiles, respectively. The solid lines correspond to the fit using Eq. (5) and  $b$  independent of  $M_*$ . *Left*: each color corresponds to a stellar mass bin (blue:  $9.5-10$  dex, green:  $10-10.5$ , red:  $10.5-11$  and black  $11-11.5$ ). The dashed lines are obtained with  $b$  varying in each mass bin. *Right*: each color corresponds to a redshift bin from  $0.2-0.4$  (cyan) to  $1.2-1.4$  (black). The dotted lines are obtained using  $\log(sSFR) \propto -0.17 M_*$  (i.e., the standard definition in the literature). The solid line corresponds to  $\log(sSFR) \propto -0.17 M_*$ .

which is in agreement with a downsizing pattern (Cowie et al. 1996). These values are obtained assuming a double-exponential profile, but the results are similar if we consider a log-normal profile.

The parameter  $b$  is directly comparable with several values from the literature using the same parametrization in  $\propto(1+z)^b$ . In Karim et al. (2011),  $b$  varies between 3.42 and 3.62 at  $10.2 < \log(M_*) < 11.1$  which is consistent with our results in the same mass range. Elbaz et al. (2011) find an evolution with  $b = 2.8$ , based on deep GOODS data. Therefore, a dependency of  $b$  on the stellar mass could explain the differences between the various values found in the literature.

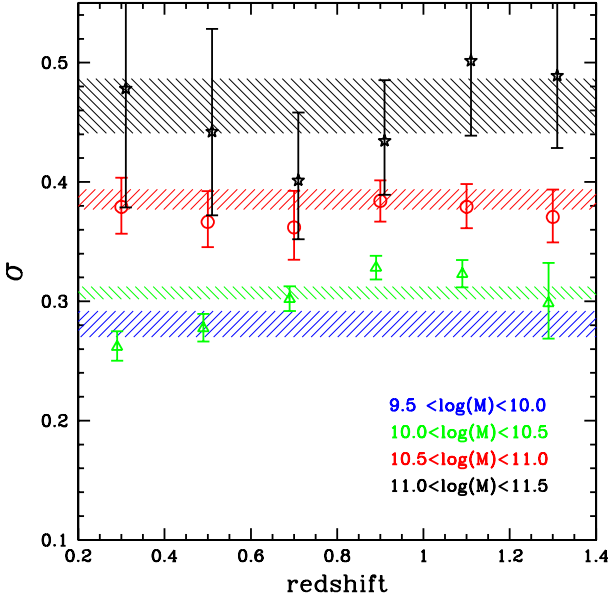
With our parametrization,  $\log(sSFR)$  is proportional to  $M_*$ . The parameter  $\beta$  that we obtain cannot be directly compared with values from the literature. In most of the studies, a linear dependency with  $\log(M_*)$  is assumed (dotted lines in Fig. 5, right panel) while we assume a linear dependency with  $M_*$  (solid lines). Our parametrization in  $M_*$  produces a more rapid decrease in the  $sSFR$  at  $M_* > 10^{10.5} M_\odot$  and less evolution at lower mass than a parametrization in  $\log(M_*)$ . As shown in Fig. 5, a parametrization in  $\log(M_*)$  is not suitable for the considered mass range. It could explain why the slope values in the literature depends on the considered mass range when  $\log(sSFR) \propto \log(M_*)$  (Lee et al. 2015; Whitaker et al. 2014). We emphasize that the choice of having  $\log(sSFR)$  proportional to  $M_*$  is physically motivated since “ $\tau$  models” converge toward such parametrization at high masses (e.g. Noeske et al. 2007b; Bauer et al. 2013).

Finally, we would like to note that including the  $GSMF_{SF}$  within the  $\chi^2$  expression (Eq. (4)) brings a decisive constraint over the median  $sSFR$ . We illustrate this point in Fig. 6, showing the evolution of the median  $sSFR$  with redshift in the mass bin  $9.5 < \log(M_*) < 10$ . In this mass bin, the non-parametric  $sSFR$  function is primarily composed of lower limits below the  $sSFR$  peak. By using only the information contained in the



**Fig. 6.** Evolution of the median  $sSFR$  as a function of redshift in the stellar mass bin  $9.5 < \log(M) < 10$ . The fit is done with the double-exponential profile and different options. Green:  $\sigma$  is free and the  $GSMF_{SF}$  constraint is not used; red:  $\sigma$  is free and the  $GSMF_{SF}$  constraint is used; black:  $\sigma$  is fixed and the  $GSMF_{SF}$  constraint is not used; blue:  $\sigma$  is fixed the  $GSMF_{SF}$  constraint is used (default configuration).

non-parametric data to perform the fit, we would not constrain the median  $sSFR$ , as shown by the green error bars. Adding the  $GSMF_{SF}$  as an additional observable within the  $\chi^2$  expression breaks the degeneracy between the best-fit parameters and allows an accurate estimate of the median  $sSFR$  (red and blue error bars).



**Fig. 7.** Evolution of the parameter  $\sigma$  as a function of redshift, obtained by fitting a log-normal function to the  $1/V_{\max}$  data. Each color corresponds to a stellar mass bin (blue:  $9.5 < \log(M_*) < 10$ , green:  $10-10.5$ , red:  $10.5-11$  and black  $11-11.5$ ). The shaded areas correspond to the value measured when all the  $sSFR$  functions are combined at  $z = 0$  as shown in Fig. 8. The individual  $\sigma$  points are not measured at  $9.5 < \log(M_*) < 10$  since we set the value of  $\sigma$  in this mass range.

### 5.2. Broadening of the $sSFR$ function

Figure 7 shows the evolution of  $\sigma$  as a function of redshift, in the case of a log-normal fit. We find that  $\sigma$  increases with mass. We also find that  $\sigma$  is consistent with being constant with redshift at  $z < 1.4$ .

Since  $\log(sSFR)$  is not linearly proportional to  $\log(M_*)$ , it could create an artificial broadening of the  $sSFR$  function, especially if a large redshift range is considered. In order to test this effect, we compute the  $sSFR$  functions in smaller mass bins of  $\Delta(\log M_*) = 0.2$  rather than  $\Delta(\log M_*) = 0.5$ . We still find that  $\sigma$  is close to 0.3 at  $10.0 < \log(M_*) < 10.2$  and 0.45 at  $11.0 < \log(M) < 11.2$ .

We use the  $\sigma$  value from the log-normal function since this value can be directly compared with other values from the literature. Our value of  $\sigma$  is higher than previous studies which converge to an rms of 0.2 dex (e.g. Peng et al. 2010; Sargent et al. 2012; Salimi et al. 2013; Speagle et al. 2014). Noeske et al. (2007a) find an rms of 0.35 dex, before deconvolution, which is close to our value for the intermediate mass range. Almost no study finds a scatter of  $>0.4$  dex as we get for  $M_* > 10^{11} M_\odot$  galaxies, except Salimi et al. (2007).

An attractive interpretation is that the different mass ranges covered by each survey could explain the various rms measured in the literature. However, Salimi et al. (2007) and Whitaker et al. (2012) find that the scatter of the main sequence decreases with  $M_*$ , which is at odds with our result. Moreover, Lee et al. (2015) find an rms of 0.35 dex almost constant with the  $M_*$  using similar data.

If we measure the rms of our own  $M_* - sSFR$  scatter diagram (Fig. 3), we obtain an rms below 0.25 dex at  $\log(M_*) = 11-11.5$ , much lower than the  $\sigma$  measured using the  $sSFR$  function. One interpretation is that the dynamical  $sSFR$  range covered by the data is not sufficiently large to correctly estimate the r.m.s. from a scatter diagram. We demonstrate this effect with a simulated

catalogue in Sect. 7. The advantage of using the  $sSFR$  distribution is to extrapolate the shape of the function over the full  $sSFR$  range, even if the data span a restricted  $sSFR$  range.

### 5.3. Shape of the combined $sSFR$ functions

We correct for the redshift evolution of the  $sSFR$  and we combine all the measurements at  $z = 0$ . Figure 8 shows the combined  $1/V_{\max}$  data per stellar mass bin. The shape of the  $sSFR$  distribution appears invariant with time: the dispersion between the data points is around 0.1 dex as shown in the insets of Fig. 8. We observe that the double-exponential and the log-normal profiles provide a good fit of the combined data (solid red line and blue dashed line, respectively). Even so, the  $\chi^2$  values are smaller for double-exponential fit at  $10 < \log(M_*) < 11$ .

As shown in Fig. 7, the broadening of the  $sSFR$  function is also visible in the combined  $sSFR$  functions. If we let the fraction of starbursts<sup>4</sup> vary while we fit the combined data, we obtain that the fraction of starbursts is consistent with 0 at  $\log(M_*) > 10.5$ , but the uncertainties are consistent with a contribution of 1%. At lower mass, we find a fraction of starbursts of  $2 \pm 1\%$  and  $4 \pm 1\%$  assuming a double-exponential profile at  $\log(M_*/M_\odot) = 10-10.5$  and  $9-9.5$ . The associated uncertainties are underestimated since all the parameters describing the shape of the starburst contribution are set, except the normalization. There is a hint that the fraction of starburst increases at low masses. However, we would need a survey covering a larger volume to cover the high  $sSFR$  range of the distribution, since massive starbursting galaxies are rare galaxies.

## 6. The $sSFR$ function using other SFR tracers

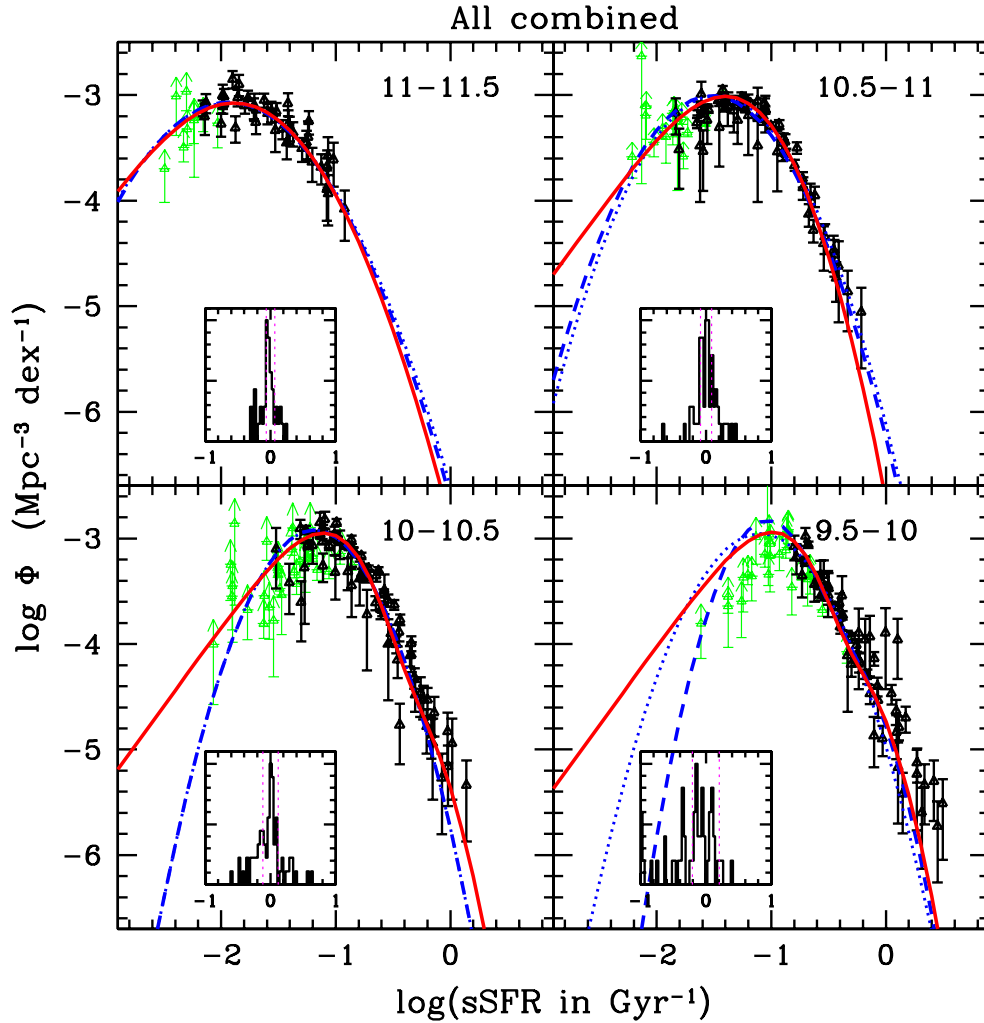
When using the  $SFR_{UV+IR}$  tracer, the density of star-forming galaxies below the  $sSFR$  peak relies on the extrapolation of the best-fit profile (double-exponential or log-normal). The UV and optical SFR tracers allow us to cover the full  $sSFR$  range and could bring some information at low  $sSFR$ . In this section, we derive the  $sSFR$  function using SFR tracers based on the stellar emissivity only (without using the IR data), as shown in Fig. 9.

We estimate the SFR from the SED fitting procedure (the same method as for the stellar mass, see Sect. 2). When comparing  $SFR_{SED}$  and  $SFR_{UV+IR}$ , we find some bias reaching 0.25 dex and a scatter between 0.25 and 0.35 dex (the scatter increases both with the mass and the redshift). The comparison between our reference  $sSFR_{UV+IR}$  functions (black solid lines) and the  $sSFR_{SED}$  functions (red solid lines) shows that the  $sSFR_{SED}$  functions are much flatter<sup>5</sup>. We convolve the reference  $sSFR_{UV+IR}$  functions by a Gaussian function with  $\sigma = 0.3$  dex (black dotted lines) to mimic the expected uncertainties. After this convolution, the agreement between the convolved  $sSFR_{UV+IR}$  function (dotted lines) and the  $sSFR_{SED}$  function is better. The  $sSFR_{SED}$  function would favor a fit with a double-exponential profile. At high mass  $M_* > 10^{10.5} M_\odot$ , the density of low  $sSFR_{SED}$  galaxies even exceeds what we expect from the double-exponential extrapolation.

<sup>4</sup> The fraction of starburst is defined as the ratio between the integral of the log-normal distribution associated with the starburst component and the integral of the main-sequence contribution (log-normal or double-exponential). This contribution was set at 3% when we fit individual redshift and mass bins.

<sup>5</sup> Lower density at the density peak, and larger density at high/low  $sSFR$  than the reference  $sSFR_{UV+IR}$  function.





**Fig. 8.**  $sSFR$  functions combined at  $z = 0$  correcting the  $1/V_{\max}$  data from the redshift evolution derived in Sect. 4.3. Each panel corresponds to a stellar mass bin. The black triangles are obtained with the  $1/V_{\max}$  estimator over the COSMOS and the GOODS fields (mixed together in this figure). The green arrows are lower limits in the  $1/V_{\max}$  estimate. The red solid lines and blue dashed lines correspond to the best-fit of a double-exponential and a log-normal function over the  $1/V_{\max}$  data. The blue dotted line corresponds to the fit of a Gaussian function without including a starburst component. The inset in each panel shows the distribution of the differences between the best-fit function and the data, with a density dispersion of 0.19 dex at  $\log(M_{\star}) = 9.5-10$ , 0.11 dex at  $\log(M_{\star}) = 10-10.5$ , 0.09 dex at  $\log(M_{\star}) = 10.5-11$ , and 0.07 dex at  $\log(M_{\star}) = 11-11.5$ , as shown by the vertical dashed lines.

Arnouts et al. (2013) have developed a new method for estimating the SFR from optical data. This SFR – denoted  $SFR_{\text{NRK}}$  – is estimated by correcting the UV intrinsic luminosity  $\mathcal{L}_{\text{UV}}$  by the infrared excess  $IRX = \mathcal{L}_{\text{IR}}/\mathcal{L}_{\text{UV}}$ , directly estimated from the position of the galaxy into the  $NUV-R-K$  plane. We use the parametrization of the  $IRX$  from Arnouts et al. (2013), slightly modified by Le Floc’h et al. (in prep.)<sup>6</sup>. The dispersion between  $SFR_{\text{NRK}}$  and  $SFR_{\text{IR+UV}}$  is around 0.15 dex (could reach 0.2 dex). Figure 9 shows the excellent agreement between the  $sSFR_{\text{NRK}}$  functions (blue open stars) and the  $sSFR_{\text{IR+UV}}$  functions (black solid lines) at  $M_{\star} < 10^{11} M_{\odot}$ . The positions of the peak of the  $sSFR$  functions are similar (within 0.2 dex). Using the  $sSFR_{\text{NRK}}$  tracer, we find a better agreement with the log-normal profile since the  $sSFR_{\text{NRK}}$  density falls sharply in the lowest  $sSFR$  bin. Still, the double-exponential profile is more appropriate in some bins (for instance, in the redshift bin  $0.2 < z < 0.4$ ). Given

a possible bias in  $sSFR_{\text{NRK}}$  at low  $sSFR$  (Arnouts et al. 2013) leading to an underestimation of the  $sSFR_{\text{NRK}}$ , we cannot conclude that this sharp cut at low  $sSFR_{\text{NRK}}$  is real.

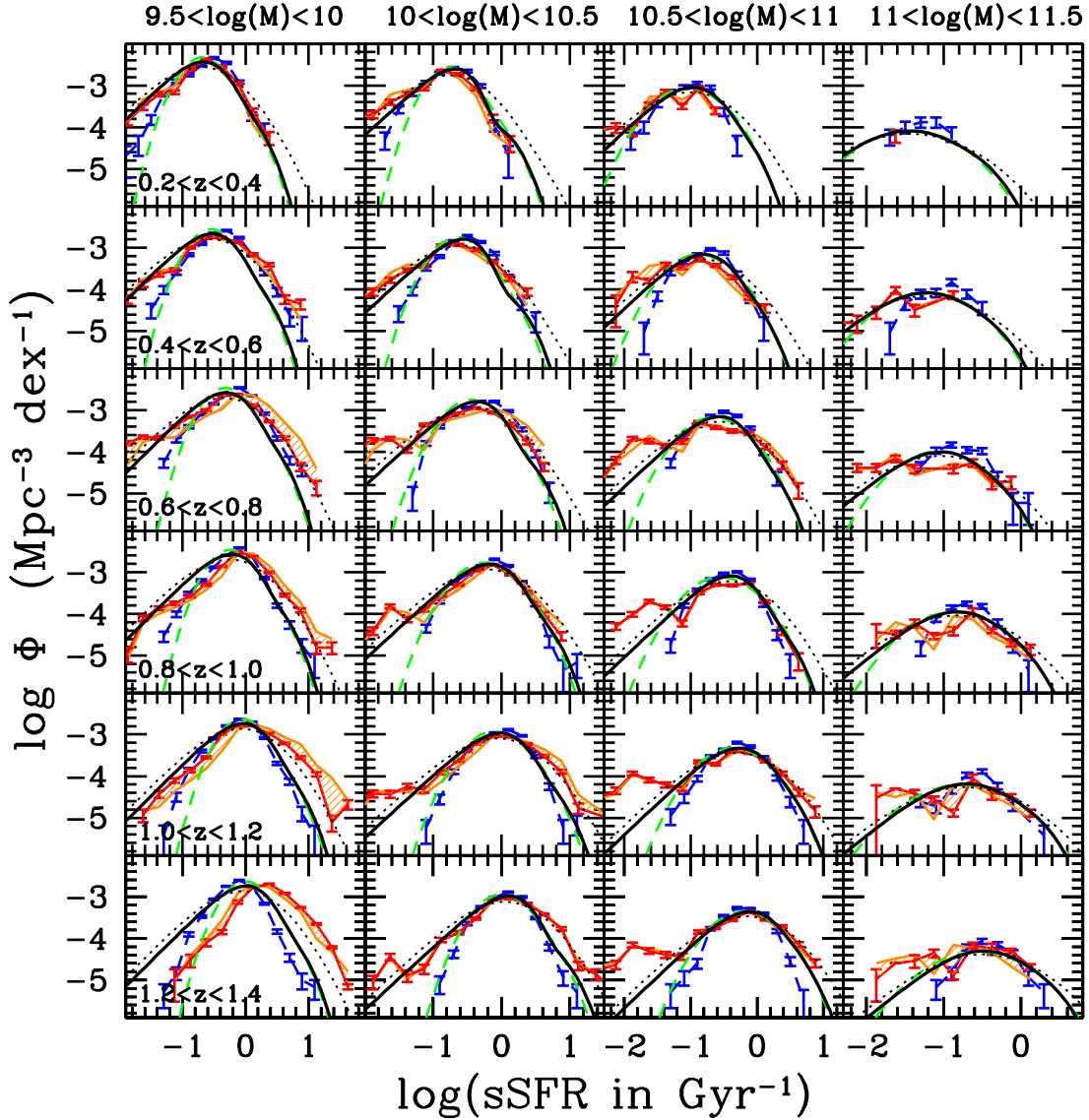
To summarize, given the large uncertainties affecting the UV and optical SFR tracers, it is still challenging to constrain the low  $sSFR$  end.

Finally, we note that our reference SFR tracer combining UV and IR could be overestimated, since dust could be heated by the old stellar populations (Utomo et al. 2014). This bias would mainly affect galaxies with  $sSFR[\text{Gyr}^{-1}] < -1$ . Correcting for such a bias would modify the shape of our  $sSFR$  function: the slope of the low  $sSFR$  side of the  $sSFR$  function obtained with the double-exponential profile would be even flatter than the observed one.

## 7. Comparison with a semi-analytical model

We now compare our results with the predictions of a semi-analytical model. The mock catalogue is based on  $\Lambda$ CDM simulations from Wang et al. (2008) and the galaxy properties

<sup>6</sup> In the mass bin  $9.5 < \log(M_{\star}) < 10$ , Le Floc’h et al. (in prep.) show that the  $IRX$  could be overestimated. Based on a stacking procedure using Herschel images, Le Floc’h et al. (in prep.) derive an additive term of  $-0.35(z - 0.25)$  to be added to the  $IRX$  at  $9.5 < \log(M_{\star}) < 10$ .



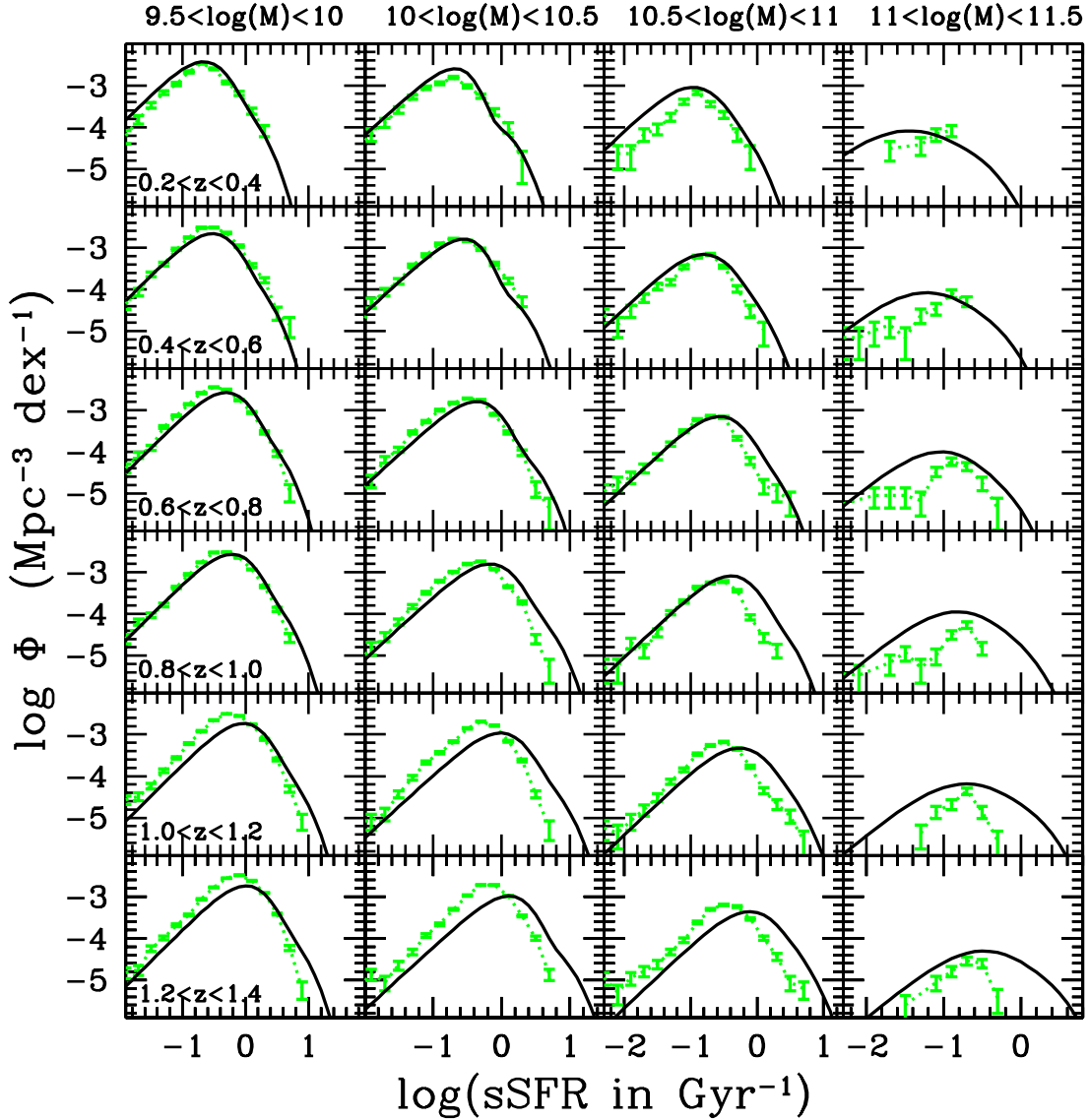
**Fig. 9.**  $sSFR$  functions per redshift bin from  $0.2 < z < 0.4$  to  $1.2 < z < 1.4$  (from the top to the bottom rows) and per stellar mass bin from  $9.5 < \log(M_\star) < 10$  to  $11 < \log(M_\star) < 11.5$  (from the left to the right columns). The black solid lines and green dashed lines correspond to the best-fit  $sSFR_{UV+IR}$  functions assuming a double-exponential and a log-normal profile, respectively (as shown in Fig. 4). The dotted lines correspond to the same function convolved with a Gaussian having  $\sigma = 0.3$  dex to mimic the expected uncertainties on  $SFR_{SED}$ . The  $sSFR_{NRK}$  functions are shown with blue error bars and dashed lines. They are derived using an optical tracer of the SFR developed by Arnouts et al. (2013). The red and orange lines are obtained using  $SFR_{SED}$  with and without a correction for possible biases in  $SFR_{SED}$ .

were generated using the galaxy formation model, as detailed in De Lucia & Blaizot (2007) and Wang & White (2008). The light cone survey covers an area of  $1.4 \times 1.4 \text{ deg}^2$  similar to COSMOS. The redshift, the SFR and the stellar mass are available for all galaxies in the simulation, as well as the observed magnitudes expected for these galaxies. We select the star-forming galaxies using a criterion similar to our selection in the  $NUV-R-K$  plane.

We first test if we can reproduce the same selection effects as discussed in Sect. 4.1. We apply a  $K$ -band selection in the simulation similar to the ones applied in the data ( $K < 24$  and  $K < 24.3$  for the COSMOS and GOODS surveys, respectively). The selection at  $24 \mu\text{m}$  creates an observational limit in the redshift-SFR plane. We apply the same SFR limits in the simulation as the ones established for the COSMOS and the GOODS surveys. Finally, we select galaxies over an area of  $1.5 \text{ deg}^2$  for COSMOS and  $138 \text{ arcmin}^2$  for GOODS. The blue and red points in Fig. 11 show the distribution of the simulated sources in the

$M_\star - sSFR$  plane for the GOODS-like and COSMOS-like surveys, respectively. We reproduce exactly the same selection effect as the ones discussed in Sect. 4.1. The predicted COSMOS-like and GOODS-like surveys do not cover the same area in the  $M_\star - sSFR$  plane. Even with the GOODS-like survey, the MIPS data are not sufficiently deep to provide a representative sample of low-mass galaxies in terms of  $sSFR$ .

We also test that the width of the main sequence is not correctly measured using simply the rms of the sample without taking into account selection effects. For instance, the rms of the  $sSFR$  without any selection (orange points) is 0.38 dex at  $0.8 < z < 1$  and  $9.5 < \log(M_\star) < 10$ , but we only measure an rms of 0.18 dex and 0.23 dex in the COSMOS-like and GOODS-like survey, respectively. It illustrates the necessity of taking into account selection effects in SFR limited surveys, as discussed in Rodighiero et al. (2014) and Kelson (2014). In particular, any study looking at the evolution of the  $sSFR$  with the mass would be biased.



**Fig. 10.**  $s$ SFR functions per redshift bin from  $0.2 < z < 0.4$  to  $1.2 < z < 1.4$  (from the top to the bottom rows) and per stellar mass bin from  $9.5 < \log(M_*) < 10$  to  $11 < \log(M_*) < 11.5$  (from the left to the right columns). The black solid lines correspond to the best-fit of the  $s$ SFR<sub>UV+IR</sub> function with a double-exponential profile. The green dotted line corresponds to the predictions of the semi-analytical model.

Finally, we directly compute the predicted  $s$ SFR functions from the simulated catalogue. A comparison with the  $s$ SFR functions predicted by the models (green lines) and the observed ones is shown in Fig. 10. A qualitative comparison shows that the predicted shape of the  $s$ SFR functions is similar to the observed one. A parametrization with a double-exponential profile is perfectly suitable for the simulation. In specific redshift and mass bins, the agreement with the data is remarkable (e.g.  $0.4 < z < 0.6$  and  $\log(M_*) < 10.5$ ). The slope of the predicted  $s$ SFR function is in excellent agreement with the double-exponential profile. The predicted density of low  $s$ SFR star-forming galaxies exceeds the density extrapolated from the log-normal profile. Therefore, an extrapolation with the double-exponential profile is more natural than a log-normal profile on the theoretical point of view.

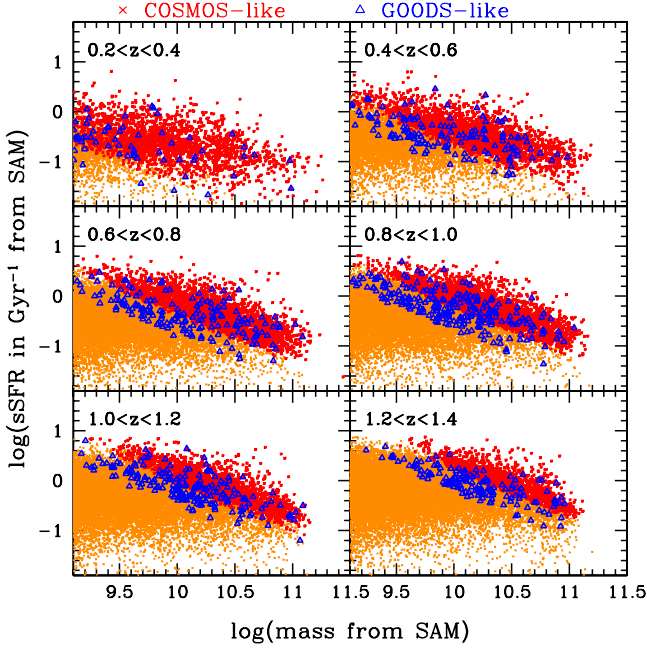
The agreement between the predicted and observed  $s$ SFR functions breaks down for galaxies more massive than  $\log(M_*) > 10.5$ , but also at  $z > 1$ . As a global trend, the galaxies with the largest  $s$ SFR are missed in the simulation (e.g.  $0.8 < z < 1$  and  $\log(M_*) > 10.5$ ). At  $z > 1$ , the predicted distribution is shifted at lower  $s$ SFR in comparison to the data. We

will discuss in Sect. 8.1 the predicted evolution of the median  $s$ SFR compared to the observed one.

Finally, we note that we do not use the most recent SAMs. We keep the same SAM as in our previous works in COSMOS. For instance, we use the same SAM to compare predicted and observed  $GSMF_{SF}$  as in Ilbert et al. (2013). However, more detailed comparisons with recent numerical simulations will be necessary in the future.

## 8. Discussion

In this section, we discuss our main results: 1) the mass-dependent increase in the  $s$ SFR with redshift; 2) the decrease in  $\log(sSFR)$  as  $-0.17 M_*$ ; and 3) the broadening of the  $s$ SFR function with mass. We discuss here the numerous complex processes that can reduce the  $s$ SFR as the stellar mass increases, from the hot halo quenching mode to secular evolution of galaxy disks. The diversity of these processes could explain the broadening of the  $s$ SFR functions with mass, and their complexity



**Fig. 11.**  $s$ SFR as a function of the stellar mass using the prediction of the semi-analytical model. The orange points are the mass and the  $s$ SFR of the full simulated catalogue. The blue triangles and the red crosses correspond to a GOODS-like and a COSMOS-like survey, respectively.

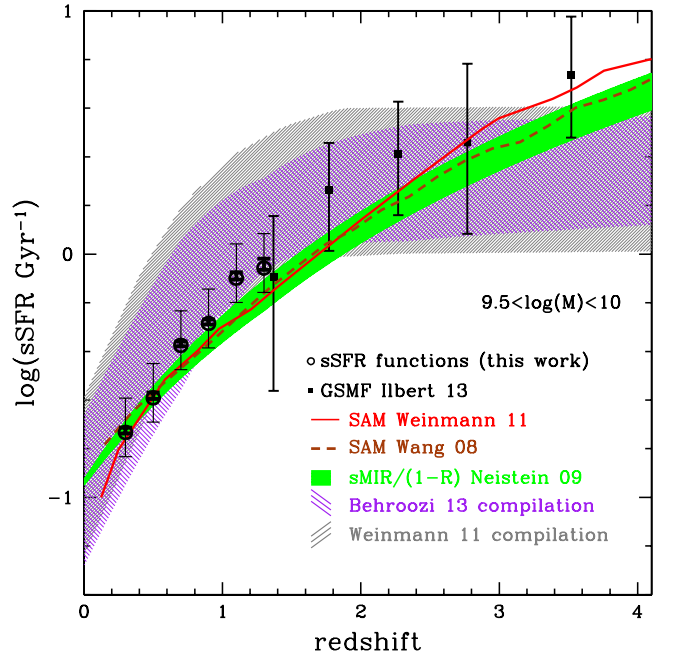
could reduce the ability of the SAM to reproduce the  $s$ SFR evolution for the most massive galaxies.

#### 8.1. Increase in $s$ SFR with redshift: link with the cosmological accretion rate

We compare here the evolution of the median  $s$ SFR with the specific mass increase rate  $s\text{MIR}_{\text{DM}}$  ( $\dot{M}_H/M_H$  following Lilly et al. 2013) and with the predictions of semi-analytical models.

Assuming the gas inflow rate is driven by the cosmological accretion rate of the dark matter structures, we expect that the  $s$ SFR follows the evolution of the  $s\text{MIR}_{\text{DM}}$  (in the following, we implicitly divide the  $s\text{MIR}_{\text{DM}}$  by  $1 - R$  with  $R$  the return fraction, as discussed in Appendix A). In simple models in which galaxies reach a quasi-steady state (Bouché et al. 2010; Lilly et al. 2013), the evolution of the  $s$ SFR is coupled with the evolution of the  $s\text{MIR}_{\text{DM}}$ . Based on  $N$ -body simulations and extended Press-Schechter formalism, Neistein & Dekel (2008) show that  $s\text{MIR}_{\text{DM}}$  evolves as  $\propto 0.047(M_H/10^{12} M_\odot)^{0.15} \times (1 + z + 0.1(1 + z)^{-1.25})^{2.5}$ , which could explain why the  $s$ SFR increases with redshift. The green shaded areas in Figs. 12 and 13 show the evolution of the  $s\text{MIR}_{\text{DM}}$ , after having determined the value of  $M_H$  using the stellar-to-halo mass ratio from Coupon et al. (2015).

We first discuss the sample of low-mass galaxies at  $9.5 < \log(M_\star) < 10$ . In Fig. 12, we show the evolution of  $s\text{MIR}_{\text{DM}}$  and we add the  $s$ SFR evolution predicted by the SAM from Weinmann et al. (2011; red solid line) and Wang et al. (2008; brown dashed line). In this mass range, the evolution of the  $s$ SFR predicted by the SAM follows closely the evolution of  $s\text{MIR}_{\text{DM}}$  (Weinmann et al. 2011). This statement is also true even with the latest results from the hydrodynamical Illustris simulation (Sparre et al. 2015). We also show in Fig. 12 the data compilations from Weinmann et al. (2011) and from Behroozi et al. (2013) from various measurements available in the literature (gray and magenta shaded areas). As discussed by

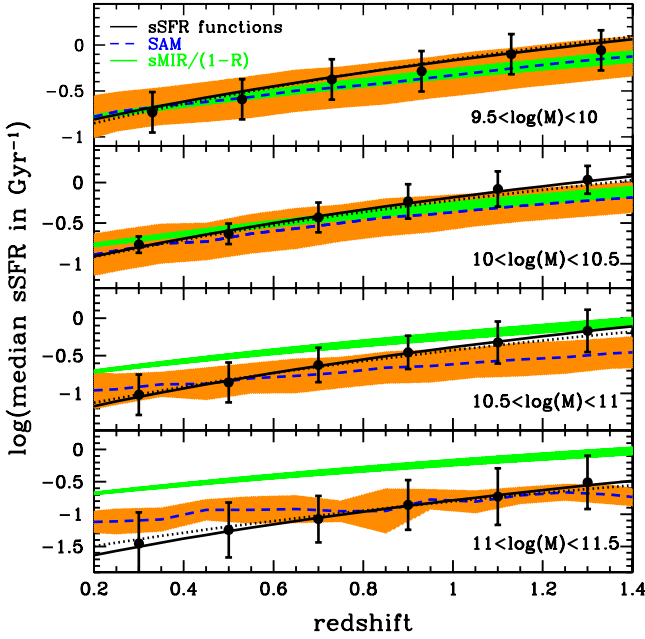


**Fig. 12.** Evolution of the median  $s$ SFR derived from the  $s$ SFR functions at  $9.5 < \log(M_\star/M_\odot) < 10$  (open black circles). The statistical uncertainties on the median  $s$ SFR are within the symbols. Systematic uncertainties ( $\pm 0.1$  dex in stellar mass and  $+0.1$  dex in SFR) are indicated with thin error bars. The  $s$ SFR derived indirectly from the UltraVISTA mass functions are indicated with filled black squares. The gray and purple shaded areas correspond to the data compilations from Weinmann et al. (2011) and Behroozi et al. (2013), respectively. The prediction of the SAM from Weinmann et al. (2011) and Wang et al. (2008) are shown with the red and brown lines. The green shaded area corresponds to the analytical relation from Neistein & Dekel (2008) to describe the  $s\text{MIR}$  evolution, corrected for the mass loss as discussed in Appendix A.

Weinmann et al. (2011), the observed  $s$ SFR from the literature are well above the predictions of the SAM at  $z < 1.5$ . We add in Fig. 12 our own measurements of the median  $s$ SFR. Our values are located in the lowest part of the Weinmann et al. (2011) and from Behroozi et al. (2013) compilations. Therefore, we find a much better agreement between the observed and theoretical evolution of the  $s$ SFR, as expected if the gas feeding is directly driven by the cosmological accretion rate. There are several reasons for the difference with previous results: 1) we take into account selection effects that lead to a lower median  $s$ SFR value than the ones obtained directly from a SFR limited survey; 2) the previous compilations do not differentiate between median and average  $s$ SFR which could modify the  $s$ SFR values by 0.2 dex; or 3) a systematic uncertainty of  $-0.1$  dex could affect our SFR measurements as discussed in Sect. 2. Error bars in Fig. 12 include these systematic uncertainties, as well as a possible  $\pm 0.1$  dex systematic uncertainty on the stellar mass.

While the  $s$ SFR evolution matches the SAM predictions and follows the  $s\text{MIR}_{\text{DM}}$  evolution for our low-mass sample, this agreement breaks down at higher masses. Figure 13 shows the evolution of the median  $s$ SFR predicted by the Wang et al. (2008) model as well as the evolution of the  $s\text{MIR}_{\text{DM}}$  in several stellar mass bins. We first note that the evolution of  $s\text{MIR}_{\text{DM}}$  no longer corresponds to the evolution of the  $s$ SFR in the SAM. Indeed, AGN feedback is included in the SAM in order to quench the star formation in massive halos (e.g. Croton et al. 2006; Cattaneo et al. 2006; Wang et al. 2008). While these





**Fig. 13.** Evolution of the median  $sSFR$  as a function of redshift. Each panel corresponds to a stellar mass bin. The blue dashed lines correspond to the median  $sSFR$  expected from the semi-analytical model. The orange area is derived by measuring the rms of the  $sSFR$  in the semi-analytical model. The solid circles correspond to the median  $sSFR$  measured in this work. The vertical error bars indicate the  $\sigma$  derived from the fit with a log-normal function (i.e., the intrinsic scatter of the  $M_\star - sSFR$  relation). The solid (dotted) lines correspond to the fit over the data using Eq. (5) assuming that  $b$  does (does not) depend on the mass. The green shaded area corresponds to the analytical relation from Neistein & Dekel (2008) to describe the  $sMIR$  evolution, corrected for the mass loss as discussed in Appendix A.

recipes are sufficient to recover a broad agreement with the observed  $sSFR$ , we obtain that the median  $sSFR$  evolves faster in our data than in the SAM of Wang et al. (2008). In the data,  $b$  varies from 2.9 to 3.8 from low-mass to high-mass galaxies. We find the reverse trend in the simulation. The simulation predicts that  $b$  decreases with mass:  $b = 2.3, 2.1, 1.9, 1.5$  at  $\log(M_\star) = 9.5-10$  dex,  $10-10.5$ ,  $10.5-11$  and  $11-11.5$ , respectively. We also observe that the width of the  $sSFR$  function is smaller in the model than in the data for the massive galaxies. The simulated scatter of the  $sSFR$  distribution is 0.22 dex at  $M_\star < 10^{11} M_\odot$  but reaches 0.16 dex for the most massive galaxies. Therefore, the trend is the reverse of the observed one.

In Ilbert et al. (2013), the low-mass end of star-forming  $GSMF_{SF}$  is accurately reproduced by the SAM model of Wang et al. (2008) while the model under-predicts the density of massive star-forming galaxies (their Fig. 14). Here, we also show that the evolution of the  $sSFR$  with redshift is in agreement with the evolution predicted by the SAMs for low-mass galaxies, but complex physical processes that could affect the SFH in massive galaxies, such as quenching or secular evolution, need to be modeled more accurately. In particular, galaxies with the highest  $sSFR$  are missing in the simulation at  $z \sim 1$  as shown in Sect. 7.

## 8.2. Gradual decline of the $sSFR$ with the mass: quenching processes and/or lower efficiency of the star formation

One of our main results is that the full  $sSFR$  distribution is shifted toward lower  $sSFR$  as the mass increases, with

$\log(sSFR) \propto -0.17 M_\star$ . We discuss here possible mechanisms that could create such a dependency on the stellar mass.

### 8.2.1. Quenching processes

A first hypothesis is that all massive galaxies are on their way to being quenched and we observe galaxies transitioning toward an even lower  $sSFR$ .

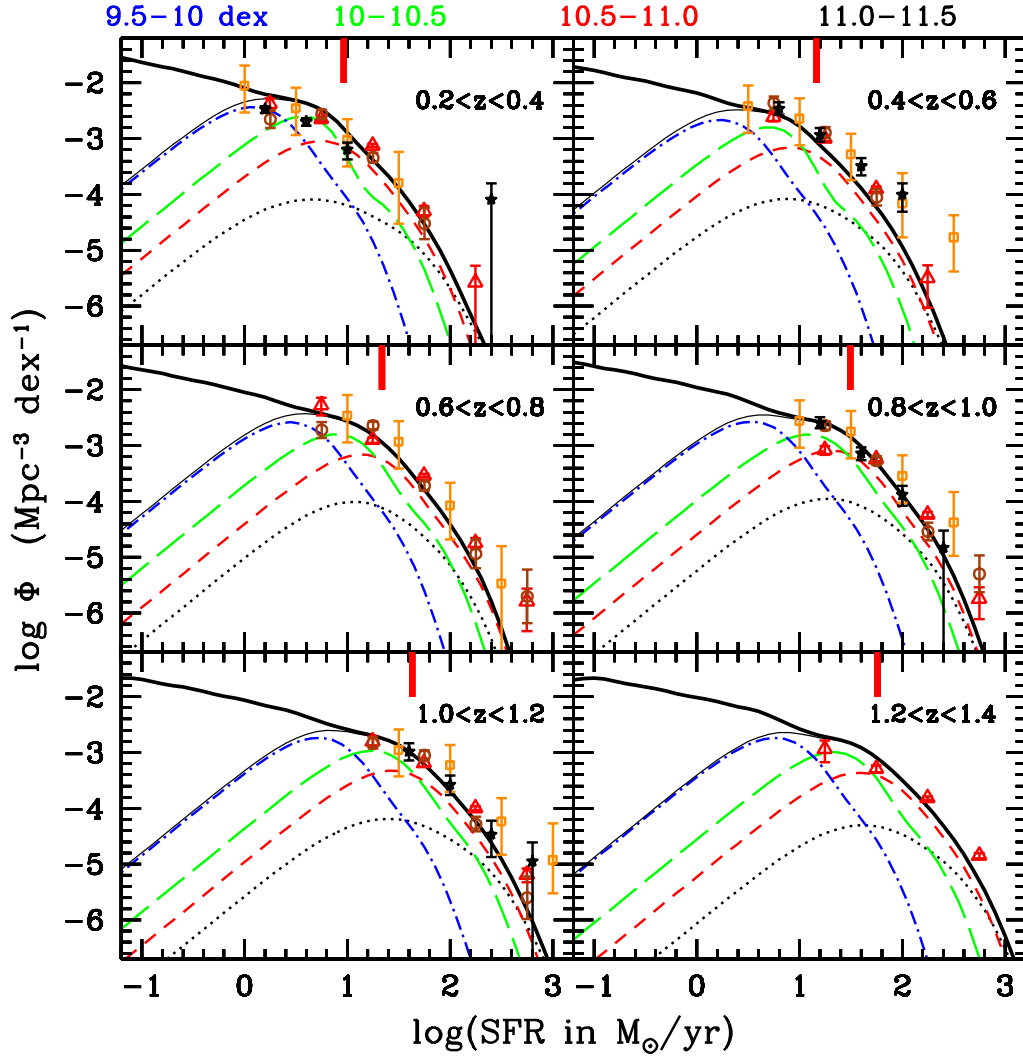
In some scenarios, such as Hopkins et al. (2008), a major merger could trigger a burst of star formation and then quench a galaxy in less than 0.3 Gyr. This quenching process cannot be ongoing for all massive star-forming galaxies simultaneously: we would observe the density of massive star-forming galaxies dropping rapidly with time, while the high-mass end of the  $GSMF_{SF}$  does not evolve significantly at  $z < 1$  (e.g. Arnouts et al. 2007; Ilbert et al. 2010; Boissier et al. 2010). With such a short quenching timescale, star-forming galaxies would be removed almost instantaneously from our considered sample.

Galaxy could also be quenched by an exhaustion of the cold gas supply as the DM halos grow. For instance, cold accretion across filaments is suppressed in massive halos at  $z < 2$  (Dekel et al. 2009) which reduces the supply of cold gas and then in the star formation. Hydrodynamical simulations predict the formation of a virial shock in dark matter halos with  $M_H > 10^{12} M_\odot$ . These massive halos can be maintained “hot” with the radio AGN feedback mode or extreme star formation feedback (e.g., Croton et al. 2006; Cattaneo et al. 2006; Wang et al. 2008). According to Gabor & Davé (priv. comm.), mass quenching and environment quenching would be the consequence of the same process: the starving of the galaxies falling in a halo more massive than  $10^{12} M_\odot$ . The simple model of Noeske et al. (2007b) reflects the SFH in such gas exhaustion case. In Noeske et al. (2007b), the decreases in the  $sSFR$  with mass is reproduced by assuming exponentially declining SFH with  $\tau$  having an inverse dependency with mass –  $\tau \propto 1/M$ . The “stage” model of Noeske et al. (2007b) reproduces well the turn-over at high mass that we observe. For a galaxy as massive as  $\log(M_\star) = 11.3$  at  $z = 0.5$ , this model associates an exponentially declining SFH with a  $\tau$  value as large as 4 Gyr. Therefore, the bending of the  $sSFR$  with mass could be explained by gas exhaustion over long timescales  $> 3-4$  Gyr ( $\tau$  value decreases with stellar mass). Such timescales are longer than the one usually adopted in simulations to quench star formation in hot halos (typically  $1.2 \pm 0.5$  Gyr for Gabor & Davé, priv. comm.). Therefore, if the quenching in the hot halo mode explains the bending of the  $sSFR$  at high mass, it should occur on a longer timescale than usually assumed in simulation. However, if the quenching in the hot halo mode occurs with a timescale  $< 1$  Gyr, this process does not explain the bending of the  $sSFR$  with mass (although this process could be perfectly relevant to explain the formation of the quenched galaxies over time).

While these quenching processes are probably crucial to generating the quiescent population, they do not likely explain the evolution of the  $sSFR$  with mass in the star-forming population since they act on too short a timescale.

### 8.2.2. Declining efficiency of the star formation toward massive systems – impact of the bulge

A second possibility is that the efficiency in forming new stellar populations declines slowly as the stellar mass increases, without necessarily quenching. Kassin et al. (2012) show that the massive galaxies are on average more kinetically settled at  $0.2 < z < 1.2$ . They find a possible threshold around  $10^{10.4} M_\odot$



**Fig. 14.** SFR function per redshift bin (from  $0.2 < z < 0.4$  in the top left panel to  $1.2 < z < 1.4$  in the bottom right panel) and per stellar mass bin (dashed-dot blue: 9.5–10 dex, long-dashed green: 10–10.5, short-dashed red: 10.5–11 and dotted black 11–11.5). We show only the best-fit functions using a double-exponential profile and their sum corresponds to the light black solid line. The full SFR function obtained by extrapolating the contribution of galaxies at  $M_{\star} < 10^{9.5} M_{\odot}$  is shown with the thick solid black line. The points correspond to IR luminosity functions from the literature converted into SFR functions (red open triangles: Gruppioni et al. 2013; orange open squares: Le Floc’h et al. 2005; brown open circles: Rodighiero et al. 2010; black filled stars: Magnelli et al. 2009). The thick red vertical lines indicate the location of  $SFR_{\text{knee}}$  ( $\log_{10}(SFR_{\text{knee}}) = 0.96, 1.16, 1.34, 1.49, 1.63, 1.76$  at  $z = 0.2\text{--}0.4, 0.4\text{--}0.6, 0.6\text{--}0.8, 0.8\text{--}1, 1\text{--}1.2, 1.2\text{--}1.4$ ).

to move from a disordered to settled disk. If we speculate that random motion in the gas is going in the direction of a higher star formation efficiency, it could explain a decrease in the  $sSFR$  above  $10^{10.4} M_{\odot}$ . Sheth et al. (2008) show that most massive spiral galaxies have a higher fraction of bars, associated with a bulge and having redder colors. They suggest that massive systems are more mature.

Abramson et al. (2014) show in the SDSS that the decrease in the  $sSFR$  with stellar mass is explained by the increase in the bulge-mass fraction with stellar mass. The bulge is less efficient in forming stars, which explains a decrease in  $sSFR$  with mass. At  $0.5 < z < 2.5$ , Lang et al. (2014) show that the mass fraction within the bulge increases from 30% in  $10^{10} M_{\odot}$  star-forming galaxies to 50% in  $10^{11} M_{\odot}$  star-forming galaxies. Surprisingly, these ratios remain consistent between  $z \sim 1$  and  $z \sim 2$ . Therefore, the mass contribution of the bulge to the total mass increases with  $M_{\star}$  at all redshifts.

The presence of the bulge could lower the star formation efficiency. In the local Universe, Saintonge et al. (2012) show that the depletion timescale of molecular gas is longer when the

galaxy is bulge-dominated, pointing to a lower star formation efficiency when a bulge is present. Using hydrodynamical simulation, Martig et al. (2009) show that a bulge stabilizes the disk against fragmentation and this process suppresses the formation of massive star-forming clumps in the inner part of the galaxy. Genzel et al. (2014) show that the Toomre parameter  $Q$  increases at the galaxy center for a sample of  $z \sim 2$  massive disk galaxies, shutting off the gravitational instability and reducing the star formation efficiency in the inner part of the disk. Finally, Förster-Schreiber et al. (2014) show that the presence of AGN-driven massive outflows in the nuclear region that are visible only for their most massive disk galaxies at  $z \sim 2$  ( $M_{\star} > 10^{11} M_{\odot}$ ). Such outflows could clear the inner region from the gas and suppress the star formation in the bulge.

We note that the decline (or even the shut down) of the star formation in the inner region of the galaxy does not imply a quenching of the star formation in the entire galaxy. We take as an example the case of the Milky Way (MW). Snaith et al. (2014) and van Dokkum et al. (2013) analyze the SFH of the MW. For a lookback time of 6 Gyr, which corresponds to  $z \sim 0.7$ , these

studies expect a SFR below  $3 M_{\odot}/\text{yr}$  and  $\log(M_{\star}) = 10.6$ . From Fig. 4, the MW falls in the declining part of the  $s\text{SFR}$  function with a  $\log(s\text{SFR}[\text{Gyr}^{-1}]) = -1.1$  dex. Six Gyr later, the MW is not yet a quiescent galaxy and still forming  $1 M_{\odot}/\text{yr}$  (e.g. van Dokkum et al. 2013). There is no reason why the MW should quench on a timescale of a few Gyr. Therefore, these massive galaxies with a low  $s\text{SFR}$  are not necessarily quenching but could simply be quietly forming stars along cosmic time, as in the MW. A significant density of low  $s\text{SFR}$  star-forming galaxies is expected in the SAM (see Sect. 7), in agreement with a double-exponential profile for the  $s\text{SFR}$  function. Unfortunately, the small dynamical  $s\text{SFR}$  range covered by our  $\text{SFR}_{\text{UV+IR}}$  tracer in COSMOS and GOODS (see Sect. 5.3), as well as the large uncertainties within the  $\text{SFR}_{\text{SED}}$  and  $\text{SFR}_{\text{NRK}}$  tracers (see Sect. 6) do not allow us to definitively come to a conclusion about the density of the low  $s\text{SFR}$  galaxies not yet quenched.

Finally, we note that the bulge formation could be done through two channels, through secular evolution and by major and minor mergers. In the former case, a bulge could form along time under the action of a bar (e.g. Perez et al. 2013), or through gravitational disk instabilities with large star forming clumps moving inward (e.g. Immeli et al. 2004; Bournaud et al. 2007; Genzel et al. 2008; Bournaud et al. 2011; Perez et al. 2013). Our analysis provides useful information on the SFH of the galaxy which evolves secularly. However, if the bulge originates from galaxy mergers (e.g. Kauffmann & Haehnelt 2000; Martig et al. 2009), the stellar mass has not been formed in situ which makes the ratio  $\text{SFR}/(M_{\text{bulge}} + M_{\text{disk}})$  difficult to interpret in term of SFH (Abramson et al. 2014). In general, mergers would bring stellar mass created ex-situ, leading to a stellar mass growth. If the SFR is not triggered to a higher value during the merger, it could lead to a growth in mass and then a decrease in the  $s\text{SFR}$  (Peng et al. 2014).

### 8.3. Broadening of the $M_{\star} - \text{SFR}$ relation: star formation stochasticity and diversity in SFHs

As discussed in Sect. 5.2 and as shown in Fig. 7, we find that the intrinsic scatter of the main sequence increases with mass. In particular, the standard deviation found for the most massive galaxies  $11 < \log(M_{\star}) < 11.5$  reaches  $\sigma \sim 0.45$ , which is well above the values commonly found in the literature. In Appendix B, we show that the intrinsic  $s\text{SFR}$  evolution and the criterion used to select star-forming galaxies do not artificially create a broadening of the  $s\text{SFR}$  function with the mass.

The intrinsic scatter of the  $M_{\star} - \text{SFR}$  relation indicates how tightly the instantaneous star formation is determined by the past star formation history of the galaxies. Numerous processes could scatter the relation: the intrinsic scatter of the  $s\text{MIR}$ , galaxy mergers, the variety of the possible SFHs, or the variation of the star formation efficiency within the galaxy itself.

The dynamics of the gas and star content within a galaxy could create SFR variations over million-year timescale. These variations create a natural scatter around the  $M_{\star} - \text{SFR}$  relation (Domínguez et al. 2014). Hopkins et al. (2014) analyze the variability of eight galaxies using hydrodynamical simulations and show that the variability could easily reach 50% for  $M_{\star}^*$  galaxies when considering a timescale of 20 millions years. In particular, SN feedback has an important impact on this rapid variation. These stochastic fluctuations result from variations in the star formation efficiency over short timescales, generated mainly by the local impact of SN feedback. Based on hydrodynamical simulations, Domínguez et al. (2014) show that these fluctuations generate an intrinsic scatter in the  $M_{\star} - \text{SFR}$  relation

reaching 0.5 dex for the dwarf galaxies at  $M_{\star} \sim 10^7 M_{\odot}$  which decreases at 0.2 dex for intermediate mass galaxies at  $M_{\star} \sim 10^{10} M_{\odot}$ . Since our lowest mass range is  $9.5 < \log(M_{\star}) < 10$ , we cannot detect such a decrease of the scatter with the mass. Still, the intrinsic scatter that we measure for our less massive galaxies  $10^{9.5} < M_{\star}/M_{\odot} < 10^{10}$  could be explained by the stochasticity of the star formation.

The intrinsic scatter in the  $M_{\star} - \text{SFR}$  relation induced by the star formation stochasticity in individual galaxies decreases with the stellar mass (Domínguez et al. 2014). Therefore, this process does not explain the increase in  $\sigma$  that we find at  $M_{\star} > 10^{10} M_{\odot}$ . We also do not expect the scatter of the  $s\text{MIR}$  to increase with the halo mass. Indeed, we do not detect an increase in the  $s\text{SFR}$  scatter in the SAM (see Sect. 8.1). Another possibility is that the diversity in the possible SFH increases with the mass. As discussed in Sect. 8.2, numerous processes could affect the SFH and tend to reduce the  $s\text{SFR}$  as the mass increases. Given the variety of these processes, and their possible dependency on the halo mass and on the galaxy morphology (e.g. the growth of a bulge), the impact on the SFH could vary significantly. Therefore, the same processes could be simultaneously responsible for the increasing diversity in the SFHs (i.e., the scatter of the relation) and for the decrease in the  $s\text{SFR}$  with the mass.

Kelson (2014) defines a statistical framework using the central limit theorem to predict the width of the  $M_{\star} - \text{SFR}$  relation. In this paper, the Hurst parameter  $H$  (Kelson 2014, and references therein) determines the behavior of the stochastic fluctuations in the SFR. For  $H = 0$ , there is no stochastic fluctuation. For a value of  $H = 0.5$ , there is no covariance between the stochastic changes in SFR, i.e., the expectation of the SFR at  $t_{i+1}$  has the same value as the SFR at  $t_i$ . Using the central limit theorem, Kelson (2014) predicts a width of 0.3 dex for the  $\log(s\text{SFR})$  distribution when  $H = 0.5$ . For a value of  $H = 1$ , i.e., the stochastic changes in SFR are strongly correlated with previous values (if the SFR decreases at a given timestep, the SFR is more likely to decrease again the following timestep). For a value of  $H = 1$ , Kelson (2014) find that the width of the distribution reaches 0.43 dex. If  $H$  changes with the mass, it could explain why we observe a variation of  $\sigma$  from 0.3 to 0.45 dex between our two extreme considered bins. It implies that stochastic changes in SFR are more correlated as the mass increases, which could be seen as a larger diversity of SFH as the mass increases. Kelson (2014) shows that the difference between the median and the averaged  $s\text{SFR}$  could be used to establish the value of  $H$ . We find that the differences between the median and the average  $s\text{SFR}$  are around 0.1–0.15 dex in the lowest mass bin while it increases at 0.2–0.25 dex in the highest mass bin (see Tables 1 and 2). Therefore, we measure that  $H$  increases with stellar mass.

### 8.4. Interpreting the evolution of the SFR function and infrared luminosity functions

In this section, we convert the  $s\text{SFR}$  functions into SFR functions and we discuss the evolution of the IR luminosity function based on our results. This approach is complementary to Sargent et al. (2012) and Bernhard et al. (2014), who combined the  $\text{GSMF}_{\text{SF}}$  and an universal  $s\text{SFR}$ -distribution based on Rodighiero (2011) to interpret the evolution of the SFR function.

The SFR function in a given mass bin is easily obtained by simply adding the median of  $\log(M_{\star})$  of the considered bin<sup>7</sup> to

<sup>7</sup> 9.75, 10.25, 10.7 and 11.1 in the mass bin  $\log(M_{\star}) = 9.5\text{--}10$ ,  $10\text{--}10.5$ ,  $10.5\text{--}11$  and  $11\text{--}11.5$ , respectively.



the  $sSFR$  function. We sum the SFR functions computed in several stellar mass bins to obtain the total SFR function, as shown with a thin black line in Fig. 14.

Still, our data are limited to  $M_\star > 10^{9.5} M_\odot$  and we need to account for the contribution of the low-mass population when we derive the global SFR function (thick black line in Fig. 14). Therefore, we assume that:

- the density of star-forming galaxies (in log) evolves proportionally to  $-0.4 \log(M_\star)$ , as derived from the  $GSMF_{SF}$  of star-forming galaxies (e.g. Peng et al. 2010; Baldry et al. 2012; Ilbert et al. 2013; Tomczak et al. 2014)<sup>8</sup>;
- the shape of the  $sSFR$  function at  $\log(M_\star) = 9.5-10$  is conserved at lower mass. The width of the main sequence found in our lowest mass bin is similar to the one found in the deepest surveys (e.g. Whitaker et al. 2012);
- our parametrization of the median  $sSFR$  evolution holds at  $M_\star < 10^{9.5} M_\odot$ . With our parametrization,  $\log(sSFR)$  does not depend significantly on  $M_\star$  at  $M_\star < 10^{9.5} M_\odot$ , in agreement with Lee et al. (2015) and Whitaker et al. (2014).

We reconstruct the total SFR functions, as shown with the thick solid lines in Fig. 14.

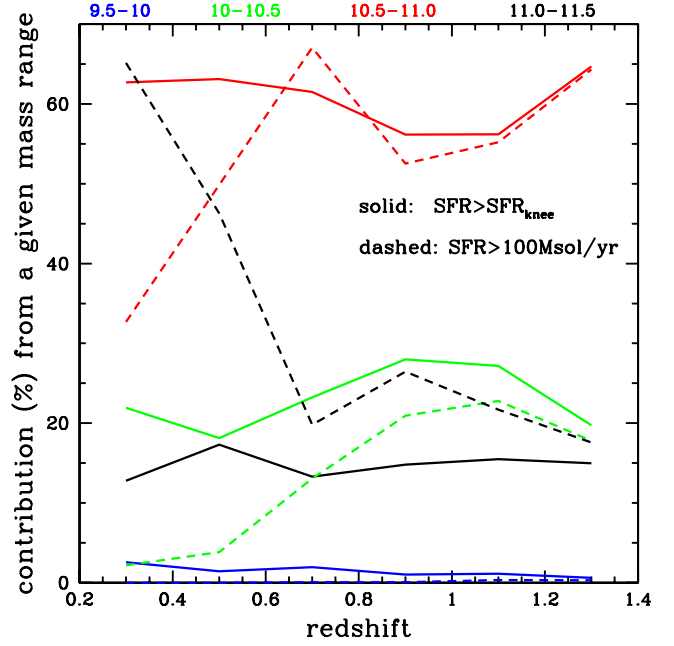
In Fig. 14, we compare our total SFR function with direct measurements from the literature. We convert the IR luminosity functions into SFR functions following Kennicutt (1998). We find an excellent agreement between our SFR functions and the ones derived directly from the IR luminosity functions.

In the remaining part of this section, we use our results on the  $sSFR$  to interpret the behavior of the IR luminosity function discussed in the literature.

The total SFR function could be characterized as the combination of two power laws (e.g. Magnelli et al. 2009), with a change in slope at  $SFR_{knee}$ . Assuming that the slope and the characteristic  $M_\star^*$  of the star-forming  $GSMF_{SF}$  do not evolve with time which is reasonable at  $z < 1.4$  (e.g. Arnouts et al. 2007; Ilbert et al. 2010; Boissier et al. 2010; Peng et al. 2010; Moustakas et al. 2013), the  $SFR_{knee}$  should evolve as the  $sSFR$ . Using the  $sSFR$  evolution in  $3.2(1+z)$  found in Sect. 5.1, we indeed reproduce the position of the knee in Fig. 14 (vertical red thick line at top of each panel). By fitting the evolution of the knee of IR LFs, Le Floc'h et al. (2005), Magnelli et al. (2011, 2013) find a consistent evolution of  $3.2^{+0.7}_{-0.2}(1+z)$ ,  $3.5^{+0.5}_{-0.5}(1+z)$ , and  $3.8^{+0.6}_{-0.6}(1+z)$ , respectively.

Figure 15 shows the contribution of the galaxies of a given stellar mass range to the full star-forming population above a given SFR threshold. If we use  $SFR_{knee}$  as the SFR threshold, we obtain that the contribution of a given stellar mass range remains stationary over the full redshift range (solid lines). Figure 15 also shows that galaxies at  $M_\star > 10^{10} M_\odot$  dominate the SFR function above  $SFR_{knee}$ , while galaxies with  $M_\star < 10^{10} M_\odot$  contribute to less than 5%.

Several studies tried to reconcile the fact that the  $GSMF_{SF}$  is accurately represented by a Schechter function while the IR luminosity function is better represented by a double-exponential (e.g. Sargent et al. 2012). We propose here the following interpretation: the SFR function could be seen as the  $GSMF_{SF}$  convolved with the  $sSFR$  function. The density of star-forming galaxies drops above  $M_\star^*$  in the  $GSMF_{SF}$ , and the contribution



**Fig. 15.** Contribution in % of a given population selected in stellar mass (blue: 9.5–10 dex, green: 10–10.5, red: 10.5–11 and black 11–11.5) to the total SFR function integrated above a given SFR. The dashed lines correspond to a SFR limit of 100  $M_\odot/\text{yr}$  and the solid lines correspond to an evolving SFR limit which is the “knee” of the SFR function.

of  $M_\star > 10^{11} M_\odot$  galaxies stays below 20%. The high star-forming end is dominated by galaxies around  $M_\star^*$ . The SFR of the galaxies around  $M_\star^*$  will be spread following their distribution in  $sSFR$ . Therefore, the shape of the SFR function above  $SFR^*$  is driven by the width of the  $sSFR$  function of  $M_\star^*$  galaxies.

Finally, the faint-end slope of the SFR functions should also be a power-law with the same slope as the star-forming  $GSMF_{SF}$  if the  $sSFR$  does not depend on the mass at  $M_\star < 10^{9.5} M_\odot$  (the term depending on the mass in Eq. (5) becomes negligible). Gruppioni et al. (2013) find a slope of  $-0.2$  and Magnelli et al. (2009) a slope of  $-0.6$  for the IR luminosity functions, while we would expect a value around  $-0.4$  from the  $GSMF_{SF}$  (e.g., Peng et al. 2010; Baldry et al. 2012; Ilbert et al. 2013; Tomczak et al. 2014).

## 9. Conclusions

We characterize the shape and the evolution of the star-forming main sequence by measuring the  $sSFR$  function, i.e., the number density in a comoving volume (in  $\text{Mpc}^{-3}$ ) and per logarithmic bin of  $sSFR$  (in  $\text{dex}^{-1}$ ) of star-forming galaxies. We combine the data from the GOODS and the COSMOS surveys and we derive the  $sSFR$  functions at  $0.2 < z < 1.4$  in four stellar mass bins between  $10^{9.5} M_\odot < M_\star < 10^{11.5} M_\odot$ . We show that the GOODS and the COSMOS surveys do not cover the same area in the  $M_\star$ - $sSFR$  plane, which demonstrates the importance of taking into account selection effects in the study of the main sequence.

We base our analysis on a MIPS  $24 \mu\text{m}$  selected catalogue, adding Herschel data when possible. We estimate the SFR by summing the contribution of the IR and UV light. While our conclusions are based on the  $sSFR_{UV+IR}$  functions, we also measure the  $sSFR$  functions using optically based tracers of the SFR.

<sup>8</sup>  $\alpha = -1.4$  in Peng et al. (2010) for a Schechter function or  $\alpha_2 = -1.5$  for a double-Schechter function in Baldry et al. (2012), Ilbert et al. (2013), Tomczak et al. (2014). When expressed per  $d(\log M_\star)$ , the Schechter function has a slope evolving in  $\alpha + 1$ , which explains why we adopt a factor of  $-0.4$ .



We estimate the  $sSFR$  functions of star-forming galaxies using several non-parametric estimators. We select the star-forming population using the presence of a bimodal distribution in the  $M_{NUV} - M_R/M_R - M_K$  plane and we check that our conclusions are not too sensitive to the exact position of the selection criterion. We fit the non-parametric  $sSFR$  functions by considering two possible profiles: a log-normal function and a double-exponential function. We add a starburst component to the  $sSFR$  function and we also add an additional constraint in the fitting procedure using the  $GSMF_{SF}$ .

Based on our  $sSFR$  functions, we derive the evolution of the median and average  $sSFR$ . We obtain a clear increase in the  $sSFR$  as a function of redshift as  $\propto(1+z)^b$ . Assuming that the  $sSFR$  evolution does not depend on the mass, we find  $b = 3.18 \pm 0.06$ . If we allow  $b$  to depend on the mass, we obtain that the evolution is faster for massive galaxies:  $b$  varies from  $b = 2.88 \pm 0.12$  at  $M_\star = 10^{9.5} M_\odot$  to  $b = 3.78 \pm 0.60$  at  $M_\star = 10^{11.5} M_\odot$ . Our observed evolution of the  $sSFR$  is consistent with the evolution of the  $sMIR_{DM}$  for  $M_\star < 10^{10} M_\odot$  galaxies, but deviates from it at higher masses.

We also compare our results with the predictions of a semi-analytical model from Wang et al. (2008). While the predicted  $sSFR$  functions could be parametrized by a double-exponential profile and matches our results at  $M_\star < 10^{10.5} M_\odot$  reasonably well, we observe that the agreement breaks down for massive galaxies at high  $sSFR$ . The description of the recipes impacting the SFH of massive galaxies should probably be improved in this SAM.

We note that even at  $z < 1$ , it is challenging to constrain the full shape of the  $sSFR$  functions. Dust-free tracers of the SFR do not reach a sufficiently deep SFR limit to sample well below the peak in  $sSFR$ , while tracers based on the optical are prone to large biases because of uncertain dust corrections. Still, we combine all non-parametric estimates of the  $sSFR$  functions at  $z = 0$ . We find that the shape of the  $sSFR$  distribution seems invariant with time at  $z < 1.4$  but depends on the mass. We observe a broadening of the main sequence with  $M_\star$ . Assuming a log-normal distribution, we find that  $\sigma$  does not vary with redshift at  $z < 1.4$ , and increases from 0.28 to 0.46 dex between  $\log(M_\star) = 9.5-10$  and  $\log(M_\star) = 11-11.5$  dex. While the stochasticity of the star formation in individual galaxies could explain the width of the  $sSFR$  function at low mass, it cannot explain an increase in this width with  $M_\star$ . A possibility is that the SFHs become more diverse as the mass increases, as a result of the numerous processes that reduce the star formation in massive galaxies.

We also show that the evolution of the median  $sSFR$  in a logarithmic scale decreases as  $-0.17M_\star$ . We note that the commonly adopted linear relation between  $\log(sSFR)$  and  $\log(M_\star)$  is not suitable for our data. Such a dependency with  $M_\star$  at high mass could be reproduced by assuming exponentially declining SFH with  $\tau$  having an inverse dependency with mass  $\tau \propto 1/M$ . Several processes could reduce the  $sSFR$  as the stellar mass increases. Accretion of cold gas can be suppressed in hot gas halos ( $M_H > 10^{12} M_\odot$ ) leading to gas exhaustion in the central galaxies. This process should occur on longer timescales ( $>3-4$  Gyr) than usually assumed to explain our observed trend. Another possibility is that the efficiency of the star formation is declining toward massive sources: disks are more settled and stabilized against fragmentation as the mass increases. The presence of a bulge could be crucial in reducing the star formation efficiency. Finally, a combined analysis of the  $sSFR$  functions and of the quiescent  $GSMF$  could constrain the relative importance

between secular and quenching processes by setting the quenching timescale with the  $GSMF$  evolution.

**Acknowledgements.** We are grateful to the referee for the careful reading of the manuscript and his/her useful suggestions. We thank Samuel Boissier, Véronique Buat, Andrea Cattaneo, Jared Gabor, Sylvain De La Torre and Mark Sargent for useful discussions. We thank Carlota Gruppioni for providing her data. We gratefully acknowledge the contributions of the entire COSMOS collaboration consisting of more than 100 scientists. The HST COSMOS program was supported through NASA grant HST-GO-09822. More information on the COSMOS survey is available at <http://www.astro.caltech.edu/cosmos>. This paper is based on observations made with ESO Telescopes at the La Silla Paranal Observatory under ESO programme ID 179.A-2005 and on data products produced by TERAPIX and the Cambridge Astronomy Survey Unit on behalf of the UltraVISTA consortium. LMD acknowledges support from the Lyon Institute of Origins under grant ANR-10-LABX-66. A.K. acknowledges support by the Collaborative Research Council 956, sub-project A1, funded by the Deutsche Forschungsgemeinschaft (DFG).

## References

- Abramson, L. E., Kelson, D. D., Dressler, A., et al. 2014, *ApJ*, **785**, L36  
 Arnouts, S., Moscardini, L., Vanzella, E., et al. 2002, *MNRAS*, **329**, 355  
 Arnouts, S., Walcher, C. J., Le Fèvre, O., et al. 2007, *A&A*, **476**, 137  
 Arnouts, S., Le Floc'h, E., Chevillard, J., et al. 2013, *A&A*, **558**, A67  
 Baldry, I. K., Driver, S. P., Loveday, J., et al. 2012, *MNRAS*, **421**, 621  
 Bauer, A. E., Hopkins, A. M., Gunawardhana, M., et al. 2013, *MNRAS*, **434**, 209  
 Behroozi, P. S., Wechsler, R. H., & Conroy, C. 2013, *ApJ*, **770**, 57  
 Bell, E. F., Wolf, C., Meisenheimer, K., et al. 2004, *ApJ*, **608**, 752  
 Bernhard, E., Béthermin, M., Sargent, M., et al. 2014, *MNRAS*, **442**, 509  
 Bertin, E., & Arnouts, S. 1996, *A&AS*, **117**, 393  
 Béthermin, M., Daddi, E., Magdis, G., et al. 2012, *ApJ*, **757**, L23  
 Boissier, S., Buat, V., & Ilbert, O. 2010, *A&A*, **522**, A18  
 Bouché, N., Dekel, A., Genzel, R., et al. 2010, *ApJ*, **718**, 1001  
 Bournaud, F., Elmegreen, B. G., & Elmegreen, D. M. 2007, *ApJ*, **670**, 237  
 Bournaud, F., Chapon, D., Teyssier, R., et al. 2011, *ApJ*, **730**, 4  
 Brammer, G. B., Whitaker, K. E., van Dokkum, P. G., et al. 2011, *ApJ*, **739**, 24  
 Brusa, M., Zamorani, G., Comastri, A., et al. 2007, *ApJS*, **172**, 353  
 Bruzual, G., & Charlot, S. 2003, *MNRAS*, **344**, 1000  
 Calzetti, D., Armus, L., & Bohlin, R. C., et al. 2000, *ApJ*, **533**, 682  
 Capak, P., Abraham, R. G., Ellis, R. S., et al. 2007, *ApJS*, **172**, 284  
 Cattaneo, A., Dekel, A., Devriendt, J., Guiderdoni, B., & Blaizot, J. 2006, *MNRAS*, **370**, 1651  
 Chabrier, G. 2003, *PASP*, **115**, 763  
 Chary, R., & Elbaz, D. 2001, *ApJ*, **556**, 562  
 Comparat, J., Richard, J., Kneib, J. P., et al. 2015, *A&A*, **575**, A40  
 Conroy, C., & Wechsler, R. H. 2009, *ApJ*, **696**, 620  
 Coupon, J., Arnouts, S., van Waerbeke, L., et al. 2015, *MNRAS*, accepted [[arXiv:1502.02867](https://arxiv.org/abs/1502.02867)]  
 Cowie, L. L., Songaila, A., Hu E. M., & Cohen, J. G. 1996, *AJ*, **112**, 839  
 Croton, D. J., Springel, V., White, S. D. M., et al. 2006, *MNRAS*, **365**, 11  
 Daddi, E., Dickinson, M., Morrison, G., et al. 2007, *ApJ*, **670**, 156  
 Dale, D. A., & Helou, G. 2002, *ApJ*, **576**, 159  
 Dekel, A., Birnboim, Y., Engel, G., et al. 2009, *Nature*, **457**, 451  
 De Lucia, G., & Blaizot, J. 2007, *MNRAS*, **375**, 2  
 Dey, A., Soifer, B. T., Desai, V., et al. 2008, *ApJ*, **677**, 943  
 Domínguez, A., Siana, B., Brooks, A. M., et al. 2014 [[arXiv:1408.5788](https://arxiv.org/abs/1408.5788)]  
 Donley, J. L., Koekemoer, A. M., Brusa, M., et al. 2012, *ApJ*, **748**, 142  
 Efstathiou, G., Ellis, R. S., & Peterson, B. A. 1988, *MNRAS*, **232**, 431  
 Elbaz, D., Daddi, E., Le Borgne, D., et al. 2007, *A&A*, **468**, 33  
 Elbaz, D., Hwang, H. S., Magnelli, B., et al. 2010, *A&A*, **518**, L29  
 Elbaz, D., Dickinson, M., Hwang, H. S., et al. 2011, *A&A*, **533**, A119  
 Faber, S. M., Willmer, C. N. A., Wolf, C., et al. 2007, *ApJ*, **665**, 265  
 Förster-Schreiber, N. M., Genzel, R., Newman, S. F., et al. 2014, *ApJ*, **787**, 38  
 Franzetti, P., Scodreggio, M., Garilli, B., et al. 2007, *A&A*, **465**, 711  
 Fritz, A., Scodreggio, M., Ilbert, O., et al. 2014, *A&A*, **563**, A92  
 Genzel, R., Burkert, A., Bouché, N., et al. 2008, *ApJ*, **687**, 59  
 Genzel, R., Förster Schreiber, N. M., Lang, P., et al. 2014, *ApJ*, **785**, 75  
 Gialalisco, M., Ferguson, H. C., Koekemoer, A. M., et al. 2004, *ApJ*, **600**, L93  
 Gruppioni, C., Pozzi, F., Rodighiero, G., et al. 2013, *MNRAS*, **432**, 23  
 Guo, K., Zheng, X. Z., & Fu, H. 2013, *ApJ*, **778**, 23  
 Hayward, C. C., Lanz, L., Ashby, M. L. N., et al. 2014, *MNRAS*, **445**, 1598  
 Heinis, S., Buat, V., Béthermin, M., et al. 2013, *MNRAS*, **429**, 1113  
 Hopkins, P. F., Hernquist, L., Cox, T. J., & Kereš, D. 2008, *ApJS*, **175**, 356  
 Hopkins, P. F., Keres, D., Onorbe, J., et al. 2014, *MNRAS*, **445**, 581

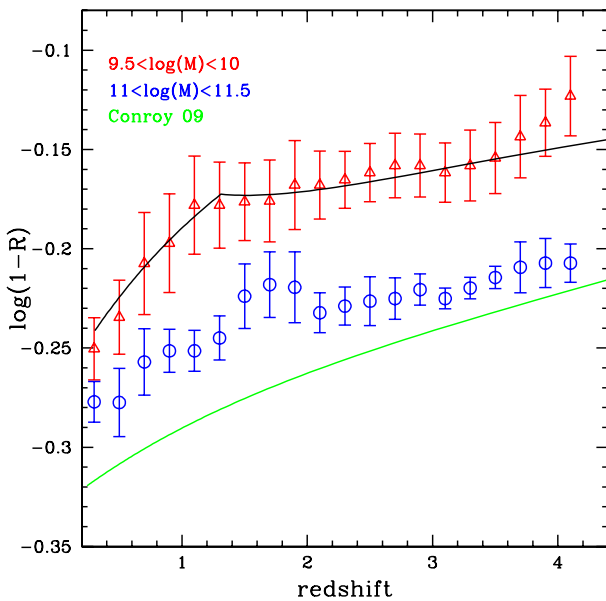
- Ilbert, O., Tresse, L., Arnouts, S., et al. 2004, *MNRAS*, **351**, 541
- Ilbert, O., Tresse, L., Zucca, E., et al. 2005, *A&A*, **439**, 863
- Ilbert, O., Arnouts, S., McCracken, H. J., et al. 2006, *A&A*, **457**, 841
- Ilbert, O., Capak, P., Salvato, M., et al. 2009, *ApJ*, **690**, 1236
- Ilbert, O., Salvato, M., Le Floc'h, E., et al. 2010, *ApJ*, **709**, 644
- Ilbert, O., McCracken, H., Le Fèvre, O., et al. 2013, *A&A*, **556**, A55
- Immeli, A., Samland, M., Gerhard, O., & Westera, P. 2004, *A&A*, **413**, 547
- Kajisawa, M., Ichikawa, T., Yamada, T., et al. 2010, *ApJ*, **723**, 129
- Karim, A., Schinnerer, E., Martínez-Sansigre, A., et al. 2011, *ApJ*, **730**, 61
- Kassin, S. A., Weiner, B. J., Faber, S. M., et al. 2012, *ApJ*, **758**, 106
- Kauffmann, G., & Haehnelt, M. 2000, *MNRAS*, **311**, 576
- Kelson D. D. 2014, *ApJ*, submitted [[arXiv:1406.5191](https://arxiv.org/abs/1406.5191)]
- Kennicutt, R. C. 1998, *ARA&A*, **36**, 189
- Lagache, G., Dole, H., Puget, J.-L., et al. 2004, *ApJS*, **154**, 112
- Lang, P., Wuyts, S., Somerville, R., et al. 2014, *ApJ*, **788**, 11
- Lee, N., Sanders, D. B., Casey, C. M., et al. 2015, *ApJ*, **801**, 80
- Le Fèvre, O., Vettolani, G., Paltani, S., et al. 2004, *A&A*, **428**, 1043
- Le Fèvre, O., Amarin, R., Bardelli, S., et al. 2014, *The Messenger*, **155**, 38
- Le Floc'h, E., Papovich, C., Dole, H., et al. 2005, *ApJ*, **632**, 169
- Le Floc'h, E., Aussel, H., Ilbert, O., et al. 2009, *ApJ*, **703**, 222
- Lynden-Bell, D. 1971, *MNRAS*, **155**, 95
- Lilly, S. J., Le Fèvre, O., Renzini, A., et al. 2007, *ApJS*, **172**, 70
- Lilly, S. J., Carollo, C. M., Pipino, A., Renzini, A., & Peng, Y. 2013, *ApJ*, **772**, 119
- Lutz, D., Poglitsch, A., Altieri, B., et al. 2011, *A&A*, **532**, A90
- Magdis, G. E., Daddi, E., Béthermin, M., et al. 2012, *ApJ*, **760**, 6
- Magnelli, B., Elbaz, D., Chary, R. R., et al. 2009, *A&A*, **496**, 57
- Magnelli, B., Elbaz, D., Chary, R. R., et al. 2011, *A&A*, **528**, A35
- Magnelli, B., Popesso, P., Berta, S., et al. 2013, *A&A*, **553**, A132
- Martig, M., Bournaud, F., Teyssier, R., & Dekel, A. 2009, *ApJ*, **707**, 250
- McCracken, H. J., Milvang-Jensen, B., Dunlop, J., et al. 2012, *A&A*, **544**, A156
- Mignoli, M., Cimatti, A., Zamorani, G., et al. 2005, *A&A*, **437**, 883
- Mitchell, P. D., Lacey, C. G., Baugh, C. M., & Cole, S. 2013, *MNRAS*, **435**, 87
- Moster, B. P., Somerville, R. S., Newman, J. A., & Rix, H. 2011, *ApJ*, **731**, 113
- Moustakas, J., Coil, A., Aird, J., et al. 2013, *ApJ*, **767**, 50
- Muzzin, A., Marchesini, D., Stefanon, M., et al. 2013, *ApJS*, **206**, 8
- Neistein, E., & Dekel, A. 2008, *MNRAS*, **388**, 1792
- Noeske, K. G., Weiner, B. J., Faber, S. M., et al. 2007a, *ApJ*, **660**, L43
- Noeske, K. G., Faber, S. M., Weiner, B. J., et al. 2007b, *ApJ*, **660**, L47
- Oke, J. B. 1974, *ApJS*, **27**, 21
- Oliver, S. J., Bock, J., Altieri, B., et al. 2012, *MNRAS*, **424**, 1614
- Pannella, M., Carilli, C. L., Daddi, E., et al. 2009, *ApJ*, **698**, L116
- Peng, Y. J., Lilly, S. J., Kovač, K., et al. 2010, *ApJ*, **721**, 193
- Peng, Y. J., Lilly, S. J., Renzini, A., & Carollo, M. 2014, *ApJ*, **790**, 95
- Perez, J., Valenzuela, O., Tissera, P. B., & Michel-Dansac, L. 2013, *MNRAS*, **436**, 259
- Renzini, A., & Buzzoni, A. 1986, *Spect. Evol. Galaxies*, **122**, 195
- Rieke, G. H., Alonso-Herrero, A., Weiner, B. J., et al. 2009, *ApJ*, **692**, 556
- Riguccini, L., Le Floc'h, E., Ilbert, O., et al. 2011, *A&A*, **534**, A81
- Rodighiero, G., Vaccari, M., Franceschini, A., et al. 2010, *A&A*, **515**, A8
- Rodighiero, G., Daddi, E., Baronchelli, I., et al. 2011, *ApJ*, **739**, L40
- Rodighiero, G., Renzini, A., Daddi, E., et al. 2014, *MNRAS*, **443**, 19
- Saintonge, A., Tacconi, L. J., Fabello, S., et al. 2012, *ApJ*, **758**, 73
- Salim, S., Rich, R. M., Charlot, S., et al. 2007, *ApJS*, **173**, 267
- Salmi, F., Daddi, E., Elbaz, D., et al. 2012, *ApJ*, **754**, L14
- Sanders, D. B., Salvato, M., Aussel, H., et al. 2007, *ApJS*, **172**, 86
- Sargent, M. T., Béthermin, M., Daddi, E., & Elbaz, D. 2012, *ApJ*, **747**, L31
- Saunders, W., Rowan-Robinson, M., Lawrence, A., et al. 1990, *MNRAS*, **242**, 318
- Schmidt, M. 1968, *ApJ*, **151**, 393
- Scoville, N., Aussel, H., Brusa, M., et al. 2007, *ApJS*, **172**, 1
- Sheth, K., Elmegreen, D. M., Elmegreen, M., et al. 2008, *ApJ*, **675**, 1141
- Smolčić, V., Schinnerer, E., Scodreggio, M., et al. 2008, *ApJS*, **177**, 14
- Snaith, O. N., Haywood, M., Di Matteo, P., et al. 2014, *ApJ*, **781**, L31
- Sparre, M., Hayward, C. C., Springel, V., et al. 2015, *MNRAS*, **447**, 3548
- Speagle, J. S., Steinhardt, C., Capak, P., & Silverman, J. D. 2014, *ApJS*, **214**, 15
- Tomczak, A. R., Quadri, R. F., Tran, K.-V. H. et al. 2014, *ApJ*, **783**, 85
- Utomo, D., Kriek, M., Labbé, I., Conroy, C., & Fumagalli, M. 2014, *ApJ*, **783**, L30
- van Dokkum, P. G., Leja, J., Nelson, E. J., et al. 2013, *ApJ*, **771**, L35
- Wang, J., De Lucia, G., Kitzbichler, M. G., & White, S. D. M. 2008, *MNRAS*, **384**, 1301
- Weinmann, S. M., Neistein, E., & Dekel, A. 2011, *MNRAS*, **417**, 2737
- Whitaker, K. E., van Dokkum, P. G., Brammer, G., & Franx, M. 2012, *ApJ*, **754**, L29
- Whitaker, K. E., Franx, M., Leja, J., et al. 2014, *ApJ*, **795**, 104
- Williams, R. J., Quadri, R. F., Franx, M., et al. 2009, *ApJ*, **691**, 1879
- Wuyts, S., Labbé, I., Schreiber, N. M. F., et al. 2008, *ApJ*, **682**, 985

## Appendix A: Comparison between $sSFR$ and $sMIR_{DM}$ : impact of the mass loss

If the feeding in gas is driven by the growth of the dark matter halos and if the fraction of the infalling gas converted into stars stays constant, we expect that  $SFR/\int_0^t SFR(t')dt' = \dot{M}_H/M_H = sMIR_{DM}$ . However, only a fraction of the mass created stays trapped in an old stellar population. Therefore,  $SFR/\int_0^t SFR(t')dt'$  is different from the  $sSFR$  defined as  $SFR/\int_0^t SFR(t')(1 - R[t - t'])dt'$  with  $R$  the return fraction depending on the age of the stellar populations (Renzini & Buzzoni 1986).

Assuming a constant  $R$  value, we expect  $sSFR' = sMIR_{DM}/(1 - R)$ . For the Chabrier (2003) IMF, the maximum value of  $R$  is 0.5. Therefore, we use this value to define the upper bound of the green area in Figs. 12 and 13.

However,  $R$  depends on time. The value of the stellar mass lost by a given galaxy depends on its SFH. In order to determine the mass lost along the galaxy history, for each galaxy in our sample we measure the difference between the total mass obtained by integrating the SFH (without taking into account the stellar mass loss) and the stellar mass. Then, we measure the median of these differences as a function of redshift. Figure A.1 shows the median stellar mass effectively lost as a function of redshift  $R_{med}(z)$ . The lower bound of the green shaded area in Figs. 12 and 13 corresponds to  $sMIR_{DM}/(1 - R_{med}(z))$  measured for low-mass galaxies. We check that the averaged stellar mass effectively lost in the higher mass bin would be within our two boundaries.



**Fig. A.1.** Open triangles and open circles represent the median  $(1 - R)$  obtained for a low-mass galaxy sample ( $9.5 < \log(M_*) < 10$ ) and high-mass sample ( $11 < \log(M_*) < 11.5$ ), respectively. The green curves correspond to the mass loss parametrized by Conroy & Wechsler (2009) assuming the same redshift of formation  $z = 10$  for all the stars. The black line is the parametrization that we adopt as a lower limit for the return fraction.

We note that the evolution of  $\frac{sMIR_{DM}}{1 - R_{med}(z)}$  is flatter than  $sMIR_{DM}/2$  (i.e., taking  $R$  as a constant), since  $R_{med}(z)$  is smaller at high redshift than at low redshift (stellar populations are younger).

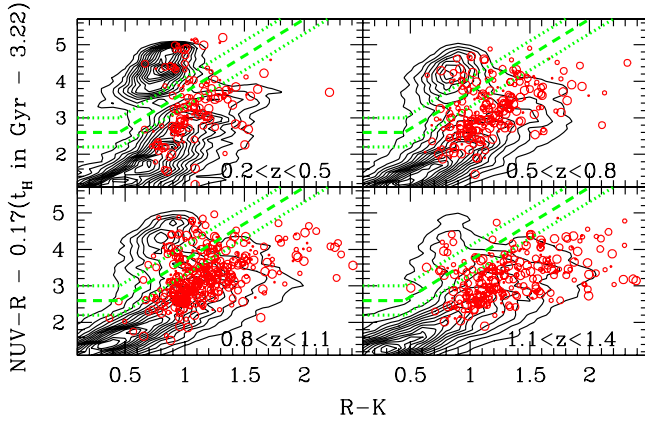
## Appendix B: Additional selection effects linked to the broadening of the $M_*$ – $SFR$ relation

In this appendix, we investigate whether the criterion used to select star-forming galaxies could artificially create a broadening of the  $sSFR$  function with the mass.

We first check that the intrinsic evolution of the  $sSFR$  does not enlarge our estimate of  $\sigma$  significantly (e.g., Speagle et al. 2014). Using a simple model with  $sSFR \propto (1 + z)^{3.8}$  (our extreme value of  $b$ ), we find that the broadening cannot be overestimated by more than 0.02 dex in our redshift bins owing to the  $sSFR$  intrinsic evolution.

Since the rest-frame colors are closely correlated with the  $sSFR$ , one could artificially modify the shape of the  $sSFR$  function depending on the rest-frame color cut used to separate quiescent and star-forming galaxies. In particular, it is unclear if the population that is transitioning from the star-forming to the quiescent population should be included in the analysis, and how it affects the  $sSFR$  function. As shown in Fig. B.1, the most massive galaxies tend to lie much closer to the transitioning area than the other star-forming galaxies. This result is not surprising since Peng et al. (2010) show that the probability of a star-forming galaxy being quenched is proportional to its SFR and mass (their Eq. (17)). In order to investigate the impact of the selection criterion, we move down and up the selection criterion by 0.3 mag which are the extreme values we could adopt (dotted lines in Fig. B.1). We find that this change has no impact on the  $sSFR$  functions of galaxies less massive than  $M_* < 10^{11} M_\odot$  and the value of  $\sigma$  remains above 0.4 dex at  $M_* > 10^{11} M_\odot$ . While the measurements are slightly modified for the most massive galaxies, the overall shape of the  $sSFR$  functions is not affected. Therefore, our conclusions are not sensitive to the adopted limit used to select star-forming galaxies.

We also investigate if the uncertainties associated with the stellar mass could artificially create such broadening of the  $sSFR$  function. Indeed, uncertainties in the stellar mass could move the galaxies from one mass bin to another. Since the  $sSFR$  depends on the mass, it could artificially broaden the  $sSFR$  distribution. The galaxies at  $M_* < 10^{11} M_\odot$  could contaminate the most massive galaxies and artificially add galaxies with a larger  $sSFR$  since the  $sSFR$  decreases with the stellar mass. In order to test this effect, we use the semi-analytical model described in Sect. 7. We add random errors using a Gaussian distribution having a standard deviation of 0.1 dex (already larger than our expected uncertainties) to the predicted SFR and to the predicted mass. We find that the  $sSFR$  functions predicted by the model are almost unmodified. If we adopt uncertainties of 0.2 dex in mass and in SFR, we get unrealistic predictions at all masses. We note that systematic uncertainties are not discussed here since they shift the full distribution.



**Fig. B.1.** Same as Fig. 2, except that the red circles are the massive  $24\,\mu\text{m}$  sources ( $11 < \log(M_*) < 11.5$ ) and the size of the sources is proportional to the  $24\,\mu\text{m}$  flux. The contours refer to the full galaxy sample at  $\log(M_*) > 9.5$ . The largest fraction of massive galaxies are well below the selection criterion and the brightest ones are located in top right part of the diagram with the most extinguished sources.